

SRA

SCHWEITZER RED ANGUS
Annual Bull and Female Sale



FRIDAY, MARCH 17, 2023

1:00 PM | PLEASANT DALE, NE

SCHWEITZER

Red Angus ANNUAL BULL AND FEMALE SALE
 FRIDAY, MARCH 17 / 1:00 PM / PLEASANT DALE, NE

CONTACT US

Austin Schweitzer 402-641-8275

SALE DETAILS

Sale will be Friday, March 17 at Tucker Cattle Company, 2027 A Street Road, Pleasant Dale, Nebraska. Look for signs on the highway. Sale will be rain or shine. From I-80 Milford Exit go South 1 mile to A St Road. Go 2.5 East and you will arrive!

Thursday, March 16th
 5:00 to Dark Animal Viewing
 Friday, March 17th
 9:00 to 1:00 Animal Viewing
 12:00 Lunch
 1:00 Sale Time

SALE SUPPORT

Chris Beutler 402-380-8244
 Matt Lowery 308-750-6119
 Mary Fangmeier, *Accounting* 402-200-9152
 Randy Rasby, *Ring Man - Livestock Plus* 308-539-6195
 Kaci Nelson Toelle, *DV Auction* 308-214-0950

SALE DAY PHONE NUMBERS

Austin Schweitzer 402-641-8275
 Matt Lowery 308-750-6119
 Jay Wolverton, *Veterinarian & Consignor* 402-641-3745
 Pat Kroese 402-741-2452
 Cordell Riley 402-641-9031
 Wade Roth 402-641-7554

ONLINE PARTNER

Find ALL videos and pictures on DV Auction. Real-time bidding available online on day of sale.
This sale will be broadcast live on the internet.



Real time bidding & proxy bidding available.

AUCTION FORMAT

All Stock will be available for view on Sale Day and the night before at Tucker Cattle Company. Bulls will be sold in a format where each lot will be running across the TV Screen in the Sale arena in a normal auction format as well as online at the same time.

SETTLEMENT AND DELIVERY

Bull delivery is available up to 250 miles. However, we will work with anyone on transportation. Sale day pick up is preferred. We will feed the bulls for you at the normal feed yard cost starting April 1. All females must go home on sale day unless other arrangements are made.

GUARANTEE

Mortality insurance will be added on the day of the sale. SRA will pay half of the insurance for anyone who participates. The cost is 6.3% of the value of the bull. With the value of cattle in the present time we highly encourage everyone to take a one-year insurance policy on these bulls. We stand behind every bull on the offering and insurance is the best solution to protect both the buyer and the seller.

HEALTH

Spring turn out: Nasalgen 3 PMH, Bovishield Gold 5, 20/20 Vision 7 w/Spur and Longrange
Pre weaning: Bovishield Gold One Shot, Ivomec pour-on, Nasalgen and Ivomec
On Feed: Pyramid 5 + Presponse and Cleanup pour-on twice
Pre-sale: Ivomec pour-on and Rumin Magnet

EPDS

All EPDs are current on the purebred animals as of February 15, 2023 from the Red Angus association. Refer to page four to give you the details and meaning of each EPD. If you need any other additional information on a bull do not hesitate to ask.

ULTRASOUND INFORMATION

All bulls have been scanned and information will be available sale day.

INSURANCE

Insurance will be available sale day through Dakota AG Insurance, Jared Mohnen 605-999-4475. Schweitzer Red Angus will pay 50% of the annual premium for buyers who wish to better protect themselves with a full 365 day mortality policy. See Jared or a clerk at the checkout for more details.

SEMEN INTEREST

SRA will reserve the right to retain 50% revenue sharing semen interest in all bulls selling. The purchaser of the bulls will have full possession and full salvage value.

FERTILITY TESTING

All bulls tested for breeding soundness by Jay Wolverton of Seward Animal Hospital.

SIGHT-UNSEEN GUARANTEE

If you are unable to make the sale, contact Austin prior to the sale. Give him your bull needs and budget and he will purchase a bull for any customer. If you are not satisfied with the bull it can be 100% returned.

Welcome

On behalf of my entire family and my team, we want to thank you for your interest in our program. This marks our seventh production sale and for those of you that have been with us for a while this set of bulls trumps anything we have offered in the past. There are 74 bulls on the offering only seven of these bulls are naturally bred the rest are Artificial Insemination or Embryo Transfer calves. This effort in our breeding program has improved our herd to benefit yours!

To be transparent we left over 30 bulls off this sale so you can be confident from Lot 1 to Lot 74 on this sale that you are getting a bull that will improve your herd. We feel we have a set of next-level bulls to influence your herd in the right direction. We also have a great set of open heifers available this year for our customers.

The market is hot! Now is the time to invest in your herd in any way you can from herd sires to any input you can implement to maximize your calf crop in the terms of calves produced and pounds sold. Kill cows are down 13% from 2021 and cow inventory is almost at an all-time low. You don't have to be an economist to see where this market is heading in the short term. We are killing fat cattle and bringing home checks for \$2,400-\$2,700 a hd.

Many of us are in the cattle business for several reasons. This year may be the year we can check the box that we are in the cattle business to get a good return on our investment!

For myself in terms of a career in order of importance, my cow herd comes first as we work to become one of the leaders in seedstock production in the Red Angus breed. Secondly, my team and I manage a feed yard which allows us to see the finished product of cattle every month. To be transparent I have some concerns about the Red Angus breed when it comes to finished Red Angus cattle.

Many people carry the same opinion that our focus on low birth weight with Red Angus has well "got out of control." What I mean by that is there has been so much focus on birth weight that we are giving up frame size and pounds on the rail. Now by all means, if you only raise and sell bred heifers get in there and get yourself a sleep all-night heifer bull to give your heifers a chance to start their life. However, if you're not in the heifer business and breed cows make sure the performance traits are the first thing you look at not the birth weight EPDs.

A great solution for my topic above is in our lineup this year, grab a bull that carries top growth traits along with a birth weight you are comfortable with. This allows you to keep the peace of mind for calving ease while not giving up pounds. A heifer bull with growth traits in the bottom 20% of the breed is no doubt going to be smaller calves at weaning. My example this year is my HXC Declaration sired calves. (That sire is top 2% in the breed for all gaining traits.) The calves are 100-150 lbs. heavier than the herd average. This holds true for heifer calves and bulls. I know a lot of you are like me and how the animal is visually, phenotypically, and how they move is your first decision-maker. Let the EPD's point out the curve benders we have on the offering today that best fit your needs. Those numbers do not lie and that's why we seedstock nerds spend hours in front of a computer.

We hope you can make it to our venue this year and enjoy it. We have a great lineup of bulls, heifers, and some great cows that fell out of our calving window only due to a bull issue. Have a prosperous and successful 2023. May the cattle be with you!



Regards, Austin

Austin J Schweitzer
Schweitzer Red Angus
402-641-8275
schweitzerredangus@gmail.com

Consignors

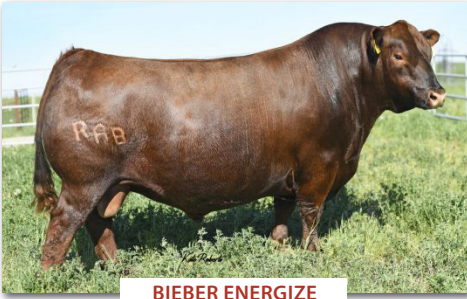
KAW Red Angus
Selling Lots: 5, 39,
40, 56, 57, 53 & 54
Galen Roebke
Selling Lots: 6, 33 & 48

Thank you to our Partners and Sponsors

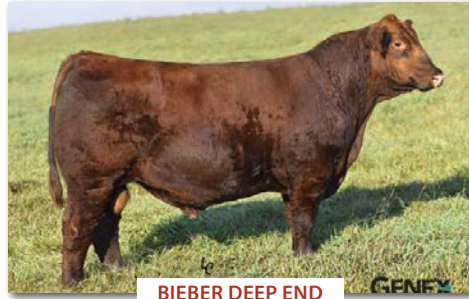
Craig Lundstrom – Partnership Herd at Cedar Bluffs Ranch
WKK Cattle - Partnership Herd, Milford NE
Jeff Borgmann Family – SRA backgrounding and Embryo Partners
Russ, Nick, and Brandon Kovar – Embryo Partnership Cooperator
Wehrs Feed Yard – Bull and heifer development
Seward Animal Hospital – Animal Health
Kyle Vanderpol – Midwest PMS Nutritionist
KAW Red Angus – Seward NE
Brad and Vicki Tucker/ Tucker Cattle Company-
Sale Host and SRA Heifer Development

REFERENCE

Sires



BIEBER ENERGIZE



BIEBER DEEP END



WFL PROFIT MAKER



DUFF RED BEAR



DUFF RED BLOOD



REDEMPTION



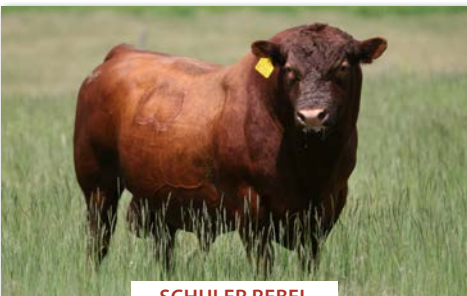
KAW RAGNAR



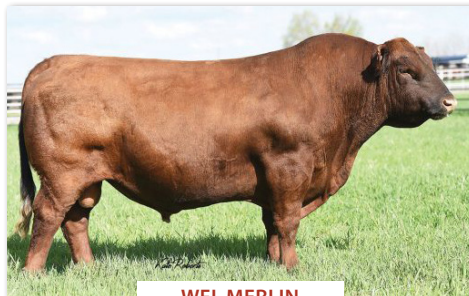
REDS SENECA



BIEBER ROLLING DEEP



SCHULER REBEL



WFL MERLIN



WEBR SHAMELESS

And More!

RED ANGUS GUIDE TO EPDS

ProS - An all-purpose index that covers economically relevant traits across all aspects of the beef supply chain from conception to carcass.

HerdBuilder (HB) - Need bulls for developing a profitable cowherd and maximizing the value of marketed progeny? Select a bull with a high HB value.

Producers selecting bulls to develop profitable replacement females and maximize the value of non-replacement marketed progeny should incorporate the HerdBuilder Index into their selection decisions.

The HerdBuilder Index is built using the following scenario:

- Red Angus bulls mated to cows and heifers
- Replacement heifers retained from within the herd
- All remaining progeny sold on a quality-based carcass grid

Given that replacement heifers are retained, significant influence is placed on the obvious maternal ERTs of Stayability, Heifer Pregnancy and Calving Ease. Additionally, with all remaining progeny sold on a quality-based carcass grid, Marbling, Yield Grade and growth EPDs also impact the HerdBuilder Index.

GridMaster Index (GM) - If you market all of your calf crop and want to increase the value of that calf crop, select a bull with a high GM value to maximize your profit.

Use the Gridmaster Index if your operation's primary goal is maximizing profitability of feeders in the feed yard and on the rail. The Gridmaster Index is built using the following scenario:

- Red Angus bulls mated to cows
- All progeny sold on a quality-based carcass grid

Marbling, Yield Grade and growth EPDs are the traits of primary importance in the GridMaster Index.

Calving Ease Direct (CED) - Breeding Heifers? Select bulls with a high CED to increase the probability that the heifers will calve unassisted.

Birth Weight (BW) - Predicts differences in birth weight. BW is included in the CED EPD, so simplify your decisions by selecting bulls based on CED instead of BW.

Weaning Weight (WW) and Yearling Weight (YW) - Predicts differences in weight at weaning and yearling. While selection based on these growth measures can increase your payweight, be cautious what the bull's other EPDs are.

Milk - Predicts differences in weaning weight in daughters progeny due to milk production.

Maintenance Energy (ME) - Selecting bulls with a lower ME EPD will decrease the amount of feed his daughters will require to maintain body weight.

Heifer Pregnancy (HPG) - Retaining heifers? Select bulls with a high HPG to increase the percentage of exposures that result in a calving observation.

Calving Ease Maternal (CEM) - Another number to pay attention to if you are retaining heifers. Selecting bulls with a high CEM will increase the probability of those daughters calving unassisted.

Stayability (STAY) - The most important trait if your goal is developing cows that stay productive, thus increasing your profitability. Bulls that have a high Stay EPD are expected to sire daughters that remain productive in the herd until at least 6 years of age.

Marbling Score (Marb) - Select bulls with high Marb EPD to increase the number of progeny that grade Choice or Prime.

Yield Grade (YG) - Marketing calves on a grid? Placing selection pressure on YG EPD will decrease the number of YG discounts on grid-marketed progeny.

Carcass Weight (CW) - Selecting bulls with a high CW EPD will increase the weight of the hanging carcass, which directly impacts revenue.

Rib Eye Area (REA) - Need to add muscle? Select bulls with a high REA EPD to increase rib eye area, which favorably increases Yield Grade.

Backfat (Fat) - Need to reduce waste in carcasses? Select bulls with a low Fat EPD to reduce backfat, which favorably increases Yield Grade.

EPD AVERAGES & RANGES (FALL 2022)

	ProS	HB	GM	CED	BW	WW	YW	ADG	DMI	MILK	ME	HPG	CEM	STAY	MARB	YG	CW	REA	FAT
Min.	-154	-152	-98	-4	-12.9	-15	-43	-0.17	-1.11	-1	-35	-5	-9	-2	-0.59	-1.05	-71	-1.13	-0.22
Avg.	91	54	37	13	-1.8	62	100	0.23	1.46	25	3	11	7	15	0.42	0.06	24	0.14	0.02
Max.	266	141	185	25	9.7	123	209	0.54	3.60	44	37	23	19	27	1.90	0.45	109	1.93	0.11

WHICH BULLS ARE GOOD FOR HEIFERS?

EPD	Recommended for Hfs	Acceptable For Hfs	Not for Heifers	BREED AVG
CE Calving Ease	greater than 10	10-12	less than 10	-1.10
BW Birth Weight	less than 1	1-2.5	2.5 or higher	0.12

RED ANGUS *Bulls*



1

SRA ENERGIZED UP 150K

GGP

REG: 4609429 DOB: 01/26/22 TAT: 150K BREED: 100% AR

BIEBER CL ATOMIC C218
BIEBER CL ENERGIZE F121
 BIEBER CL ADELLE 575D

ANDRAS FUSION R236
 BIEBER DATELINE 308Y
 BIEBER HARD DRIVE Y120
 BIEBER ADELLE 297Y
 REDHILL TEN X 104U 190A
 BROWN MS NEW STANDARD A7053
 RED LAZY MC SERGEANT 97Z
 SRR JOAN 8017

ACT BW
83 lbs.
 ADJ WW
628 lbs.
 ADJ YW
1222 lbs.

LSF MEW X-PORTER 6695D
LSF SRR JOAN B4359 F8150
 LSF SRR JOAN B4359

ProS	HB	GM	CED	BW	WW	YW	ADG	MILK	ME	HPG	CEM	STAY	MARB	YG	CW	REA	FAT
82	28	53	13	-2.6	67	109	.27	30	9	10	9	11	.52	.03	30	.44	.03
50%	88%	13%	44%	37%	25%	17%	12%	19%	83%	68%	18%	86%	27%	36%	15%	5%	80%

What a great bull to start off our sale. This Energize son made his presence known early this spring with several people admiring his phenotypic structure and ease in stride. He checks ALL the boxes from a -2.6 on BW to a top 20-30% in growth, performance, and carcass traits. A bull with versatility is ready to go into a powerful commercial cowherd or purebred operation. *Retaining 50% semen interest.*



Lot 1 as a calf - July 2022



Lot 2

2 SRA NEW LEVEL ENERGIZE 147K  **GGP**
 REG: 4609427 DOB: 01/25/22 TAT: 147K BREED: 100% AR

BIEBER CL ENERGIZE F121
 BIEBER CL ATOMIC C218
 BIEBER CL ADELLE 575D
 ACT BW 78 lbs.
 ADJ WW 686 lbs.
 ADJ YW 1221 lbs.

LSF SRR BLKBIRD C5209 F8147
 LSF MEW PLATINUM 5660C
 LSF SRR BLACKBIRD C5209
 ANDRAS FUSION R236
 BIEBER DATELINE 308Y
 BIEBER HARD DRIVE Y120
 BIEBER ADELLE 297Y
 BROWN INCREDABULL Z7277
 BROWN MS NEW STANDARD A7053
 LSF SRR TYSON 3025A
 LSF BLACKBIRD U8902 Y1046

ProS	HB	GM	CED	BW	WW	YW	ADG	MILK	ME	HPG	CEM	STAY	MARB	YG	CW	REA	FAT
70	3	67	11	-1.1	81	139	.36	29	17	10	7	9	.56	.05	40	.49	.03
57%	98%	3%	74%	67%	2%	1%	1%	20%	99%	77%	48%	93%	19%	44%	3%	3%	80%

Another standout sired by Bieber Energize out of an HXC Declaration daughter. A sure-shot heifer bull with a -5.0 BW, yet he bends the curve from birth to yearling weight. This bull is long-sided, deep-bodied and athletic. You can take these four Energize sons and place them in any order pending your preference! 265K shows the strongest advantage of the Energize sons on heifers. **Retaining 50% semen interest.**



BIEBER CL ENERGIZE F121 - Sire of Lots 1 & 2



3 SRA ENERGIZE LION 265K GGP

REG: 4609441 DOB: 01/21/22 TAT: 265K BREED: 100% AR

BIEBER CL ATOMIC C218
BIEBER CL ENERGIZE F121
 BIEBER CL ADELLE 575D

HXC DECLARATION 5504C
LSF SRR PRINCESS A3049 F8265
 LSF SRR PRINCESS 907 A3049

ANDRAS FUSION R236
 BIEBER DATELINE 308Y
 BIEBER HARD DRIVE Y120
 BIEBER ADELLE 297Y

LEACHMAN PLEDGE A282Z
 HXC190Y
 LSF RAB PINNACLE X7756
 6R PRINCESS 907

ACT BW 65 lbs.
 ADJ WW 538 lbs.
 ADJ YW 1102 lbs.

ProS	HB	GM	CED	BW	WW	YW	ADG	MILK	ME	HPG	CEM	STAY	MARB	YG	CW	REA	FAT
86	38	48	16	-5.0	57	99	.26	21	8	11	9	13	.63	.14	17	-.09	.03
42%	75%	19%	8%	8%	61%	38%	15%	93%	77%	56%	9%	73%	13%	87%	62%	86%	76%

This Energize son on the offering could arguably be the best. He is at the breed average on BW with a -1.1. He sets astounding numbers in the top 1% of the entire breed in YW, ADG, and the top 2% in WW. His mother is top 1% in ADG, YW, WW, and Carcass Weight. The bull will be a herd sire and will vastly improve your scale weights next fall. **Retaining 50% semen interest.**



4 SRA ENERGIZE CHEETAH 145K GGP

REG: 4609425 DOB: 01/24/22 TAT: 145K BREED: 100% AR

BIEBER CL ATOMIC C218
BIEBER CL ENERGIZE F121
 BIEBER CL ADELLE 575D

5L DEFENDER 560-30Z
LSF SRR BLKBIRD C5124 F8145
 LSF SRR BLACKBIRD C5124

ANDRAS FUSION R236
 BIEBER DATELINE 308Y
 BIEBER HARD DRIVE Y120
 BIEBER ADELLE 297Y

5L ADVOCATE 817-14W
 5L BLACK ADINA 525-560
 BROWN PARAMOUNT X7879
 LSF SRR BLACKBIRD A3043

ACT BW 72 lbs.
 ADJ WW 633 lbs.
 ADJ YW 1177 lbs.

ProS	HB	GM	CED	BW	WW	YW	ADG	MILK	ME	HPG	CEM	STAY	MARB	YG	CW	REA	FAT
88	35	53	15	-4.1	66	110	.28	27	8	10	7	14	.60	.01	26	.33	.02
37%	77%	13%	19%	15%	28%	16%	8%	50%	79%	79%	57%	56%	15%	19%	28%	12%	37%

This bull represents the full package. He is an obvious stand-out heifer bull and still is in the top 25% in all the traits you want to focus on for growth. His mother is a 5L Defender daughter, which is known for producing high-quality cows. This bull also checks boxes if you are planning on retaining heifers with an HPG in the top 15%. **Retaining 50% semen interest.**



5 KAW RB WEIGH STATION 263 ET GGP

REG: 4599913 DOB: 03/18/22 TAT: 263 BREED: 100% AR

ROJAS RIOJA 6052
DUFF RED BLOOD 18114
 DUFF JUANADA 927K 15124

WEBR MAXED OUT 627
SRA J34
 RED SIX MILE BAYBERRY 439B

PZC TMAS FIRESTORM 1800 ET
 SIX MILE LAKOTA 112Y
 RED CROWFOOT OLE'S OSCAR
 O C C JUANADA 927K

BIEBER ROLLIN DEEP Y118
 MISS BHR COPPER D 946
 L83 SUPER DUTY 244Z
 SIX MILE BAYBERRY 15Z

ACT BW 68 lbs.
 ADJ WW 699 lbs.
 ADJ YW 1212 lbs.

ProS	HB	GM	CED	BW	WW	YW	ADG	MILK	ME	HPG	CEM	STAY	MARB	YG	CW	REA	FAT
80	48	33	15	-2.6	63	95	.20	29	6	13	7	14	.52	.04	21	.18	.02
70%	66%	60%	22%	34%	41%	55%	69%	22%	70%	20%	54%	65%	27%	34%	58%	39%	47%

The lead Duff Red Blood son in the pen this March born front pasture herd sire was our pick to show as a calf. With calving ease and balanced EPD's his phenotype type dominates. Deep hipped, deep sided, with front end extension in a strong foundation in a dark red package. Docility deluxe. His dam was the top SRA show heifer on 2019. Recommended for heifers and cows. KAW is retaining 50% semen interest.

Consigned by KAW Red Angus



6 GWR SRA RED BLOOD 209 GGP

REG: 4642445 DOB: 02/16/22 TAT: 209 BREED: 99.9% AR 0.1% XX

ROJAS RIOJA 6052
DUFF RED BLOOD 18114
 DUFF JUANADA 927K 15124

BROWN JYJ REDEMPTION Y1334
GWR LANA 902
 GWR LANA 706

PZC TMAS FIRESTORM 1800 ET
 SIX MILE LAKOTA 112Y
 RED CROWFOOT OLE'S OSCAR
 O C C JUANADA 927K

BECKTON NEBULA P P707
 JYJ MS JOLENE W16
 ANDRAS NEW DIRECTION R240
 GWR LANA 403

ACT BW 70 lbs.
 ADJ WW 638 lbs.
 ADJ YW 1236 lbs.

ProS	HB	GM	CED	BW	WW	YW	ADG	MILK	ME	HPG	CEM	STAY	MARB	YG	CW	REA	FAT
101	60	41	17	-3.9	54	86	.20	27	0	14	7	16	.58	.02	14	.02	.00
36%	34%	49%	5%	14%	68%	72%	75%	33%	35%	15%	46%	39%	15%	33%	83%	78%	22%

This big stout athletic bull starts with calving ease and is outperforming the expectations of his EPDs. Out of a young Redemption daughter he carries the power and muscle of Duff Red Blood. Recommended for heifer and cows.

Consigned by GWR Red Angus

7 SRA RED BEAR 3155K



REG: 4615041 DOB: 01/29/22 TAT: 3155K BREED: 100% AR

MANN RED BOX 55C
DUFF RED BEAR 18154
 RED CC PANTERA 20A

SLGN WIDELOAD 920W
 PELTON MISS AJA 0839U
 STEWART PANTHER 19X
 RED CCY SAVANNAH 5U
 RED HILL B571 JULIAN 84S
 BUF CRK TAWN U241
 SRR TRIPLE CROWN 400
 HLH DAISY 708 901

ACT BW
89 lbs.
 ADJ WW
734 lbs.
 ADJ YW
1294 lbs.

BUF CRK JUBILATION X019
HLH MS JUBILATION 6131 3155
 HLH TEE ARA 901 6131

ProS	HB	GM	CED	BW	WW	YW	ADG	MILK	ME	HPG	CEM	STAY	MARB	YG	CW	REA	FAT
69	51	18	12	-0.6	71	111	.25	24	10	11	7	15	.25	.06	24	.07	.01
25%	34%	33%	59%	49%	17%	16%	18%	54%	73%	35%	67%	28%	33%	74%	27%	70%	41%

This bull is sired by Duff Red Bear with great performance and frame. I have grown to have a lot of respect for the Duff program with bulls like this one. His mother is a Buffalo Creek Jubilation that is 10 years old. With great EPDs, he will pay for himself in a hurry come spring. His YW tops 1,300 lbs. and his progeny will follow close to that path. He is a stand-out bull! **Retaining 50% semen interest.**



Lot 7 as a calf



LOT 7

8 SRA RED BEAR 654K



REG: 4615063 DOB: 02/13/22 TAT: 654K BREED: 100% AR

ROJAS RIOJA 6052
DUFF RED BLOOD 18114
 DUFF JUANADA 927K 15124

PZC TMAS FIRESTORM 1800 ET
 SIX MILE LAKOTA 112Y
 RED CROWFOOT OLE'S OSCAR
 O C C JUANADA 927K
 ANDRAS IN FOCUS B152
 ANDRAS KURUBA B111
 FORSTER HOBO X001
 TBS MS CANYON 62

ACT BW
80 lbs.
 ADJ WW
674 lbs.
 ADJ YW
1167 lbs.

ANDRAS NEW DIRECTION R240
TBS NEW HOBI 654
 TBS MS HOBO CANYON 409

ProS	HB	GM	CED	BW	WW	YW	ADG	MILK	ME	HPG	CEM	STAY	MARB	YG	CW	REA	FAT
100	59	41	16	-2.8	64	99	.22	25	1	14	7	15	.50	.02	24	.17	.01
38%	39%	46%	9%	31%	32%	46%	63%	51%	37%	12%	46%	55%	27%	35%	47%	46%	29%

This super balanced Duff Red Blood is out of an Andras New Direction daughter. This Red Blood son is another great choice to use on heifers. This Cow has been a standout for us from day one. You need to get your own visual on the guy!



Lot 8 as a calf



LOT 8

9 SRA PIE QB MAHOMES 095K



REG: 4609421 DOB: 02/13/22 TAT: 095K BREED: 100% AR

PIE STOCKMAN 4051
PIE QUARTERBACK 789
 PIE RUBY 520

LSF SAGA 1040Y
 PIE LAKOTA 046
 PIE ONE OF A KIND 352
 PIE RUBY 381
 5L ADVANTAGE 3267-221Y
 5L ROXIE 854-117
 LSF SRR IRON ORE 364
 SRR SALLY 8020-43H

ACT BW
76 lbs.
 ADJ WW
567 lbs.
 ADJ YW
1241 lbs.

5L BOURNE 117-48A
LSF SRR SALLY C5355 F8095
 LSF SRR SALLY C5355

ProS	HB	GM	CED	BW	WW	YW	ADG	MILK	ME	HPG	CEM	STAY	MARB	YG	CW	REA	FAT
118	58	60	16	-5.1	63	107	.27	32	9	14	8	16	.65	-.03	23	.33	.01
13%	40%	13%	9%	6%	39%	28%	19%	43%	85%	11%	12%	51%	12%	11%	49%	14%	26%

A well-balanced Pie Quarterback son. As many of you know this semen is almost obsolete. So here is a chance to own a herd sire by one of the better Pieper bulls in recent years. A full-on heifer bull with balanced numbers for growth. His dam is a 5L Bourne daughter, which only adds to how impressive this pedigree is. Don't sleep on this one! He is a little younger, but I think he may be one of the best bulls on the offering. **Retaining 50% semen interest.**



LOT 9



10 SRA RED BLOOD 6115K

GGP

REG: 4615045 DOB: 01/31/22 TAT: 6115K BREED: 100% AR

ROJAS RIOJA 6052
DUFF RED BLOOD 18114
 DUFF JUANADA 927K 15124

BECKTON EPIC R397 K
TBS EPIC SAKIC 6115
 TBS SAKIC 9100

PZC TMAS FIRESTORM 1800 ET
 SIX MILE LAKOTA 112Y
 RED CROWFOOT OLE'S OSCAR
 O C C JUANADA 927K
 BECKTON EPIC K F075
 BECKTON KIT F468 JL
 RED SIX MILE SAKIC 832S
 TBS MS CO SENSATION 799

ACT BW
84 lbs.
ADJ WW
675 lbs.
ADJ YW
1207 lbs.

ProS	HB	GM	CED	BW	WW	YW	ADG	MILK	ME	HPG	CEM	STAY	MARB	YG	CW	REA	FAT
101	61	39	13	-1.7	59	94	.22	29	5	14	6	17	.44	.01	19	.16	.01
64%	39%	77%	85%	65%	27%	21%	16%	56%	83%	28%	77%	25%	96%	93%	16%	25%	98%

As we get back into the Red Bloods here is a well-balanced bull out of a Beckton Epic dam. His mother is the best-producing cow we have when it comes to growth and adding pounds. This is her third bull in a row and in the last two out of three years, her bull was the highest weight on the bull test. She has been flushed and her calves on the ground this year out of Energize will be at the top of the sale next year. A very well balanced set of numbers with moderate calving ease!



11 SRA RED BLOOD 453K

GGP

REG: 4614975 DOB: 01/01/22 TAT: 453K BREED: 100% AR

ROJAS RIOJA 6052
DUFF RED BLOOD 18114
 DUFF JUANADA 927K 15124

FCCO EASY MONEY 901
KAW EASY ANNIE O 453
 KAW CC LANAS CUT 2141

PZC TMAS FIRESTORM 1800 ET
 SIX MILE LAKOTA 112Y
 RED CROWFOOT OLE'S OSCAR
 O C C JUANADA 927K
 BIBBER MAKIN HAY 9913
 MISS GOLDRUSH J200
 RED LAZY MC COWBOY CUT 26U
 JAG LANA 516R

ACT BW
70 lbs.
ADJ WW
607 lbs.
ADJ YW
1177 lbs.

ProS	HB	GM	CED	BW	WW	YW	ADG	MILK	ME	HPG	CEM	STAY	MARB	YG	CW	REA	FAT
81	53	27	17	-4.3	52	77	.16	28	1	12	9	14	.39	-.02	19	.14	-.01
72%	48%	78%	4%	10%	75%	85%	91%	30%	40%	33%	14%	61%	52%	17%	68%	56%	8%

This Red blood was bred to be a heifer bull. While he has more frame than some of the other Red Bloods offered; there is no doubt he offers a sleep-all-night heifer bull solution. Top 5% CED, top 10% BW, and an actual BW of 70 lbs. His mother is a top 10 producer in our herd, and we have retained 3 of her daughters.



12 SRA RED BLOOD 6148K

GGP

REG: 4615013 DOB: 01/18/22 TAT: 6148K BREED: 100% AR

ROJAS RIOJA 6052
DUFF RED BLOOD 18114
 DUFF JUANADA 927K 15124

BHR CODE RED 2143
TBS CODE RED 6148
 MBAR HEAVENS HONEY 131

PZC TMAS FIRESTORM 1800 ET
 SIX MILE LAKOTA 112Y
 RED CROWFOOT OLE'S OSCAR
 O C C JUANADA 927K
 PIE CODE RED 9058
 MISS BHR PRINCESS 53
 LEACHMAN HEAVENLY 1517C
 LLOYD HONEY'S MILL 08R

ACT BW
77 lbs.
ADJ WW
568 lbs.
ADJ YW
1073 lbs.

ProS	HB	GM	CED	BW	WW	YW	ADG	MILK	ME	HPG	CEM	STAY	MARB	YG	CW	REA	FAT
90	63	28	15	-2.5	52	77	.15	27	2	13	7	16	.47	.00	13	.01	-.01
52%	27%	77%	16%	37%	73%	85%	92%	33%	41%	17%	50%	29%	33%	25%	86%	83%	11%

Another Red Blood heifer bull option. His grandmother goes back to Pieper Code Red who had a short life, but some great impact on the breed. Loose-hided, soft, and sound bull that will work for a lot of pedigrees. Suitable for heifers.



13 WKK SRA FUSION 489K GGP

REG: 4615125 DOB: 01/22/22 TAT: 489K BREED: 100% AR

ANDRAS IN FOCUS B175	MYTTY IN FOCUS	ACT BW
ANDRAS FUSION R236	DI ESTONIA 316	89 lbs.
ANDRAS BELLE B167	ANDRAS THUNDER B105	ADJ WW
	ANDRAS BELLE 416	684 lbs.
BIEBER LET'S ROLL B563	BIEBER ROLLIN DEEP Y118	ADJ YW
BIEBER CHINOOK 489F	BASIN PRIMROSE 2043	1156 lbs.
BIEBER CHINOOK 158Y	MESSMER PACKER S008	
	BASIN CHINOOK W043	

ProS	HB	GM	CED	BW	WW	YW	ADG	MILK	ME	HPG	CEM	STAY	MARB	YG	CW	REA	FAT
112	68	44	11	-1.4	58	95	.23	24	5	10	7	18	.59	.09	20	.04	.02
44%	17%	79%	90%	80%	40%	52%	64%	64%	68%	9%	82%	14%	57%	27%	72%	39%	48%

This Bieber Lets Roll daughter has produced great bulls for us since we have had her. A Fusion son that has a well-balanced pedigree that needs to be run on as many cows as possible. His depth of rib and visual presence may be the best on this sale offering. With Andras Fusion on the top and Bieber Lets Roll on the bottom, I'm not sure it gets much better. His mother will be flushed this upcoming breeding season. Another bull that is a jaw dropper in person.



14 SRA FUSION 1329K ET GGP

REG: 4603585 DOB: 01/14/22 TAT: 1329K BREED: 100% AR

ANDRAS IN FOCUS B175	MYTTY IN FOCUS	ACT BW
ANDRAS FUSION R236	DI ESTONIA 316	67 lbs.
ANDRAS BELLE B167	ANDRAS THUNDER B105	ADJ WW
	ANDRAS BELLE 416	502 lbs.
BROWN JYJ REDEMPTION Y1334	BECKTON NEBULA P P707	ADJ YW
SRA 3510	JYJ MS JOLENE W16	1081 lbs.
YCRA GOLDBAR A38	OLC YOD CHATO S230	
	YCRA GOLDBAR G8	

ProS	HB	GM	CED	BW	WW	YW	ADG	MILK	ME	HPG	CEM	STAY	MARB	YG	CW	REA	FAT
113	58	55	14	-3.2	51	90	.24	24	1	8	9	16	.61	.12	21	-.14	.01
15%	35%	17%	34%	23%	79%	64%	40%	62%	37%	94%	21%	28%	13%	76%	58%	94%	29%

Lots 14 and 15 are a pair of ET brothers that are outstanding heifer bulls. A full brother to this mating was Lot 2 in our 2021 sale and was our second highest-selling bull. We repeated this mating for that reason after seeing him a year later. Another round of Andras Fusion on the top side with good old Brown JYJ REDEMPTION on the bottom. Another pedigree that should make the Red Angus Hall of Fame. There are some differences between these two bulls but make sure and note the age difference between them. Another set of bulls that will work on heifers.



15 SRA ET FUSION 22K ET GGP

REG: 4614935 DOB: 02/14/22 TAT: 22K BREED: 100% AR

ANDRAS IN FOCUS B175	MYTTY IN FOCUS	ACT BW
ANDRAS FUSION R236	DI ESTONIA 316	84 lbs.
ANDRAS BELLE B167	ANDRAS THUNDER B105	ADJ WW
	ANDRAS BELLE 416	558 lbs.
BROWN JYJ REDEMPTION Y1334	BECKTON NEBULA P P707	ADJ YW
SRA 3510	JYJ MS JOLENE W16	1128 lbs.
YCRA GOLDBAR A38	OLC YOD CHATO S230	
	YCRA GOLDBAR G8	

ProS	HB	GM	CED	BW	WW	YW	ADG	MILK	ME	HPG	CEM	STAY	MARB	YG	CW	REA	FAT
113	58	55	14	-3.2	51	90	.24	24	1	8	9	16	.61	.12	21	-.14	.01
15%	35%	17%	34%	23%	79%	64%	40%	62%	37%	94%	21%	28%	13%	76%	58%	94%	29%



SALE DAY **FRIDAY, MARCH 17, 2023**



16 SRA B. DEEP END HUSKER 229K

REG: 4609437 DOB: 02/24/22 TAT: 229K BREED: 100% AR

BIEBER ROLLIN DEEP Y118	BIEBER ROOSEVELT W384	ACT BW
BIEBER DEEP END B597	BIEBER TILLY 399W	72 lbs.
BIEBER LAURA 158W	LJC MISSION STATEMENT P27	ADJ WW
	BASIN LAURA 5301	621 lbs.
5L INDEPENDENCE 560-298Y	BUF CRK THE RIGHT KIND U199	ADJ YW
LSF SRR SARAH Z2015 F8229	5L BLACK ADINA 525-560	1238 lbs.
LSF SARAH U8010 Z2015	BASIN EXT 5233	
	LSF SARAH MA949 U8010	

ProS	HB	GM	CED	BW	WW	YW	ADG	MILK	ME	HPG	CEM	STAY	MARB	YG	CW	REA	FAT
127	45	81	16	-4.6	67	111	.28	28	9	15	10	11	.85	.10	45	.36	.03
11%	78%	1%	14%	9%	25%	21%	18%	25%	84%	5%	6%	91%	2%	71%	2%	13%	67%

One of two Bieber Deep End sons on the offering. Sleep all night heifer bull with EPDs for growth all in the top 25% and carries a top 2% in GM. He checks a lot of boxes and will be extremely versatile in your program. Note the BW and CED are in the top 10 and 13% of the breed.



17 SRA BIEBER DEEP END 107K

REG: 4609423 DOB: 02/12/22 TAT: 107K BREED: 100% AR

BIEBER ROLLIN DEEP Y118	BIEBER ROOSEVELT W384	ACT BW
BIEBER DEEP END B597	BIEBER TILLY 399W	71 lbs.
BIEBER LAURA 158W	LJC MISSION STATEMENT P27	ADJ WW
	BASIN LAURA 5301	528 lbs.
HXC DECLARATION 5504C	LEACHMAN PLEDGE A282Z	ADJ YW
LSF SRR DELLA C5097 F8107	HXC190Y	1253 lbs.
LSF SRR DELLA C5097	LSF PROSPECT 2035Z	
	LSF DELLA U8037 W9931	

ProS	HB	GM	CED	BW	WW	YW	ADG	MILK	ME	HPG	CEM	STAY	MARB	YG	CW	REA	FAT
118	51	67	14	-3.8	60	103	.27	28	11	17	11	12	.67	.08	39	.33	.03
17%	66%	6%	30%	16%	92%	36%	20%	35%	89%	1%	3%	90%	8%	57%	7%	14%	63%

Another Deep End Heifer bull with a well-balanced pedigree. You don't get much more balanced than these two Deep End sons with dead shot calving ease.



18 SRA SENECA 8629K

REG: 4614999 DOB: 01/13/22 TAT: 8629K BREED: 100% AR

BIEBER ROLLIN DEEP Y118	BIEBER ROOSEVELT W384	ACT BW
RREDS SENECA 731C	BIEBER TILLY 399W	88 lbs.
RREDS ASTER 309A	BECKTON EPIC R397 K	ADJ WW
	MLK CRK ASTER 175	694 lbs.
BROWN JYJ REDEMPTION Y1334	BECKTON NEBULA P P707	ADJ YW
SRA REDEMPTION 8629	JYJ MS JOLENE W16	1012 lbs.
TBS DAISY 629	BHR BASES LOADED 389	
	TBS CHIEF DAISY 202	

ProS	HB	GM	CED	BW	WW	YW	ADG	MILK	ME	HPG	CEM	STAY	MARB	YG	CW	REA	FAT
98	72	26	10	-1.0	70	114	.27	22	4	12	6	18	.26	.15	31	.17	.04
58%	37%	73%	81%	65%	18%	17%	18%	79%	56%	31%	82%	34%	86%	87%	21%	39%	92%

One of my favorites, the RREDS Seneca Sired bulls. This bull is a stud and has that wow factor once you look at him. His mother is a small, framed Redemption cow that has low maintenance, but weans off what we quote as "BANGERS!" This bull will have a small frame and produce easy-fleshing calves. I would put him with cows, as you have a lot more options for heifer bulls as the sale continues.



19 SRA SENECA 7519K

REG: 4615017 DOB: 01/19/22 TAT: 7519K BREED: 100% AR

BIEBER ROLLIN DEEP Y118	BIEBER ROOSEVELT W384	ACT BW
RREDS SENECA 731C	BIEBER TILLY 399W	87 lbs.
RREDS ASTER 309A	BECKTON EPIC R397 K	ADJ WW
	MLK CRK ASTER 175	753 lbs.
LSF SRR FOREMOST 5314C	BROWN PREMIER X7876	ADJ YW
AJS 7519	SRR VICTORIA JOAN 277-675	1279 lbs.
LMG MISS TINA 55199	LMG GILLS INDEED 1603	
	LUCHT TINA 996	

ProS	HB	GM	CED	BW	WW	YW	ADG	MILK	ME	HPG	CEM	STAY	MARB	YG	CW	REA	FAT
95	60	35	10	-1.4	71	116	.28	25	7	11	6	17	.32	.14	35	.28	.05
55%	53%	53%	85%	59%	14%	14%	16%	46%	74%	58%	81%	39%	72%	83%	11%	18%	94%

This may be one of the most eye-appealing bulls on the sale. He is a big-time performance Seneca son. His EPDs speak for themselves, he is the full package. If your end goal is more performance for your calves on all levels. His dam, 7519, has been a top producer for us with a superior udder. Her calf this year at our home place is currently one of the best January-born bulls.

20 SRA ET SENECA 10K ET XGGP

REG: 4614933 DOB: 02/14/22 TAT: 10K BREED: 100% AR

BIEBER ROLLIN DEEP Y118	BIEBER ROOSEVELT W384	ACT BW
RRS SENECA 731C	BIEBER TILLY 399W	85 lbs.
RRS ASTER 309A	BECKTON EPIC R397 K	ADJ WW
	MLK CRK ASTER 175	582 lbs.
BROWN JYJ REDEMPTION Y1334	BECKTON NEBULA P P707	ADJ YW
SRA 3510	JYJ MS JOLENE W16	1067 lbs.
YCRA GOLDBAR A38	OLC YOD CHATO S230	
	YCRA GOLDBAR G8	

ProS	HB	GM	CED	BW	WW	YW	ADG	MILK	ME	HPG	CEM	STAY	MARB	YG	CW	REA	FAT
91	66	25	12	-2.9	63	104	.26	20	4	11	7	17	.28	.16	28	.14	.05
15%	35%	17%	34%	23%	79%	64%	40%	62%	37%	94%	21%	28%	13%	76%	58%	94%	29%

Here is an Embryo Transfer product that has a well-balanced set of EPDs. He will work for a heifer project but may be better suited to run on your cow herd. His dam and granddam have been a staple in our herd for years.



21 SRA MERLIN 9614K XGGP

REG: 4615015 DOB: 01/18/22 TAT: 9614K BREED: 100% AR

LJC MERLIN T179	LJC MISSION STATEMENT P27	ACT BW
WFL MERLIN 018A	BUF CRK REDPRIDE N179	77 lbs.
WFL COMMITMENT 042Y	BROWN COMMITMENT S7206	ADJ WW
	WFL JEWELMAKER 9024	723 lbs.
BECKTON EPIC R397 K	BECKTON EPIC K F075	ADJ YW
SRA MISS EPIC 8614	BECKTON KIT F468 JL	1292 lbs.
GWR RUBY 614	JAG DESIGN 331A	
	GWR RUBY 309	

ProS	HB	GM	CED	BW	WW	YW	ADG	MILK	ME	HPG	CEM	STAY	MARB	YG	CW	REA	FAT
80	35	45	11	-2.7	76	119	.27	34	3	11	3	14	.37	-0.08	27	.47	.00
66%	84%	31%	68%	31%	7%	10%	20%	3%	48%	59%	98%	64%	55%	4%	35%	5%	14%

Merlin has been doing great things for the breed for a long time and I think he is underrated. This first Merlin bull is another versatile specimen. Top 20% in all gaining traits that can be used in any setting. A deep cherry red-hided bull that is one of the best bulls in the offering. Here is another dam out of Beckton Epic checking all the boxes on the progeny she is producing. Suitable for heifers.



22 SRA MERLIN 148K XGGP

REG: 4615001 DOB: 01/14/22 TAT: 148K BREED: 100% AR

LJC MERLIN T179	LJC MISSION STATEMENT P27	ACT BW
WFL MERLIN 018A	BUF CRK REDPRIDE N179	79 lbs.
WFL COMMITMENT 042Y	BROWN COMMITMENT S7206	ADJ WW
	WFL JEWELMAKER 9024	582 lbs.
3SCC DOMAIN A163	BECKTON DOMINOR T122 Z1	ADJ YW
SRA DOMAIN 148H	3SCC EUCLA X723	1121 lbs.
JACOBSON TRADES 5148	5L INDEPENDENCE 560-298Y	
	RED BRYLOR KARMA 12K 235Z	

ProS	HB	GM	CED	BW	WW	YW	ADG	MILK	ME	HPG	CEM	STAY	MARB	YG	CW	REA	FAT
86	29	57	14	-2.5	68	111	.27	31	2	11	6	11	.58	-0.02	25	.31	.00
62%	91%	16%	30%	37%	22%	20%	19%	12%	46%	66%	74%	87%	18%	15%	43%	18%	26%

Another dark cherry red Merlin heifer bull. His gaining traits are top 50% in the breed, so don't worry about this guy sacrificing growth. This bull is the first calf from one of our favorite Domain heifers.



23 SRA MERLIN 023K XGGP

REG: 4615005 DOB: 01/16/22 TAT: 023K BREED: 100% AR

LJC MERLIN T179	LJC MISSION STATEMENT P27	ACT BW
WFL MERLIN 018A	BUF CRK REDPRIDE N179	78 lbs.
WFL COMMITMENT 042Y	BROWN COMMITMENT S7206	ADJ WW
	WFL JEWELMAKER 9024	684 lbs.
RRA ROLL TIDE 135 355	RRA CRIMSON TIDE 135	ADJ YW
LAZY MISS HALYN 023-437B023	MLK CRK LAKOTA 095	1228 lbs.
RUST MISS 437B	C-T DKK DUKE 1100	
	BKT LARKEISA M288 CK	

ProS	HB	GM	CED	BW	WW	YW	ADG	MILK	ME	HPG	CEM	STAY	MARB	YG	CW	REA	FAT
81	31	50	10	-1.0	79	133	.34	32	8	11	6	12	.29	-0.08	38	.50	-.01
68%	89%	25%	83%	64%	3%	2%	2%	8%	81%	55%	86%	81%	75%	4%	8%	4%	4%

BIG TIME performance Merlin son. Top 5% in the breed in ADG, WW, YW top 10% in the breed in REA, YG, CW, FAT. He was made for cows and will tip the scales at weaning. His mother goes back to RAA Roll Tide and is one of the five cows we flushed in 2022. If you are finishing your own cattle, this bull has the top pedigree in the sale for those needs. His dam is the widest-bodied heifer we have ever had on the place. Another top bull on the offering in my eyes. This bull is out of a first calf heifer.





24 WKK SRA MERLIN 178K

GGP

REG: 4640873 DOB: 02/14/22 TAT: 178K BREED: 100% AR

LJC MERLIN T179	LJC MISSION STATEMENT P27	ACT BW
WFL MERLIN 018A	BUF CRK REDPRIDE N179	78 lbs.
WFL COMMITMENT 042Y	BROWN COMMITMENT S7206	ADJ WW
	WFL JEWELMAKER 9024	726 lbs.
ECC ROCK A063C	BROWN SOLID ROCK Z7245	ADJ YW
BIEBER QUEEN 178E	ECC PEARL Z48X	1174 lbs.
BIEBER QUEEN 169C	ANDRAS FUSION R236	
	BIEBER QUEEN 421A	

ProS	HB	GM	CED	BW	WW	YW	ADG	MILK	ME	HPG	CEM	STAY	MARB	YG	CW	REA	FAT
91	38	53	13	-3.3	65	101	.22	31	-1	9	7	12	.60	-.05	22	.26	-.01
47%	81%	17%	46%	23%	32%	40%	50%	11%	28%	91%	68%	80%	13%	7%	54%	22%	7%

Another large framed great looking Merlin bull. He will be at home with heifers but does not give up performance traits. Another versatile bull that checks all the boxes. He is a jaw dropper visually with tremendous depth of rib and overall shape. Don't sleep on this one!



25 SRA MERLIN 0519K

GGP

REG: 4615019 DOB: 01/20/22 TAT: 519K BREED: 100% AR

LJC MERLIN T179	LJC MISSION STATEMENT P27	ACT BW
WFL MERLIN 018A	BUF CRK REDPRIDE N179	88 lbs.
WFL COMMITMENT 042Y	BROWN COMMITMENT S7206	ADJ WW
	WFL JEWELMAKER 9024	797 lbs.
ANDRAS FUSION R236	ANDRAS IN FOCUS B175	ADJ YW
SRA BC FUSION 0519	ANDRAS BELLE B167	1323 lbs.
SRA BC 8519	BROWN COMPLETE B238	
	LMG MISS TINA 55199	

ProS	HB	GM	CED	BW	WW	YW	ADG	MILK	ME	HPG	CEM	STAY	MARB	YG	CW	REA	FAT
93	32	61	12	-1.2	81	128	.30	34	2	9	7	11	.60	-.06	28	.36	-.01
43%	85%	11%	39%	60%	7%	4%	9%	2%	44%	92%	68%	83%	14%	7%	32%	12%	9%

A Powerful Merlin son out of a first calf heifer. By now you can see we used Merlin on 50% of our heifers in 2021. This guy is suitable for heifers, but he shines once again like the other Merlin sons being top 5% in ADG and WW and the top 10% in YW. Another full-package bull that moves freely and has the visual appeal you're looking for.



26 SRA ET FRANCHISE 21K ET

GGP

REG: 4614945 DOB: 02/26/22 TAT: 21K BREED: 100% AR

SPUR FRANCHISE OF GARTON	SPUR FRANCHISE 7070	ACT BW
9 MILE FRANCHISE 6305	H & H IRENE LASS 0135	82 lbs.
C-BAR ABIGRACE Y11	TR COLT 45 UT806	ADJ WW
	C-BAR & BROWN ABIGRACE T712	644 lbs.
OLC YOD CHATO S230	OLC ELINE CHATO P25	ADJ YW
YCRA GOLDBAR A38	OLC MIMI M295	1057 lbs.
YCRA GOLDBAR G8	YCRA KING ROB	
	PSR GOLDBAR 819	

ProS	HB	GM	CED	BW	WW	YW	ADG	MILK	ME	HPG	CEM	STAY	MARB	YG	CW	REA	FAT
114	66	47	14	-3.5	50	89	.24	30	2	9	11	17	.41	.03	26	.36	.03
49%	66%	32%	34%	20%	83%	68%	41%	11%	41%	90%	4%	74%	52%	31%	40%	12%	76%

The first 9 Mile Franchise Bull on the offering stemming from Embryo Transfer. His dam produced one of our high-selling bulls for \$8,500 in 2021, which was a Merlin son. This year we changed it up to a 9 Mile Franchise on this flush and this bull was a great outcome of that mating. All-day heifer bull that doesn't give up performance and his heifers will be the replacement kind.



27 SRA 9 MILE 174K

GGP

REG: 4615117 DOB: 03/22/22 TAT: 174K BREED: 100% AR

SPUR FRANCHISE OF GARTON	SPUR FRANCHISE 7070	ACT BW
9 MILE FRANCHISE 6305	H & H IRENE LASS 0135	72 lbs.
C-BAR ABIGRACE Y11	TR COLT 45 UT806	ADJ WW
	C-BAR & BROWN ABIGRACE T712	613 lbs.
MSR A341	VGW OLY 903	ADJ YW
SHADY'S MS OLY E174	BIEBER LAURA 325Y	1214 lbs.
SHADY'S MS. IMPR. ROB 446	LMN IMPRESSIVE ROB1095B	
	SHADY'S MS GLACIER 108	

ProS	HB	GM	CED	BW	WW	YW	ADG	MILK	ME	HPG	CEM	STAY	MARB	YG	CW	REA	FAT
111	63	48	15	-4.8	53	94	.26	31	4	11	10	16	.37	.06	30	.26	.02
53%	73%	31%	19%	7%	77%	56%	27%	12%	57%	54%	6%	80%	64%	48%	26%	24%	63%

One of the youngest bulls on the sale, but you would not be able to notice. Sleep all night heifer bull that once again doesn't give up too much performance.

28 WKK SRA 9 MILE 485K

GGP

REG: 4615127 DOB: 01/26/22 TAT: 485K BREED: 98.4% AR 1.6% XX

9 MILE FRANCHISE 6305
C-BAR ABIGRACE Y11

SPUR FRANCHISE 7070
H & H IRENE LASS 0135
TR COLT 45 UT806
C-BAR & BROWN ABIGRACE T712

ACT BW
67 lbs.

ADJ WW
688 lbs.

BIEBER BRAVE E573
BIEBER DURHEIM 485G
BIEBER DURHEIM 147B

BIEBER SPARTACUS A193
BIEBER ELDORENE 246C
BIEBER H HUGHES W109
BIEBER DURHEIM 274Z

ADJ YW
1231 lbs.

ProS	HB	GM	CED	BW	WW	YW	ADG	MILK	ME	HPG	CEM	STAY	MARB	YG	CW	REA	FAT
117	57	60	12	-2.3	67	116	.30	32	8	11	10	15	.49	.12	45	.41	.04
43%	83%	13%	58%	41%	25%	12%	5%	8%	80%	60%	5%	88%	34%	83%	3%	8%	93%

Another 9 Mile Franchise son out of a Bieber Brave dam. Versatile for heifers and cows with great EPDs for growth.



29 SRA 9 MILE 5574K

GGP

REG: 4615053 DOB: 02/04/22 TAT: 5574K BREED: 100% AR

9 MILE FRANCHISE 6305
C-BAR ABIGRACE Y11

SPUR FRANCHISE 7070
H & H IRENE LASS 0135
TR COLT 45 UT806
C-BAR & BROWN ABIGRACE T712

ACT BW
77 lbs.

ADJ WW
646 lbs.

LMG GILLS INDEED 1603
LMG MISS MTX 5574
LMG MISS MTX 1364

RED TOWAW INDEED 104H
LMG DYNETTE 3041
LMG GILLS BULL DAWG 8507-743
LMG MTX 062

ADJ YW
1273 lbs.

ProS	HB	GM	CED	BW	WW	YW	ADG	MILK	ME	HPG	CEM	STAY	MARB	YG	CW	REA	FAT
119	80	39	14	-3.6	58	95	.23	34	3	10	10	18	.42	.06	30	.26	.02
37%	35%	49%	36%	18%	61%	55%	47%	2%	49%	77%	5%	48%	50%	48%	27%	24%	65%

A Franchise son that is a sleeper in the sale. He may be one of the wider bulls on the offering. His dam produced our highest-selling bull in 2019 and is still dropping great calves year in and year out for us. This will be a larger framed bull, his dam is one of our bigger cows. However, -3.6 BW for a sleep-all-night heifer bull that doesn't lack much performance.



30 SRA 9 MILE 1408K

GGP

REG: 4615025 DOB: 01/26/22 TAT: 1408K BREED: 99.9% AR 0.1% XX

9 MILE FRANCHISE 6305
C-BAR ABIGRACE Y11

SPUR FRANCHISE 7070
H & H IRENE LASS 0135
TR COLT 45 UT806
C-BAR & BROWN ABIGRACE T712

ACT BW
85 lbs.

ADJ WW
623 lbs.

SCHULER REBEL 0029X
SCHWEITZER 1601
RBH VERDALE 1407

BECKTON NEBULA P P707
SOR RUTH RMR 5055R
FEDDES OSCAR 1119
RBH VERDI 808

ADJ YW
1118 lbs.

ProS	HB	GM	CED	BW	WW	YW	ADG	MILK	ME	HPG	CEM	STAY	MARB	YG	CW	REA	FAT
104	65	40	14	-2.9	55	97	.26	37	4	10	9	17	.45	.11	24	.13	.04
63%	70%	45%	36%	30%	70%	50%	26%	1%	56%	81%	17%	71%	40%	75%	46%	47%	85%

A 9 Mile Sired bull out of a Schuler Rebel dam. Heifer bull with an outstanding maternal pedigree. Will be a great option to produce replacement heifers. His appeal and structure are more aimed at a heifer bull like the other 9 Mile Franchise sons. Suitable for heifers.



31 SRA FRANCHISE 9612K

GGP

REG: 4614991 DOB: 01/11/22 TAT: 9612K BREED: 100% AR

9 MILE FRANCHISE 6305
C-BAR ABIGRACE Y11

SPUR FRANCHISE 7070
H & H IRENE LASS 0135
TR COLT 45 UT806
C-BAR & BROWN ABIGRACE T712

ACT BW
79 lbs.

ADJ WW
675 lbs.

FEDDES BIG SKY R9
SRA BIG SKY LONA 9612
TBS COVENANT 612

BIEBER MAKE MIMI 7249
FEDDES LAKINA 310
PRESSER'S COVENANT 4037
TBS MS RED NATIVE 074

ADJ YW
1185 lbs.

ProS	HB	GM	CED	BW	WW	YW	ADG	MILK	ME	HPG	CEM	STAY	MARB	YG	CW	REA	FAT
119	69	50	14	-3.9	58	97	.24	35	5	12	10	16	.48	.03	34	.40	.02
38%	63%	24%	27%	15%	61%	51%	39%	1%	63%	45%	7%	76%	34%	30%	14%	7%	60%

Another great 9-mile Franchise son. His dam is out of a Big Sky daughter who as a first calf heifer weaned off at 760 pound calf in 2021. He is a heifer bull option that is a curve bender.





32 SRA REDEMPTION 9262K GGP

REG: 4615007 DOB: 01/16/22 TAT: 9262K BREED: 100% AR

BECKTON NEBULA P P707	BECKTON NEBULA M045	ACT BW
BROWN JYJ REDEMPTION Y1334	BECKTON LANA M809 EP	88 lbs.
JYJ MS JOLENE W16	LJC MISSION STATEMENT P27	ADJ WW
	HXC JOLENE R548	721 lbs.
RED CROWFOOT OLE'S OSCAR	MLK CRK CUB 722	ADJ YW
SRA OLYS KATY 9262	RED CROWFOOT OMEGA 9179J	1289 lbs.
HLH MS CONQUEST 5054 3262	HXC CONQUEST 4405P	
	HLH MS SHY ANN 709 5054	

ProS	HB	GM	CED	BW	WW	YW	ADG	MILK	ME	HPG	CEM	STAY	MARB	YG	CW	REA	FAT
115	61	54	12	-1.8	72	118	.29	28	7	11	7	17	.68	.15	26	-.05	.02
44%	36%	57%	25%	53%	21%	41%	68%	14%	53%	39%	67%	33%	11%	27%	88%	72%	27%

We started our program out with Redemption seven years ago and we have the final three Redemption sons on the offering. This Redemption Stud is a heifer bull option, but his highlight is being top 10% in all the gaining traits. His Dam is a daughter of Ole Oscar and her first calf was lot one last year on our 2022 sale. In past sales, this bull would serve as lot one, but with the lineup this year there are just too many good options.



33 GWR REDEMPTION 203 GGP

REG: 4642449 DOB: 01/29/22 TAT: 203 BREED: 99.9% AR 0.1% XX

BECKTON NEBULA P P707	BECKTON NEBULA M045	ACT BW
BROWN JYJ REDEMPTION Y1334	BECKTON LANA M809 EP	70 lbs.
JYJ MS JOLENE W16	LJC MISSION STATEMENT P27	ADJ WW
	HXC JOLENE R548	635 lbs.
ANDRAS FUSION R236	ANDRAS IN FOCUS B175	ADJ YW
GWR LANA 002	ANDRAS BELLE B167	1220 lbs.
GWR LANA 403	SCHULER ENVOY 2115Z	
	GWR LANA 202	

ProS	HB	GM	CED	BW	WW	YW	ADG	MILK	ME	HPG	CEM	STAY	MARB	YG	CW	REA	FAT
120	68	52	15	-3.7	56	97	.26	26	2	9	9	18	.61	.13	22	-.12	.01
11%	21%	21%	16%	18%	67%	50%	29%	50%	44%	86%	19%	15%	13%	79%	54%	93%	35%

This Brown Redemption son is out of a young Andras Fusion daughter that will likely move to the top of the GWR herd. His type is easy fleshing and massive on a wide undercarriage. With legendary calving ease on both sides of the pedigree this young herd sire is recommended for heifers and cows

Consigned by GWR Red Angus



34 SRA REDEMPTION 202K GGP

REG: 4614987 DOB: 01/10/22 TAT: 202K BREED: 100% AR

BECKTON NEBULA P P707	BECKTON NEBULA M045	ACT BW
BROWN JYJ REDEMPTION Y1334	BECKTON LANA M809 EP	83 lbs.
JYJ MS JOLENE W16	LJC MISSION STATEMENT P27	ADJ WW
	HXC JOLENE R548	591 lbs.
DAMAR REDEEMING C618	BROWN JYJ REDEMPTION Y1334	ADJ YW
ECCRA MAY REDEEM	BROWN MS CONQUEST 27870	1059 lbs.
JMAK BLACKCAP MAY 7402	R B ACTIVE DUTY 010	
	S A V BLACKCAP MAY 4566	

ProS	HB	GM	CED	BW	WW	YW	ADG	MILK	ME	HPG	CEM	STAY	MARB	YG	CW	REA	FAT
107	44	63	14	-3.9	65	114	.31	22	6	12	8	13	.60	.18	34	-.03	.03
25%	71%	9%	32%	16%	32%	16%	7%	77%	69%	29%	26%	78%	14%	95%	13%	82%	68%

Another Redemption son option that is a heifer bull with gaining traits in the top 20% of the breed. He is the first calf out of our black-hided Damar Redeeming Cow.



35 SRA ET ROLLING DEEP 219K ET GGP

REG: 4614947 DOB: 03/04/22 TAT: 219K BREED: 100% AR

BIEBER ROOSEVELT W384	BIEBER ROUGH RIDER 10712	ACT BW
BIEBER ROLLIN DEEP Y118	BIEBER SHEBA 9602	84 lbs.
BIEBER TILLY 399W	BIEBER BOONE 8000	ADJ WW
	BIEBER TILLY 303S	639 lbs.
BIEBER HARD DRIVE Y120	LACY GOLD BAR 8123	ADJ YW
BIEBER GALLEE 551D	BIEBER LAURA 158W	1071 lbs.
BIEBER GALLEE 291X	BROWN VACATION H7106	
	BIEBER GALLEE 9513	

ProS	HB	GM	CED	BW	WW	YW	ADG	MILK	ME	HPG	CEM	STAY	MARB	YG	CW	REA	FAT
105	60	45	10	-1.4	70	111	.26	25	10	12	7	17	.47	.05	35	.46	.03
33%	46%	33%	79%	57%	19%	21%	26%	52%	88%	39%	57%	36%	36%	39%	13%	5%	82%

Don't miss this bull! He is a Bieber Rolling Deep Son out of the ever-famous Bieber Galle 551D dam. This Embryo was purchased from Biebers and here is the result. He is another young March bull 60 days behind some of the others, so study your lesson here. Very balanced package of EPDs.

36 SRA 5L GENUINE 232K GGP

REG: 4609439 DOB: 01/18/22 TAT: 232K BREED: 100% AR

5L GENUINE 99-85Y
5L GENUINE 1603-195C
 5L RUBY 21-1603

HXC DECLARATION 5504C
LSF SRR GILDA A3156 F8232
 LSF SRR GILDA W9068 A3156

BUF CRK THE RIGHT KIND U199
 5L MARTA 817-99
 5L CRAFTSMAN 1134-150X
 5L FIREFLY 679-21

LEACHMAN PLEDGE A282Z
 HXC190Y
 HXC CONQUEST 4405P
 LSF GILDA S6132 W9068

ACT BW
89 lbs.
 ADJ WW
581 lbs.
 ADJ YW
1190 lbs.

ProS	HB	GM	CED	BW	WW	YW	ADG	MILK	ME	HPG	CEM	STAY	MARB	YG	CW	REA	FAT
104	30	74	10	-0.1	74	125	.31	25	13	13	7	11	.93	.16	32	-.01	.03
30%	91%	3%	81%	83%	7%	5%	6%	61%	94%	24%	41%	89%	1%	94%	13%	76%	68%

If you read my welcome message, you know I have concerns about the breed focusing to much on BW and giving up pounds and profit and weaning. The 5L Genuine son is for your cow herd. Top 10% in ADG, WW, and YW. Top 1% in Marbling top 4% in GM. This bull will produce the calves we want to feed out. I take his 89 lb. birth weight as where I want my calves to start if I am taking them to market. This bull is very balanced on his feet and deep throughout.



37 SRA HXC DECLARATION 8909K GGP

REG: 4614995 DOB: 01/12/22 TAT: 8909K BREED: 100% AR

LEACHMAN PLEDGE A282Z
HXC DECLARATION 5504C
 HXC190Y

BROWN COMPLETE B238
SRA BC 8909B
 JAG RUBY 909W

LSF NEXTPECTION 0083X
 LCOC ZARA TG004
 BECKTON NEBULA P P707
 HXC ELLIE MAY MA638
 LSF TAKEOVER 9943W
 BROWN MS P707 X7580
 BROWN COMMITMENT S7206
 JAG RUBY 721T

ACT BW
88 lbs.
 ADJ WW
759 lbs.
 ADJ YW
1432 lbs.

ProS	HB	GM	CED	BW	WW	YW	ADG	MILK	ME	HPG	CEM	STAY	MARB	YG	CW	REA	FAT
75	15	60	10	0.3	79	128	.31	26	14	13	6	10	.64	.08	32	.09	.00
76%	98%	13%	82%	86%	4%	4%	6%	57%	96%	28%	70%	94%	12%	60%	17%	56%	24%

Here is the heaviest bull on the sale. Sired by the outstanding HXC Declaration bull. He tipped the scales with a yearling weight of 1,460 pounds on January 25th. I had to do the math on him he was born on 1-12-22 at 88 lbs. which means he has averaged 3.6 pounds per day since birth. Wow! How does this correspond to EPDs? No surprise he is top 5% in ADG, WW, YW, and the top 15% in Grid master. Tired of your red calves being little, here is your solution. His dam is out-sired by Brown Complete and is a standout in our herd. His granddam goes all the way back to one of our starter Jim Gosey cows.



38 SRA HXC DECLARATION 2141K GGP

REG: 4615011 DOB: 01/18/22 TAT: 2141K BREED: 100% AR

LEACHMAN PLEDGE A282Z
HXC DECLARATION 5504C
 HXC190Y

RED LAZY MC COWBOY CUT 26U
KAW CC LANAS CUT 2141
 JAG LANA 516R

LSF NEXTPECTION 0083X
 LCOC ZARA TG004
 BECKTON NEBULA P P707
 HXC ELLIE MAY MA638
 RED LAZY MC STOUT 30S
 RED LAZY MC STAR 185M
 BECKTON LANCER F442 T
 SOR FIREFLY RG 9549J

ACT BW
88 lbs.
 ADJ WW
756 lbs.
 ADJ YW
1352 lbs.

ProS	HB	GM	CED	BW	WW	YW	ADG	MILK	ME	HPG	CEM	STAY	MARB	YG	CW	REA	FAT
57	13	45	9	1.8	81	134	.33	20	14	13	5	10	.33	.05	39	.18	.00
94%	98%	36%	90%	97%	7%	2%	3%	95%	96%	27%	82%	96%	70%	44%	6%	37%	11%

Another HXC Declaration Standout. Another scale tipper with a yearling weight of 1,352 lbs. if you do the math from the last bull that puts him at 3.4 ADG since birth. Another jaw dropper. Another example of how EPDs don't lie is he is in the top 3% in the breed for ADG, WW, and YW. If you want to add Frame to your herd this bull needs to be on your list. Steers finishing at 1,500 lbs. will be the low side for this herd sire.



SCHWEITZER

Red Angus

ANNUAL BULL AND FEMALE SALE
 FRIDAY, MARCH 17 / 1:00 PM / PLEASANT DALE, NE



39 KAW MR BRIGHT EYES 249

GGP

REG: 4599893 DOB: 01/14/22 TAT: 249 BREED: 100% AR

WEBR TC CARD SHARK 1015
WEBR SHAMELESS 34G
 EIR Y200

WEBR DOC HOLIDAY 2N
 PFFR MS NYACK 237
 BIEBER MAKE MIMI 7249
 EIR W211

ACT BW
70 lbs.

JAG DESIGN 331A
KAW DESIGNER BECKY 677
 KAW M26P BECTORIA 963

JAG DESIGN 108Y
 JAG LANA 815U
 RED FINE LINE MULBERRY 26P
 JAG LANA 516R

ADJ WW
660 lbs.

ADJ YW
1101 lbs.

ProS	HB	GM	CED	BW	WW	YW	ADG	MILK	ME	HPG	CEM	STAY	MARB	YG	CW	REA	FAT
89	71	17	13	-1.7	59	94	.22	27	5	10	8	18	.11	.03	30	.20	.00
57%	20%	87%	47%	53%	56%	58%	58%	34%	59%	76%	31%	12%	99%	30%	25%	33%	20%

Webr Shameless stamped this bull with his power, performance and attractive phenotype. His mother is a consistent producer of top selling heifers and bulls. Adequate for heifers and recommended for cows.

Consigned by KAW Red Angus



40 ECCRA RED EYE SPECIAL 201K

GGP

REG: 4584249 DOB: 01/17/22 TAT: 201K BREED: 100% AR

DAMAR POWER EYE C510
TWG RED EYE SPECIAL 301F
 TWG ELTHEA 301D

RED SOO LINE POWER EYE 161X
 DAMAR BALLET X222
 RED RINGSTEAD KARGO 215U
 DAMAR ELTHEA X301

ACT BW
68 lbs.

ANDRAS FUSION R236
C9CC MS E119 BLOSSOM G129 T
 C9CC BLOSSOM E119 ET

ANDRAS IN FOCUS B175
 ANDRAS BELLE B167
 RED SOO LINE POWER EYE 161X
 DAMAR BERRY BLOSSOM X207

ADJ WW
634 lbs.

ADJ YW
1129 lbs.

ProS	HB	GM	CED	BW	WW	YW	ADG	MILK	ME	HPG	CEM	STAY	MARB	YG	CW	REA	FAT
90	49	40	12	-0.2	66	108	.26	25	4	10	7	15	.34	.07	29	.06	.00
45%	55%	39%	44%	74%	37%	32%	27%	57%	57%	77%	53%	45%	64%	53%	28%	68%	17%

Red Eye Special is a popular national champion Red Angus bull selected Grand Champion Red Angus bull at the NAILE in 2020 and the Cattleman's Congress in 2021. This bull's dam is the top cow at Ellis Cattle Company and a Fusion daughter raising him as her second calf. He is deep sided, smooth fronted and athletic on the move. This attractive Package is adequate for heifers and recommended for cows.



41 SRA HXC DECLARATION 3262K

GGP

REG: 4614977 DOB: 01/06/22 TAT: 3262K BREED: 100% AR

LEACHMAN PLEDGE A282Z
HXC DECLARATION 5504C
 HXC190Y

LSF NEXTPECTION 0083X
 LCOC ZARA T6004
 BECKTON NEBULA P P707
 HXC ELLIE MAY MA638

ACT BW
78 lbs.

HXC CONQUEST 4405P
HLH MS CONQUEST 5054 3262
 HLH MS SHY ANN 709 5054

BECKTON JULIAN GG B571
 HXC ELLIE MAY MA638
 LCC CHEYENNE B221L
 HLH LIGHTN LASS 317 709

ADJ WW
507 lbs.

ADJ YW
1069 lbs.

ProS	HB	GM	CED	BW	WW	YW	ADG	MILK	ME	HPG	CEM	STAY	MARB	YG	CW	REA	FAT
67	19	48	12	-1.6	62	106	.28	22	15	12	7	12	.51	.10	24	-.08	.01
86%	96%	28%	64%	55%	42%	29%	18%	90%	97%	47%	48%	87%	28%	71%	46%	89%	27%

Another HXC Declaration Son to add pounds to your herd, but he offers some calving ease as well being a -1.6 BW. His dam is our favorite HXC Conquest daughter.



42 SRA HXC DEC 7348AK

GGP

REG: 4615037 DOB: 01/27/22 TAT: 7348AK BREED: 100% AR

LEACHMAN PLEDGE A282Z
HXC DECLARATION 5504C
 HXC190Y

LSF NEXTPECTION 0083X
 LCOC ZARA T6004
 BECKTON NEBULA P P707
 HXC ELLIE MAY MA638

ACT BW
90 lbs.

FEDDES BIG SKY R9
AJS BIG SKY 7348
 YCRA KURUBA A65

BIEBER MAKE MIMI 7249
 FEDDES LAKINA 310
 OLC YOD CHATO S230
 YCRA KURUBA G33

ADJ WW
742 lbs.

ADJ YW
1229 lbs.

ProS	HB	GM	CED	BW	WW	YW	ADG	MILK	ME	HPG	CEM	STAY	MARB	YG	CW	REA	FAT
78	21	56	8	1.5	77	127	.31	23	13	13	5	11	.48	.03	39	.21	-.01
75%	96%	17%	95%	95%	5%	5%	6%	85%	95%	21%	86%	89%	36%	30%	6%	30%	4%

The final HXC Declaration son can be your solution to heavier calves. Top 5% in ADG, WW, and YW. His mother is a Stronghold Sired Cow that has done great things for us.

43 SRA RED BEAR 4116K



REG: 4615055 DOB: 02/09/22 TAT: 4116K BREED: 100% AR

MANN RED BOX 55C
DUFF RED BEAR 18154
 RED CC PANTERA 20A

SLGN WIDELOAD 920W
 PELTON MISS AJA 0839U
 STEWART PANTHER 19X
 RED CCY SAVANNAH 5U
 CROWFOOT 6004S
 RED CROWFOOT BRNDINA 6359S
 BUF CRK LANCE R102
 HLH MS SHY ANN 981 6086

ACT BW
 84 lbs.
 ADJ WW
 671 lbs.
 ADJ YW
 1154 lbs.

RED CROWFOOT MOONSHINE 8081U
POKE MS SHINE 9197 4116
 HLH LADY LANCE 6068 9197

ProS	HB	GM	CED	BW	WW	YW	ADG	MILK	ME	HPG	CEM	STAY	MARB	YG	CW	REA	FAT
53	49	4	12	-0.9	68	104	.22	21	7	11	7	15	.19	.06	18	-.01	.01
75%	32%	91%	20%	44%	40%	67%	86%	71%	38%	30%	76%	26%	47%	14%	92%	70%	12%

Another Red Bear son that checks a lot of boxes. The sire of his mother, Reds Crowfoot Moonshine needs no introduction. This bull will finish out with a larger frame like his mother.



44 SRA RED BEAR 7668K



REG: 4615069 DOB: 02/14/22 TAT: 7668K BREED: 100% AR

MANN RED BOX 55C
DUFF RED BEAR 18154
 RED CC PANTERA 20A

SLGN WIDELOAD 920W
 PELTON MISS AJA 0839U
 STEWART PANTHER 19X
 RED CCY SAVANNAH 5U
 BROWN PREMIER X7876
 SRR VICTORIA JOAN 277-675
 LMG GILLS INDEED 1603
 LMG MISS ROCKER 0006

ACT BW
 82 lbs.
 ADJ WW
 677 lbs.
 ADJ YW
 1225 lbs.

LSF SRR FOREMOST 5314C
AJS 7668 SRA FOREMOST
 LMG MISS ROCKER 5668

ProS	HB	GM	CED	BW	WW	YW	ADG	MILK	ME	HPG	CEM	STAY	MARB	YG	CW	REA	FAT
84	49	35	12	-2.1	63	103	.25	25	10	11	8	15	.36	.08	29	.09	.01
20%	28%	31%	34%	39%	47%	59%	70%	27%	51%	28%	72%	22%	17%	22%	48%	47%	12%

Another great red bear son that is very versatile out of a young cow. Top 30% in many gaining traits while still suitable for heifers!



45 WKK SRA RED BEAR 9542K



REG: 4615123 DOB: 01/20/22 TAT: 9542K BREED: 100% AR

MANN RED BOX 55C
DUFF RED BEAR 18154
 RED CC PANTERA 20A

SLGN WIDELOAD 920W
 PELTON MISS AJA 0839U
 STEWART PANTHER 19X
 RED CCY SAVANNAH 5U
 RED SOO LINE POWER EYE 161X
 RED BRYLOR CARMEN 64X
 LSF HERDBUILDER 1058Y
 RAISLAND LAKOTA 528-923

ACT BW
 88 lbs.
 ADJ WW
 659 lbs.
 ADJ YW
 1230 lbs.

WCR MOJO 3012A
PIE LAKOTA 9542
 RAISLAND LAKOTA 331-528

ProS	HB	GM	CED	BW	WW	YW	ADG	MILK	ME	HPG	CEM	STAY	MARB	YG	CW	REA	FAT
78	38	40	12	0.0	65	107	.26	29	12	11	7	14	.39	.10	31	.10	.02
25%	40%	28%	25%	63%	54%	62%	69%	5%	68%	21%	64%	32%	12%	36%	58%	56%	27%

A Red Bear son that has stood out this fall. His Dam was acquired from Piepers and the PIE Lakota family has done really well.



46 SRA RED BEAR 6117K



REG: 4615067 DOB: 02/14/22 TAT: 6117K BREED: 100% AR

MANN RED BOX 55C
DUFF RED BEAR 18154
 RED CC PANTERA 20A

SLGN WIDELOAD 920W
 PELTON MISS AJA 0839U
 STEWART PANTHER 19X
 RED CCY SAVANNAH 5U
 PIE CODE RED 9058
 MISS BHR PRINCESS 53
 LSF NSF POUNDBAKER 9534W
 NAMKEN NORTHSTAR 13N

ACT BW
 82 lbs.
 ADJ WW
 588 lbs.
 ADJ YW
 1098 lbs.

BHR CODE RED 2143
TBS RED STAR 6117
 NAMKEN NORTHSTAR 25-42Y

ProS	HB	GM	CED	BW	WW	YW	ADG	MILK	ME	HPG	CEM	STAY	MARB	YG	CW	REA	FAT
84	62	22	12	0.1	65	107	.26	21	12	11	9	17	.24	.09	28	-.01	.00
28%	14%	65%	24%	64%	48%	59%	70%	67%	68%	20%	35%	12%	36%	24%	73%	74%	8%

The Final Red Bear son that once again was made to add pounds to calves come weaning in your cow herd. His dam is a PIE Code Red daughter which was a short-lived outstanding sire in the breed.





47 SRA RED BLOOD 5668K

GGP

REG: 4615039 DOB: 01/28/22 TAT: 5668K BREED: 100% AR

ROJAS RIOJA 6052
DUFF RED BLOOD 18114
 DUFF JUANADA 927K 15124

LMG GILLS INDEED 1603
LMG MISS ROCKER 5668
 LMG MISS ROCKER 0006

PZC TMAS FIRESTORM 1800 ET
 SIX MILE LAKOTA 112Y
 RED CROWFOOT OLE'S OSCAR
 O C C JUANADA 927K
 RED TOWAW INDEED 104H
 LMG DYNETTE 3041
 BIEBER MAKE MIMI 7249
 CFRA ROCKER 6105-9820

ACT BW
78 lbs.
ADJ WW
594 lbs.
ADJ YW
1066 lbs.

ProS	HB	GM	CED	BW	WW	YW	ADG	MILK	ME	HPG	CEM	STAY	MARB	YG	CW	REA	FAT
96	64	31	15	-3.4	54	82	.17	25	2	12	7	17	.49	-0.4	15	.13	-.01
43%	23%	71%	16%	20%	69%	80%	87%	57%	41%	40%	48%	18%	30%	12%	83%	56%	7%

A Red Blood son that fits the all-night heifer bull segment. His DAM has had a calf on every sale since 2017!



48 GWR RED BLOOD 211

GGP

REG: 4642389 DOB: 02/19/22 TAT: 211 BREED: 100% AR

ROJAS RIOJA 6052
DUFF RED BLOOD 18114
 DUFF JUANADA 927K 15124

GWR GP MR. RIGHT 013
GWR ROBIN 305
 GWR NE ROBINETTE 016

PZC TMAS FIRESTORM 1800 ET
 SIX MILE LAKOTA 112Y
 RED CROWFOOT OLE'S OSCAR
 O C C JUANADA 927K
 GLACIER PIONEER 939
 BIEBER SIERRA 5516
 JAG NO EQUAL 5807R
 MSJ-RROBINHOOD-444-1031

ACT BW
70 lbs.
ADJ WW
688 lbs.
ADJ YW
1229 lbs.

ProS	HB	GM	CED	BW	WW	YW	ADG	MILK	ME	HPG	CEM	STAY	MARB	YG	CW	REA	FAT
87	60	28	16	-3.7	53	77	.15	28	0	11	7	17	.51	.00	9	.02	.00
57%	32%	77%	10%	16%	73%	85%	92%	26%	33%	62%	62%	18%	27%	26%	92%	78%	24%

This bull is the last offspring of the great GWR donor cow Robin 305. As a donor cow she has produced on the top end of the herd every year and this is no exception. This bull's exceptional calving ease and attractive package put him at the top of the group. Recommended for heifers and cows.

Consigned by GWR Red Angus



49 SRA SENECA 938K

GGP

REG: 4609461 DOB: 03/27/22 TAT: 938K BREED: 100% AR

BIEBER ROLLIN DEEP Y118
RREDS SENECA 731C
 RREDS ASTER 309A

ANDRAS NEW DIRECTION R240
ECCO 938G
 AMBERLIGHT 058

BIEBER ROOSEVELT W384
 BIEBER TILLY 399W
 BECKTON EPIC R397 K
 MLK CRK ASTER 175
 ANDRAS IN FOCUS B152
 ANDRAS KURUBA B111
 LARSON MEDALIST 730
 AMBERLIGHT GRAND 107-366

ACT BW
80 lbs.
ADJ WW
637 lbs.
ADJ YW
1185 lbs.

ProS	HB	GM	CED	BW	WW	YW	ADG	MILK	ME	HPG	CEM	STAY	MARB	YG	CW	REA	FAT
85	60	25	11	-1.4	74	118	.28	20	7	13	6	16	.25	.16	38	.25	.05
81%	67%	74%	66%	60%	10%	11%	16%	89%	73%	27%	77%	64%	88%	91%	8%	24%	95%

Here is another Seneca son. He is the youngest bull on the sale, but we felt he earned a spot in the lineup. Top 20% in the gaining traits with a moderate birth weight which makes him very versatile for your herd.



50 SRA SCENCA 64K ET XGGP

REG: 4614967 DOB: 01/29/22 TAT: 64K BREED: 100% AR

BIEBER ROLLIN DEEP Y118	BIEBER ROOSEVELT W384	ACT BW
RREDS SENECA 731C	BIEBER TILLY 399W	84 lbs.
RREDS ASTER 309A	BECKTON EPIC R397 K	ADJ WW
	MLK CRK ASTER 175	624 lbs.
LMG GILLS INDEED 8845	RED TOWAW INDEED 104H	ADJ YW
LMG ROXIE 5715	LMG DYNETTE 3041	1080 lbs.
LMG MISS ROXIE 3258	LMG GILLS INDEED 8845	
	LMG ROXIE 4037	

ProS	HB	GM	CED	BW	WW	YW	ADG	MILK	ME	HPG	CEM	STAY	MARB	YG	CW	REA	FAT
79	69	11	10	-1.3	69	109	.24	19	4	11	7	17	.19	.16	29	.11	.05
83%	38%	94%	82%	60%	19%	25%	36%	93%	55%	59%	64%	36%	95%	91%	29%	49%	93%

Here is an ET Seneca calf out of a high-producing cow at SRA. If we go to the work of creating an ET calf we have seen great things on all sides of his dam and sire. Another very balanced EPD package.



51 SRA SENECA 544K XGGP

REG: 4609369 DOB: 03/28/22 TAT: 544K BREED: 100% AR

BIEBER ROLLIN DEEP Y118	BIEBER ROOSEVELT W384	ACT BW
RREDS SENECA 731C	BIEBER TILLY 399W	90 lbs.
RREDS ASTER 309A	BECKTON EPIC R397 K	ADJ WW
	MLK CRK ASTER 175	594 lbs.
LSF HERDBUILDER 1058Y	BECKTON EPIC R397 K	ADJ YW
ALRA DESIGN HERD 544C	LSF COVER GIRL S6076 W9037	1064 lbs.
AMBERLIGHT GALATAEYA 905	5L DIRECT DESIGN 893-6315	
	AMBRLIGHT GALATAEYA 162	

ProS	HB	GM	CED	BW	WW	YW	ADG	MILK	ME	HPG	CEM	STAY	MARB	YG	CW	REA	FAT
98	71	27	11	-0.8	67	108	.26	26	8	13	7	18	.30	.14	29	.21	.05
56%	38%	69%	79%	70%	25%	27%	35%	78%	28%	67%	33%	75%	83%	29%	29%	95%	

This Seneca son dam goes back to LSF Herdbuilder which created some outstanding cows. We loved Rolling Deep the sire of Seneca and as you can see in our line up Seneca has taken his place. Another great balanced bull.



52 SRA SHAMELESS 7348BK XGGP

REG: 4615029 DOB: 01/27/22 TAT: 7348BK BREED: 100% AR

WEBR TC CARD SHARK 1015	WEBR DOC HOLIDAY 2N	ACT BW
WEBR SHAMELESS 34G	PFPR MS NYACK 237	87 lbs.
EIR Y200	BIEBER MAKE MIMI 7249	ADJ WW
	EIR W211	640 lbs.
FEDDES BIG SKY R9	BIEBER MAKE MIMI 7249	ADJ YW
AJS 7348B BIG SKY	FEDDES LAKINA 310	1053 lbs.
YCRA KURUBA A65	OLC YOD CHATO S230	
	YCRA KURUBA G33	

ProS	HB	GM	CED	BW	WW	YW	ADG	MILK	ME	HPG	CEM	STAY	MARB	YG	CW	REA	FAT
109	74	35	10	0.4	62	99	.23	26	4	11	7	19	.30	.04	34	.22	.00
22%	13%	56%	86%	86%	47%	49%	37%	46%	33%	42%	19%	30%	80%	53%	12%	36%	31%

A Shameless sired bull calf. Shameless caught our eye at Fort Hays State University when we wanted to start finding some bulls to add gain and growth to our herd. Another bull was created to put on cows and get the job done.



53 KAW SALAZAR 251 XGGP

REG: 4599895 DOB: 01/14/22 TAT: 251 BREED: 100% AR

WEBR TC CARD SHARK 1015	WEBR DOC HOLIDAY 2N	ACT BW
WEBR SHAMELESS 34G	PFPR MS NYACK 237	72 lbs.
EIR Y200	BIEBER MAKE MIMI 7249	ADJ WW
	EIR W211	679 lbs.
KAW RAGNAR 527	PIE CODE RED 9058	ADJ YW
KAW SALLY 842	KAW M26P BECTORIA 963	lbs.
CARAS RACHEL 583	LIMESTONE DARKHORSE U322	
	WERNER MILL IRON RACHEL 7300	

ProS	HB	GM	CED	BW	WW	YW	ADG	MILK	ME	HPG	CEM	STAY	MARB	YG	CW	REA	FAT
117	74	43	13	-1.1	59	99	.25	26	0	12	9	17	.29	.07	35	.19	.01
16%	16%	38%	50%	64%	55%	47%	37%	46%	33%	42%	19%	30%	80%	53%	12%	36%	31%

The performance of Webr Shameless offspring is Phenomenal. This big sided athletic bull carries his hindquarters clear to his hock. He has a front pasture look and is adequate for heifers and recommended for cows.

Consigned by KAW Red Angus





54 KAW CHURCHILL 267 ET

GGP

REG: 4599917 DOB: 03/19/22 TAT: 267 BREED: 100% AR

ROJAS RIOJA 6052
DUFF RED BLOOD 18114
 DUFF JUANADA 927K 15124

C-T RAM TOUGH 441
C-T MISS PAN 0631
 CTDB MISS PAN 227

PZC TMAS FIRESTORM 1800 ET
 SIX MILE LAKOTA 112Y
 RED CROWFOOT OLE'S OSCAR
 O C C JUANADA 927K
 FCC RAMBO 502
 LARSON CRIS 926
 BJR KING SPREAD 035
 CTDB MISS PAN 011

ACT BW
82 lbs.
 ADJ WW
602 lbs.
 ADJ YW
1137 lbs.

ProS	HB	GM	CED	BW	WW	YW	ADG	MILK	ME	HPG	CEM	STAY	MARB	YG	CW	REA	FAT
71	54	17	14	-1.9	49	74	.16	27	-4	11	5	16	.31	.02	10	-.03	.00
83%	54%	88%	27%	49%	86%	88%	89%	34%	18%	63%	82%	41%	75%	28%	91%	83%	22%

This March born son of Duff Red Blood is a flush mate to the top selling heifer in the 2022 KAW maternal magic heifer sale. His donor dam is CT Miss Pan 0631 was lot #1 on Solution Genetics Red Angus dispersal sale. Recommended For heifers and cows.

Consigned by KAW Red Angus



55 SRA ROLLING DEEP 6124K

GGP

REG: 4682499 DOB: 03/03/22 TAT: 6124K BREED: 100% AR

BIEBER ROLLIN DEEP Y118
SRN ALISTAR 1635
 MESSMER LINDA T112

ANDRAS NEW DIRECTION R240
TBS NEW CRYSTAL 6124
 TBS CRYSTAL SUNKING 447

BIEBER ROOSEVELT W384
 BIEBER TILLY 399W
 BECKTON LANCER F442 T
 MESSMER LINDA 2322
 ANDRAS IN FOCUS B152
 ANDRAS KURUBA B111
 LARSON SUN KING 016
 TBS CRYSTAL CANYON 738

ACT BW
80 lbs.
 ADJ WW
575 lbs.
 ADJ YW
1224 lbs.

ProS	HB	GM	CED	BW	WW	YW	ADG	MILK	ME	HPG	CEM	STAY	MARB	YG	CW	REA	FAT
99	56	44	13	-1.3	64	107	.27	24	6	12	8	15	.38	.02	31	.32	.01
39%	48%	38%	38%	61%	38%	28%	19%	69%	67%	24%	29%	59%	27%	26%	21%	15%	40%

A very deep bull offered here that's Grandsire is Bieber Rolling Deep the sire of our old herd bull. His mother goes back to Andras New Direction. This bull has the visual appeal and the gaining traits needed. Moderate BW which gives you another versatile bull option. If you like what you see, his dam is Lot 124 and her calf has the same mating as this bull offered.



56 KAW ALL NIGHT REVIVAL 265 ET

GGP

REG: 4599915 DOB: 03/18/22 TAT: 265 BREED: 100% AR

PIE CODE RED 9058
KAW RAGNAR 527
 KAW M26P BECTORIA 963

WEBR DR. PHIL
KAW KIMMIE 623
 JAG ROSE 806U

VGW GAME PLAN 508
 PIE STORMY 541
 RED FINE LINE MULBERRY 26P
 JAG LANA 516R
 MLK CRK CUB 722
 WEBR MS DOLLY 1L
 LCC CHEYENNE B221L
 LONE ROCK ROSE HVN 9762

ACT BW
70 lbs.
 ADJ WW
610 lbs.
 ADJ YW
1160 lbs.

ProS	HB	GM	CED	BW	WW	YW	ADG	MILK	ME	HPG	CEM	STAY	MARB	YG	CW	REA	FAT
88	62	26	11	-1.0	59	93	.21	27	7	13	8	16	.37	.08	16	-.05	.01
58%	36%	74%	67%	66%	55%	59%	61%	36%	73%	24%	30%	41%	61%	56%	76%	86%	33%

Red Eye Special is a popular national champion Red Angus bull selected Grand Champion Red Angus bull at the NAILE in 2020 and the Cattleman's Congress in 2021. His dam, KAW Kimmie has been a proliferative donor for KAW Red Angus with over 20 offspring in her 6th year of production including 2 sale toppers. This bull is adequate for heifers recommended for cows.

Consigned by KAW Red Angus



57 KAW BLACK EYED SON 246 ET GGP

REG: 4599891 DOB: 01/22/22 TAT: 246 BREED: 100% AR

DAMAR POWER EYE C510
TWG RED EYE SPECIAL 301F
TWG ELTHEA 301D

RED SOO LINE POWER EYE 161X
DAMAR BALLET X222
RED RINGSTEAD KARGO 215U
DAMAR ELTHEA X301
MLK CRK CUB 722
WEBR MS DOLLY 1L
LCC CHEYENNE B221L
LONE ROCK ROSE HVN 9762

ACT BW
78 lbs.
ADJ WW
629 lbs.
ADJ YW
1345 lbs.

WEBR DR. PHIL
KAW KIMMIE 623
JAG ROSE 806U

ProS	HB	GM	CED	BW	WW	YW	ADG	MILK	ME	HPG	CEM	STAY	MARB	YG	CW	REA	FAT
83	54	29	12	-0.4	68	107	.25	28	8	11	7	16	.30	.09	27	.06	.01
67%	54%	67%	60%	77%	24%	28%	37%	27%	77%	61%	45%	48%	77%	63%	34%	65%	37%

Red Eye Special is a popular national champion Red Angus bull selected Grand Champion Red Angus Bull at the NAILE in 2020 and the Cattleman's Congress in 2021. Like all Red Eye Special sons this bull hangs a lot of pounds on a solid frame and undercarriage. KAW Choice 621 is a flush mate to Kaw Kimie a Top Donor at KAW. Adequate for heifers recommended on cows.

Consigned by KAW Red Angus



LOT 57

58 SRA EXC ABSOLUTE 288K GGP

REG: 4609435 DOB: 03/16/22 TAT: 288K BREED: 100% AR

5L GENUINE 1603-195C
LSF EXC ABSOLUTE 9085
LSF SRR DELLA A3170 D6040

5L GENUINE 99-85Y
5L RUBY 21-1603
BROWN PREMIER X7876
LSF SRR DELLA U8077 A3170
5L ADVANTAGE 3267-221Y
5L ROXIE 854-117
HXC CONQUEST 4405P
MFIN MISS LOGAN S30

ACT BW
80 lbs.
ADJ WW
628 lbs.
ADJ YW
1220 lbs.

5L BOURNE 117-48A
LSF SRR FLORA Z2018 F8288
LSF FLORA S30 Z2018

ProS	HB	GM	CED	BW	WW	YW	ADG	MILK	ME	HPG	CEM	STAY	MARB	YG	CW	REA	FAT
100	53	46	14	-3.5	74	111	.23	31	9	14	8	14	.69	.16	28	.08	.04
39%	57%	30%	30%	20%	9%	22%	50%	7%	82%	13%	39%	67%	8%	92%	27%	56%	91%

Here is a great heifer bull sired by Absolute. Sleep all night heifer bull that gives up no gaining traits. His dam is an outstanding 5L Bourne daughter that is a stand-out cow for us.



LOT 58

59 SRA X PORTER 47H GGP

REG: 4649295 DOB: 02/05/22 TAT: 47HK BREED: 100% AR

5L ADVANTAGE 3267-221Y
SRA 5L ADVANTAGE 622H
TLA MISS BELLA PREMIER 622D

BUF CRK THE RIGHT KIND U199
5L ADINA 195-3267
BROWN PREMIER X7876
TLA BELLA 103
BECKTON NEBULA P P707
JYJ MS JOLENE W16
ANDRAS FUSION R236
NCRA MS ABIGRACE U875-592

ACT BW
70 lbs.
ADJ WW
703 lbs.
ADJ YW
1152 lbs.

BROWN JYJ REDEMPTION Y1334
SRA REDEMPTION 47H
NCRA ABIGRACE 592-E47

ProS	HB	GM	CED	BW	WW	YW	ADG	MILK	ME	HPG	CEM	STAY	MARB	YG	CW	REA	FAT
122	66	56	13	-3.2	61	100	.25	22	2	13	8	16	.55	.05	26	.04	.00
37%	83%	9%	8%	6%	49%	41%	32%	58%	46%	35%	8%	92%	13%	71%	32%	54%	63%

A unique light colored heifer bull. Grandsire goes back to 5L Advantage. This bull has stood out all year as something different. Very good visual appeal and just has the look of a heifer bull.



LOT 59

WHICH BULLS ARE GOOD FOR HEIFERS?

EPD	Recommended for Hfs	Acceptable For Hfs	Not for Heifers	BREED AVG
CE Calving Ease	greater than 10	10-12	less than 10	-1.10
BW Birth Weight	less than 1	1-2.5	2.5 or higher	0.12



60 SRA ROLLING DEEP 5518K

GGP

REG: 4615095 DOB: 03/10/22 TAT: 5518K BREED: 100% AR

BIEBER ROLLIN DEEP Y118
SRN ALISTAR 1635
 MESSMER LINDA T112

SANDERSON KING ROLLO 22V
LMG MISS VERDALE 5518
 LUCHT VERDALE 53

BIEBER ROOSEVELT W384
 BIEBER TILLY 399W
 BECKTON LANCER F442 T
 MESSMER LINDA 2322
 5L NORSEMAN KING 2291
 BIEBER FLOWER 9710
 LUCHT ROMEO R052
 LUCHT VERDALE R06

ACT BW
74 lbs.
 ADJ WW
630 lbs.
 ADJ YW
1147 lbs.

ProS	HB	GM	CED	BW	WW	YW	ADG	MILK	ME	HPG	CEM	STAY	MARB	YG	CW	REA	FAT
84	55	29	14	-2.6	58	96	.24	28	6	9	9	16	.26	-0.06	21	.38	.00
72%	57%	70%	32%	37%	60%	53%	43%	25%	63%	91%	14%	50%	86%	7%	66%	12%	17%

Here is a younger bull on the sale that stands out. He is a heifer bull sired by SRN Allistar that weighed 1,160 lbs. on January 25th and his birthdate is March 10, which puts him over 1,300 lbs. as a yearling. Don't sleep on this bull!



61 SRA RAGNAR 7309K

GGP

REG: 4615059 DOB: 02/12/22 TAT: 7309K BREED: 100% AR

PIE CODE RED 9058
KAW RAGNAR 527
 KAW M26P BECTORIA 963

BROWN JY REDEMPTION Y1334
AJS 7309 SRA REDEMP
 JAG LANA 815U

VGW GAME PLAN 508
 PIE STORMY 541
 RED FINE LINE MULBERRY 26P
 JAG LANA 516R
 BECKTON NEBULA P P707
 JY MS JOLENE W16
 BASIN CHEROKEE 2926
 JAG LANA 613S

ACT BW
78 lbs.
 ADJ WW
722 lbs.
 ADJ YW
1290 lbs.

ProS	HB	GM	CED	BW	WW	YW	ADG	MILK	ME	HPG	CEM	STAY	MARB	YG	CW	REA	FAT
95	70	24	13	-2.5	60	93	.21	28	5	13	7	18	.33	.01	18	.07	.00
46%	21%	77%	43%	37%	48%	57%	65%	20%	63%	22%	45%	22%	67%	21%	72%	63%	11%

One of our Final KAW Ragnar sired bull offered. A well-balanced deep ribbed bull out of a Redemption dam. His DAM was a ET calf we put together in 2017. This bull will not disappoint. He is suitable for heifers.



62 SRA ROLLING DEEP 540K

GGP

REG: 4615111 DOB: 03/14/22 TAT: 540K BREED: 100% AR

BIEBER ROLLIN DEEP Y118
SRN ALISTAR 1635
 MESSMER LINDA T112

BIEBER H HUGHES W109
KLEIN FAYE 2212-540K
 PIE FAYE 2212

BIEBER ROOSEVELT W384
 BIEBER TILLY 399W
 BECKTON LANCER F442 T
 MESSMER LINDA 2322
 BASIN HOB0 0545
 BASIN ROSE 06T0
 PIE PRIME TIME 884
 PIE MS FAYE DUKE 509

ACT BW
77 lbs.
 ADJ WW
671 lbs.
 ADJ YW
1297 lbs.

ProS	HB	GM	CED	BW	WW	YW	ADG	MILK	ME	HPG	CEM	STAY	MARB	YG	CW	REA	FAT
95	76	18	13	-1.5	67	103	.22	28	6	10	10	18	.24	-0.08	24	.53	.01
55%	18%	87%	61%	75%	31%	40%	52%	30%	69%	70%	9%	22%	86%	43%	57%	4%	39%

A well-balanced bull out of our Allistar herd sire. He goes back to a Bieber Hughes dam. Another bull that is younger on the sale that stands right with the rest of the bulls. Deep cherry red bull with great movement and disposition. His dam was one of our favorite cows.



63 SRA RAGNAR 34K

REG: 4615085 DOB: 03/01/22 TAT: 34K BREED: 100% AR

PIE CODE RED 9058
KAW RAGNAR 527
 KAW M26P BECTORIA 963

L83 SUPER DUTY 244Z
RED SIX MILE BAYBERRY 439B
 SIX MILE BAYBERRY 15Z

VGW GAME PLAN 508
 PIE STORMY 541
 RED FINE LINE MULBERRY 26P
 JAG LANA 516R
 SIX MILE KING RANCH 721W
 L83 BERTHA 077
 RED SIX MILE WELLINGTON 720W
 SIX MILE BAYBERRY 501U

ACT BW
90 lbs.
 ADJ WW
687 lbs.
 ADJ YW
1261 lbs.

ProS	HB	GM	CED	BW	WW	YW	ADG	MILK	ME	HPG	CEM	STAY	MARB	YG	CW	REA	FAT
67	40	28	9	0.6	68	110	.26	29	9	13	6	14	.35	.05	22	.08	.01
84%	75%	70%	90%	89%	19%	20%	25%	14%	95%	21%	67%	63%	64%	43%	55%	60%	35%

Kaw Ragnar son out of a Red Six Mile Mayberry dam. Very dark red bull with great gaining traits. His dam has produced some of our best heifers in recent years.

64 SRA REFORM 7318K XGGP

REG: 4615101	DOB: 03/12/22	TAT: 7318K	BREED: 100% AR
WEBER REFORM 618 WEBR REFORM 844 WEBR CORNERSTONE 520	BIEBER ROLLIN DEEP Y118 BJF LANA'S EQUAL 8021U WEBR DOC HOLLIDAY 2N PFFR MS NYACK 237	ACT BW 78 lbs.	
BROWN COMPLETE B238 AJS BROWN COMP. 7318 JAG RUBY 318A	LSF TAKEOVER 9943W BROWN MS P707 X7580 JAG BASELINE 018X JAG JULIE 820U	ADJ WW 668 lbs.	ADJ YW 1332 lbs.

ProS	HB	GM	CED	BW	WW	YW	ADG	MILK	ME	HPG	CEM	STAY	MARB	YG	CW	REA	FAT
97	66	32	15	-2.6	60	96	.22	31	3	10	9	17	.39	.08	23	.16	.03
39%	24%	65%	19%	31%	49%	52%	55%	4%	49%	70%	15%	28%	57%	63%	47%	43%	75%

A very well-balanced heifer bull out of our Weber Reform herd bull. His dam is one of our favorite cows out of Brown Complete. She is offered as Lot 115 in the sale due to being late-bred.

65 SRA REFORM 614K XGGP

REG: 4615093	DOB: 03/07/22	TAT: 614K	BREED: 100% AR
WEBER REFORM 618 WEBR REFORM 844 WEBR CORNERSTONE 520	BIEBER ROLLIN DEEP Y118 BJF LANA'S EQUAL 8021U WEBR DOC HOLLIDAY 2N PFFR MS NYACK 237	ACT BW 90 lbs.	
JAG DESIGN 331A GWR RUBY 614 GWR RUBY 309	JAG DESIGN 108Y JAG LANA 815U JAG BASELINE 018X JAG RUBY 110Y	ADJ WW 622 lbs.	ADJ YW 1319 lbs.

ProS	HB	GM	CED	BW	WW	YW	ADG	MILK	ME	HPG	CEM	STAY	MARB	YG	CW	REA	FAT
89	75	14	11	-0.6	60	93	.21	29	2	10	5	20	.16	.04	24	.17	.01
49%	10%	92%	65%	70%	53%	57%	62%	12%	45%	77%	85%	2%	97%	37%	47%	40%	39%

The last Weber Reform bull on the sale. Again, younger bull on the sale but goes right with the group. Balanced EPDs.

66 SRA PROFITBUILDER 606K XGGP

REG: 4609379	DOB: 03/23/22	TAT: 606K	BREED: 100% AR
LSF TAKEOVER 9943W H2R PROFITBUILDER B403 BROWN MS P707 Y6674	HXC CONQUEST 4405P LSF WIDELOAD R5014 U8061 BECKTON NEBULA P P707 BROWN MS MISSION STMT T6963	ACT BW 80 lbs.	
ANDRAS NEW DIRECTION R240 ECCO VAQUERO DIRECTION 606D AMBERLIGHT 915	ANDRAS IN FOCUS B152 ANDRAS KURUBA B111 AMBERLIGHT VAQUERO 644 AMBERLIGHT MAJORETTE 619	ADJ WW 618 lbs.	ADJ YW 1140 lbs.

ProS	HB	GM	CED	BW	WW	YW	ADG	MILK	ME	HPG	CEM	STAY	MARB	YG	CW	REA	FAT
97	44	53	14	-3.8	70	115	.28	24	7	14	8	12	.61	.17	33	.03	.03
43%	72%	21%	29%	17%	17%	15%	16%	63%	74%	10%	36%	82%	14%	94%	17%	72%	79%

The last red angus bull on the offering that may be one of the best. Another sleep-all-night heifer bull with top 20% EPD in all gaining categories. A very versatile bull sired by H2R Profit Builder B403 that will get the job done. A younger bull that was brought in the lineup late due to how he continues to excel in his growth.

66B SRA SENECA 429K XGGP

REG: 4609443	DOB: 01/23/22	TAT: 429K	BREED: 100% AR
BIEBER ROLLIN DEEP Y118 RREDS SENECA 731C RREDS ASTER 309A	BIEBER ROOSEVELT W384 BIEBER TILLY 399W BECKTON EPIC R397 K MLK CRK ASTER 175	ACT BW 77 lbs.	
H2R PROFITBUILDER B403 LSF SRR DORY JIBA 0173 F8429 SRR DORY JIBA 0173-440	LSF TAKEOVER 9943W BROWN MS P707 Y6674 BASIN DATELINE 5955 BR SRR DORY JIBA 440-784	ADJ WW 580 lbs.	ADJ YW 1119 lbs.

ProS	HB	GM	CED	BW	WW	YW	ADG	MILK	ME	HPG	CEM	STAY	MARB	YG	CW	REA	FAT
74	71	2	14	-3.7	60	96	.23	22	5	17	9	15	.26	.16	12	.05	.06
79%	20%	98%	35%	18%	53%	53%	51%	80%	61%	2%	13%	53%	86%	91%	87%	67%	99%

Another outstanding Seneca Heifer bull that has great growth numbers. His DAM is sired by H2R Profit builder which was also the sire to the lot 66 bull. Another bull with versatile options for your herd. Recommended for heifers

This sale will be broadcast live on the internet.

DVAuction

Broadcasting Real-Time Auctions

Real time bidding & proxy bidding available.

SIMMENTAL *Bulls*

67 SRA ALL ABOARD SIMMY 705K

REG: 4609411	DOB: 03/30/22	TAT: 705K	BREED: 49.9% AR 48.4% SM 1.7% XX
WS ALL-AROUND Z35 WS ALL ABOARD B80 WS LITTLE SISTER W37	WS BEEF KING W107 CDI MS HIGH ROLLER 39W HOOKS SHEAR FORCE 38K DCR MS RIBEYE N72	ACT BW 92 lbs.	
BROWN JY REDEMPTION Y1334 ECCO REDEMPTION 705E AMBERLIGHT ESCADA 575	BECKTON NEBULA P P707 JYJ MS JOLENE W16 AMBERLIGHT SAKIC 219 AMBERLIGHT FATTONY 326	ADJ WW 692 lbs.	ADJ YW 1299 lbs.

ProS	HB	GM	CED	BW	WW	YW	ADG	MILK	ME	HPG	CEM	STAY	MARB	YG	CW	REA	FAT
91	30	61	14	-2.2	83	130	.29	23	4	13	7	9	.44	-.21	38	.70	-.04
31%	75%	11%	37%	43%	1%	3%	10%	81%	58%	19%	45%	88%	40%	1%	7%	1%	1%

We are moving towards a few red Simmental bulls every year. This is one of two on the offering. Sired by the very popular WS ALL ABOARD. This half-blood checks all the boxes top 10% in ADG, WW, YW, and top 1% in the entire breed in YG, REA, and FAT. A very well-balanced bull that will add frame and pounds to your herd. He will be an excellent steer maker! Suitable for heifers!



LOT 67



68 W-C MR IMPERIAL K056

REG: 4080673	DOB: 01/17/22	TAT: K056	BREED: 1/2 SM 1/2 AR
IR IMPERIAL D948 BAR CK RED EMPIRE 9153G WS MISS NORTHSTAR B180	IR IMPERIAL B772 IR MS DUAL FOCUS W086 CDJ VERDICT 220Y WS TAMAR Z179	ACT BW 80 lbs.	
3SCC DOMAIN A163 SRA DOMAIN 056 POKE MS SHINE 9197 4116	BECTION BOMINOR T122 Z 1 3SCC EUCLA X723 RED CROWFOOT MOONSHINE 8081U HLH LADY LANCE 6068 9197	ADJ WW 727 lbs.	ADJ YW -

CE	BW	WW	YW	ADG	MCE	MILK	MWW	STAY	DOC	CW	YG	MARB	BF	REA	API	TI
11	-0.5	66.4	97.1	.19	5	18.7	51.9	17.7	11.9	12.4	.04	.22	.009	-.01	115.6	71.4
70%	40%	85%	90%	95%	80%	90%	95%	25%	55%	99%	75%	99%	99%	99%	80%	80%

Our final half-blood Simmental bull. He is out of a heifer we sold on our 2021 sale that has great visual appeal and structure. He is sired by Red Empire which may be the most used red Simmental bull in 2023 which speaks volumes. If you're after growth this guy checks all the boxes.

PUREBRED ANGUS *Bulls*



69 SRA SITZ RESILIENT 227K

REG: 20519017	DOB: 01/11/22	TAT: 227K	BREED: PB ANGUS
SITZ STELLAR 726D SITZ RESILIENT 10208 SITZ MISS BURGESS 1856	MOHNEN SUBSTANTIAL 272 SITZ PRIDE 200B SITZ TOP GAME 561X SITZ MISS BURGESS 4381	ACT BW 79 lbs.	
S A V RENOWN 3439 BROOKDALE ENCHANTRESS 27 BROOKDALE ENCHANTRESS 954	RITO 707 OF IDEAL 3407 7075 S A V BLACKCAP MAY 4136 S A V PRIORITY 7283 ENCHANTRESS OF PR 570-2	ADJ WW 710 lbs.	ADJ YW 1280 lbs.

CED	BW	WW	YW	RADG	CEM	MILK	MW	DOC	CW	MARB	RE	FAT	\$M	\$W	\$B	\$C
1+8	1+4	1+70	1+122	1+25	1+8	1+24	1+56	1+20	1+38	1+38	1+53	1+.025	79	69	113	226
35%	30%	25%	30%	50%	55%	70%	60%	45%	75%	75%	65%	70%	15%	20%	85%	70%

We continue to bring some registered Angus bulls to the sale for our customers. This bull may be the best bull of the day overall. A deep long bodied Sitz Resilient son that checks all the boxes phenotypically and structurally. He is full of rib and power. He weighed in at 1,265 lbs. Before his yearling date. His dam has been a standout since we acquired her. He is top 30% in WW, YW, and BW. We have flushed his dam due to her showing us what she can do with this bull. If you want visual appeal, you got it all day every day with this bull. Suitable for heifers!



70 SRA SITZ RESILIENT 1628K

REG: 20518847	DOB: 01/27/22	TAT: 1628K	BREED: PB ANGUS
SITZ STELLAR 726D SITZ RESILIENT 10208 SITZ MISS BURGESS 1856	MOHNEN SUBSTANTIAL 272 SITZ PRIDE 200B SITZ TOP GAME 561X SITZ MISS BURGESS 4381	ACT BW 76 lbs.	
HA COWBOY UP 5405 BROOKDALE PROGRESS 1628 BROOKDALE PROGRESS 371	HA OUTSIDE 3008 HA BLACKCAP LADY 1602 SITZ UPWARD 307R BROOKDALE PROGRESS 422	ADJ WW 710 lbs.	ADJ YW 1260 lbs.

CED	BW	WW	YW	RADG	CEM	MILK	MW	DOC	CW	MARB	RE	FAT	\$M	\$W	\$B	\$C
8	1.2	74	132	1+.28	6	26	1+65	1+15	1+45	1+.53	1+.53	1+.008	76	66	130	245
35%	50%	15%	15%	30%	75%	50%	50%	65%	60%	65%	70%	50%	15%	25%	65%	50%

Another Sitz Resilient Son ready to go to work on cows. This bull is full of power and depth. He is in the top 15% in YW and WW. The first two Angus bulls are full of power and maternal traits for you to add to your herd!

71 SRA RESILIENT 103K

REG: Pending DOB: 01/15/22 TAT: 103K BREED: PB ANGUS

SITZ STELLAR 726D	MOHNEN SUBSTANTIAL 272	ACT BW
SITZ RESILIENT 10208	SITZ PRIDE 200B	84 lbs.
SITZ MISS BURGESS 1856	SITZ TOP GAME 561X	ADJ WW
	SITZ MISS BURGESS 4381	650 lbs.
HFA BATMAN L35B	BROOKDALE UPTOWN	ADJ YW
BROOKDALE JODIE 916	SOO LINE GEORGINA 1148	1120 lbs.
BROOKDALE JODIE 33	S A V FINAL ANSWER 0035	
	BROOKDALE JODIE 251	

CED	BW	WW	YW	RADG	DMI	YH	SC	HP	CEM	MILK
9	0.75	72	121.5	.23	1.21	.7	1.27	15.2	10.5	25.5
28%	40%	18%	25%	58%	74%	30%	25%	16%	35%	53%

Lot 71-74 are full brother products of our Embryo Transfer program. Brookdale Jodie 916 is our Angus donor cow who checks all the boxes. We think she may be the best cow on the place. We flushed her to Sitz Resilient who was one of the hottest Angus bull this past year. These four guys prove our decision made sense. Take your pick all these guys will be great herd sires. These bulls are suitable for heifers.



72 SRA RESILIENT 135K

REG: Pending DOB: 02/20/22 TAT: 135K BREED: PB ANGUS

SITZ STELLAR 726D	MOHNEN SUBSTANTIAL 272	ACT BW
SITZ RESILIENT 10208	SITZ PRIDE 200B	79 lbs.
SITZ MISS BURGESS 1856	SITZ TOP GAME 561X	ADJ WW
	SITZ MISS BURGESS 4381	640 lbs.
HFA BATMAN L35B	BROOKDALE UPTOWN	ADJ YW
BROOKDALE JODIE 916	SOO LINE GEORGINA 1148	1095 lbs.
BROOKDALE JODIE 33	S A V FINAL ANSWER 0035	
	BROOKDALE JODIE 251	

CED	BW	WW	YW	RADG	DMI	YH	SC	HP	CEM	MILK
9	0.75	72	121.5	.23	1.21	.7	1.27	15.2	10.5	25.5
28%	40%	18%	25%	58%	74%	30%	25%	16%	35%	53%



73 SRA RESILIENT 109K

REG: Pending DOB: 02/20/22 TAT: 109K BREED: PB ANGUS

SITZ STELLAR 726D	MOHNEN SUBSTANTIAL 272	ACT BW
SITZ RESILIENT 10208	SITZ PRIDE 200B	84 lbs.
SITZ MISS BURGESS 1856	SITZ TOP GAME 561X	ADJ WW
	SITZ MISS BURGESS 4381	615 lbs.
HFA BATMAN L35B	BROOKDALE UPTOWN	ADJ YW
BROOKDALE JODIE 916	SOO LINE GEORGINA 1148	1045 lbs.
BROOKDALE JODIE 33	S A V FINAL ANSWER 0035	
	BROOKDALE JODIE 251	

CED	BW	WW	YW	RADG	DMI	YH	SC	HP	CEM	MILK
9	0.75	72	121.5	.23	1.21	.7	1.27	15.2	10.5	25.5
28%	40%	18%	25%	58%	74%	30%	25%	16%	35%	53%



74 SRA RESILIENT 138K

REG: Pending DOB: 02/26/22 TAT: 138K BREED: PB ANGUS

SITZ STELLAR 726D	MOHNEN SUBSTANTIAL 272	ACT BW
SITZ RESILIENT 10208	SITZ PRIDE 200B	86 lbs.
SITZ MISS BURGESS 1856	SITZ TOP GAME 561X	ADJ WW
	SITZ MISS BURGESS 4381	645 lbs.
HFA BATMAN L35B	BROOKDALE UPTOWN	ADJ YW
BROOKDALE JODIE 916	SOO LINE GEORGINA 1148	1125 lbs.
BROOKDALE JODIE 33	S A V FINAL ANSWER 0035	
	BROOKDALE JODIE 251	

CED	BW	WW	YW	RADG	DMI	YH	SC	HP	CEM	MILK
9	0.75	72	121.5	.23	1.21	.7	1.27	15.2	10.5	25.5
28%	40%	18%	25%	58%	74%	30%	25%	16%	35%	53%





WFY
WEHRS FEED YARD

Wehrs Feed yard is a sponsor of the 2023 SRA Sale. We are a 4,000 head capacity feed yard in Milford, Nebraska. We pride ourself on a clean very tight ran operation. We invite any SRA customer to visit with us about backgrounding or finishing your cattle. We enjoy working with people who are in it day to day like us. We treat your cattle like our own. Examples would be bedding down the calves in a feed yard when winter gets tough and conditions are not ideal. We can put the weight on your calves fast and get them to the sale weight you desire with balanced rations from our nutritional team. We have fed and prepared the purebred cattle that are on the sale offering today over the last six months.

Contact us today about feeding your calves!
Austin Schweitzer: 402-641-8275

Sponsor



Open Heifers

We are offering up 40 open heifers from the heart of our herd. We hold back 20-30 each year to keep our program moving in the right direction, but we can't keep them all. Here is your opportunity to own some outstanding registered heifers. The new owners of heifer lots 75-90 have an option to partner with SRA in the 2025 Sale. If any of these heifers have a bull calf in 2024 (from Artificial insemination or they are naturally bred by an SRA bull) the new owner can place that bull on the SRA bull test. SRA would develop the bull from weaning until sale time.



Project Pink Inc.

Many of us have had breast cancer in our family or close to home. We have had some customers go through this uphill battle in 2022-2023. All open heifers wear a Pink tag to support this Omaha Breast Cancer Foundation that helps out local women battling breast cancer. \$50 from each open heifer sold at the sale will be donated to Project Pink' Inc this year. Thank you for your support in this!





75 SRA HXC DECLARATION 5102K

REG: 4614979 DOB: 01/06/22 TAT: 5102K BREED: 100% AR

LEACHMAN PLEDGE A282Z
HXC DECLARATION 5504C
 HXC190Y

231 PIE
RRA MISS EXCEL 188 5102
 RRA MISS EXCEL 409 188

LSF NEXTPECTION 0083X
 LCOC ZARA TG004
 BECKTON NEBULA P P707
 HXC ELLIE MAY MA638
 RED LAZY MC REDMAN 20X
 PIE STORMY 0244
 RRA LAMONI 716
 RRA MISS EXCEL 409

ProS	HB	GM	CED	BW	WW	YW	ADG	MILK	ME	HPG	CEM	STAY	MARB	YG	CW	REA	FAT
62	21	41	12	-2.1	47	89	.26	20	9	13	6	11	.32	.08	21	-.07	-.00
91%	96%	43%	85%	44%	89%	68%	27%	93%	83%	22%	64%	89%	73%	60%	60%	88%	19%

This HXC Declaration heifer needs a show halter. Great eye appeal, movement, and is sound all the way through.



76 SRA HXC DECLARATION 6103K

REG: 4615031 DOB: 01/27/22 TAT: 6103K BREED: 100% AR

LEACHMAN PLEDGE A282Z
HXC DECLARATION 5504C
 HXC190Y

BHR CODE RED 2143
TBS RED BANDI 6103
 TBS MS BANDO CANYON 380

LSF NEXTPECTION 0083X
 LCOC ZARA TG004
 BECKTON NEBULA P P707
 HXC ELLIE MAY MA638
 PIE CODE RED 9058
 MISS BHR PRINCESS 53
 HAYCOW BANDO 1145
 TBS MS CANYON CHIEF 107

ProS	HB	GM	CED	BW	WW	YW	ADG	MILK	ME	HPG	CEM	STAY	MARB	YG	CW	REA	FAT
70	23	47	10	1.0	73	119	.29	22	14	12	5	12	.44	.06	34	.05	-.01
84%	95%	31%	85%	92%	11%	10%	12%	79%	97%	34%	82%	83%	43%	47%	14%	68%	4%

Another HXC Declaration show heifer prospect. She has a great set of EPDs to line up a very successful 2023 calf.



77 SRA RED BLOOD 7503K

REG: 4614989 DOB: 01/11/22 TAT: 7503K BREED: 99.9% AR 0.1% XX

ROJAS RIOJA 6052
DUFF RED BLOOD 18114
 DUFF JUANADA 927K 15124

TROTTERS STRONGHOLD 156
AJS SRA STONGHOLD 7503
 GWR RUBY 503

PZC TMAS FIRESTORM 1800 ET
 SIX MILE LAKOTA 112Y
 RED CROWFOOT OLE'S OSCAR
 O C C JUANADA 927K
 LJT CITADEL 812
 LJT PEARL 579
 SCHULER ENVOY 2115Z
 JAG RUBY 123Y

ProS	HB	GM	CED	BW	WW	YW	ADG	MILK	ME	HPG	CEM	STAY	MARB	YG	CW	REA	FAT
91	57	34	17	-3.0	59	86	.17	26	-2	11	8	15	.56	-.05	13	.19	.00
52%	45%	57%	7%	28%	55%	73%	86%	45%	23%	54%	26%	60%	21%	7%	84%	37%	9%

Here is the lone Red Blood Heifer on the sale. Her profile picture screams brood cow performance and that is what she will be. Her dam is one of our top 10 cows and we already have three of her heifers in the herd.



78 SRA DOMAIN 733K

REG: 4609413 DOB: 03/19/22 TAT: 733K BREED: 100% AR

BECKTON DOMINOR T122 Z1
3SCC DOMAIN A163
 3SCC EUCLA X723

FEDDES OSCAR X28
ECCO MISS OSCAR 733E
 ALRA MAJOR SAKETTE 572C

BECKTON DOMINOR Z1 R610
 BKT LARKABEL R038 WA
 BASIN HOBO 0545
 BSKF EUCLA U278
 RED CROWFOOT OLE'S OSCAR
 FEDDES SLEEK 806
 AMBERLIGHT SAKI 219
 AMBERLIGHT MAJORETTE 626

ProS	HB	GM	CED	BW	WW	YW	ADG	MILK	ME	HPG	CEM	STAY	MARB	YG	CW	REA	FAT
103	56	47	15	-2.5	58	96	.24	27	3	10	6	18	.56	.19	26	-.06	.04
32%	47%	31%	21%	37%	61%	53%	43%	40%	51%	79%	77%	19%	21%	97%	38%	88%	89%

A beautiful Domain heifer. Great depth of rib and over stature. This heifer is really sound on her feet. Her dam is a sired by Feddes Oscar and is one of our favorites.

79 SRA HXC CHARTER 153K

REG: 4609431 DOB: 01/15/22 TAT: 153K BREED: 100% AR

SPUR FRANCHISE OF GARTON
HXC CHARTER 6610D
HXC 111Y

SPUR FRANCHISE 7070
H & I RENE LASS 0135
BECKTON NEBULA P P707
HXC JAYLO LB136

5L BOURNE 117-48A
LSF SRR VCT JOAN C5341 F8153
LSF SRR VICTORA JOAN C5341

5L ADVANTAGE 3267-221Y
5L ROXIE 854-117
HXC CONQUEST 4405P
SRR VICTORA JOAN 675-711

ProS	HB	GM	CED	BW	WW	YW	ADG	MILK	ME	HPG	CEM	STAY	MARB	YG	CW	REA	FAT
140	64	77	14	-4.4	60	100	.26	31	3	14	8	16	.79	.07	35	.30	.02
3%	32%	3%	30%	11%	54%	43%	30%	10%	51%	16%	31%	47%	3%	54%	12%	18%	64%

An outstanding HXC Charter heifer that has a pedigree makeup to develop a great heifer bull. Her pedigree is an example of what I would use to breed to develop a bull that works on heifers but will not be giving up gaining traits.



80 SRA SCENECA 613K ET

REG: 4614965 DOB: 01/31/22 TAT: 613K BREED: 100% AR

BIEBER ROLLIN DEEP Y118
RREDS SENECA 731C
RREDS ASTER 309A

BIEBER ROOSEVELT W384
BIEBER TILLY 399W
BECKTON EPIC R397 K
MLK CRK ASTER 175

LMG GILLS INDEED 8845
LMG ROXIE 5715
LMG MISS ROXIE 3258

RED TOWAW INDEED 104H
LMG DYNETTE 3041
LMG GILLS INDEED 8845
LMG ROXIE 4037

ProS	HB	GM	CED	BW	WW	YW	ADG	MILK	ME	HPG	CEM	STAY	MARB	YG	CW	REA	FAT
79	68	11	10	-1.2	70	109	.24	19	4	11	7	17	.20	.16	29	.11	.04
72%	24%	94%	81%	63%	18%	26%	39%	95%	55%	59%	55%	22%	94%	91%	29%	54%	93%

Here is a stout ET Seneca Heifer that will produce power bulls. She will transfer with half a profile due to her granddam not having DNA when we flushed this cow.



81 SRA MERLIN 502K

REG: 4615033 DOB: 01/27/22 TAT: 502K BREED: 100% AR

LJC MERLIN T179
WFL MERLIN 018A
WFL COMMITMENT 042Y

LJC MISSION STATEMENT P27
BUF CRK REDPRIDE N179
BROWN COMMITMENT S7206
WFL JEWELMAKER 9024

C-BAR ANTICIPATION 101W
GWR RUBIE 502
GWR RUBIE 301

RED CROWFOOT OLE'S OSCAR
BROWN MS ABIGRAE L7730
GWR GP MR. RIGHT 013
KAW CHY'S RUBIE

ProS	HB	GM	CED	BW	WW	YW	ADG	MILK	ME	HPG	CEM	STAY	MARB	YG	CW	REA	FAT
98	44	54	13	-2.0	78	120	.27	33	1	9	7	13	.56	-.09	25	.36	-.02
41%	70%	20%	39%	47%	5%	9%	23%	4%	39%	84%	44%	78%	21%	4%	44%	12%	3%

You have seen the power set of Merlin bulls we are offering on this sale. Here is an example of what happens when we're breeding for bulls and end up with a heifer. This deep cherry red Merlin daughter will be a pasture favorite.



82 SRA FUSION 8144K

REG: 4615061 DOB: 02/13/22 TAT: 8144K BREED: 100% AR

ANDRAS IN FOCUS B175
ANDRAS FUSION R236
ANDRAS BELLE B167

MYTTY IN FOCUS
DI ESTONIA 316
ANDRAS THUNDER B105
ANDRAS BELLE 416

RRA LOGISTICS 227
RRA RUBY 8002 8144
LACY RUBY 8002

HXC CONQUEST 4405P
RRA RACHEL 246 746
5L SIGNATURE 5615
LACY LARKISA 122M

ProS	HB	GM	CED	BW	WW	YW	ADG	MILK	ME	HPG	CEM	STAY	MARB	YG	CW	REA	FAT
80	44	37	14	-2.3	47	78	.20	28	1	8	14	14	.54	.09	10	-.19	.01
70%	71%	53%	36%	41%	89%	84%	73%	30%	35%	95%	21%	64%	24%	65%	91%	97%	31%

Here is a cherry red Fusion heifer on the offering. She will have a very moderate frame like her mother.





LOT 83

83 SRA FUSION 24K

REG: 4615097 DOB: 03/10/22 TAT: 24K BREED: 100% AR

ANDRAS IN FOCUS B175
ANDRAS FUSION R236
 ANDRAS BELLE B167

MYTTY IN FOCUS
 DI ESTONIA 316
 ANDRAS THUNDER B105
 ANDRAS BELLE 416

SHADYS BONNE LEAGUE 9922
SHADYS ENT LEAGUE Z8655
 SHADYS CHAT ENTERPRI 8655

LCOC MAJOR LEAGUE A021P
 CRF BONNEBELL 922
 LSF ENTERPRISE 6104S
 SHADY'S MS CHATEAU 655

ProS	HB	GM	CED	BW	WW	YW	ADG	MILK	ME	HPG	CEM	STAY	MARB	YG	CW	REA	FAT
100	47	52	14	-1.0	63	107	.28	29	11	8	9	16	.53	.06	27	.15	.01
38%	65%	22%	34%	67%	42%	28%	17%	19%	89%	96%	12%	45%	25%	46%	33%	46%	35%

Another Great Fusion daughter that is a little younger. Her mother was a Donor at Shay Bottom Red Angus for many years. She may be a future donor candidate.



LOT 84

84 SRA 5L GENUINE 114K

REG: 4609401 DOB: 02/14/22 TAT: 114K BREED: 100% AR

5L GENUINE 99-85Y
5L GENUINE 1603-195C
 5L RUBY 21-1603

BUF CRK THE RIGHT KIND U199
 5L MARTA 817-99
 5L CRAFTSMAN 1134-150X
 5L FIREFLY 679-21

LSF SRR IMPECCABLE 3150A
LSF SRR JOAN C5345 E7114
 LSF SRR JOAN C5345

LSF SAGA 1040Y
 LSF CRYSTAL W9231 Y1019
 HXC CONQUEST 4405P
 SRR JOAN 8050-4022

ProS	HB	GM	CED	BW	WW	YW	ADG	MILK	ME	HPG	CEM	STAY	MARB	YG	CW	REA	FAT
90	39	51	14	-2.5	70	112	.26	33	8	11	10	11	.65	.14	31	.07	.03
54%	78%	24%	27%	37%	17%	19%	26%	3%	79%	48%	5%	88%	11%	87%	22%	63%	74%

A 5L Genuine daughter that has one of the top EPD profiles on the sale. You can breed her in any direction you want to. She also screams brood cow and longevity when you get to watch her move in person.



LOT 85

85 SRA SHAMELESS 66K

REG: 4615035 DOB: 01/27/22 TAT: 66K BREED: 100% AR

WEBR TC CARD SHARK 1015
WEBR SHAMELESS 34G
 EIR Y200

WEBR DOC HOLLIDAY 2N
 PFRR MS NYACK 237
 BIEBER MAKE MIMI 7249
 EIR W211

BECKTON EPIC R397 K
TBS SEN EPIC 66
 TBS MS SEN CANYON 828

BECKTON EPIC K F075
 BECKTON KIT F468 JL
 3SCC SENSATION R289
 TBS MS CANYON 695

ProS	HB	GM	CED	BW	WW	YW	ADG	MILK	ME	HPG	CEM	STAY	MARB	YG	CW	REA	FAT
119	80	39	11	-1.0	56	93	.23	26	2	12	8	19	.25	.11	33	.15	.02
14%	9%	48%	73%	67%	67%	60%	50%	50%	42%	41%	39%	9%	88%	75%	16%	46%	62%

Here is a big-bodied Shameless heifer that will throw out progeny that will perform. A lot of Shameless calves in the show ring this past summer.



LOT 86

86 SRA HXC DECLARATION 782K

REG: 4615021 DOB: 01/23/22 TAT: 782K BREED: 100% AR

LEACHMAN PLEDGE A282Z
HXC DECLARATION 5504C
 HXC190Y

LSF NEXTPECTION 0083X
 LCOC ZARA T6004
 BECKTON NEBULA P P707
 HXC ELLIE MAY MA638

LSF SAGA 1040Y
RRA MELODY 1104 782
 RRA MELODY 7008 1104

BECKTON EPIC R397 K
 LSF MINOLA T7172 W9041
 BADLANDS LOADED 78W
 RRA MELODY 4002 7008

ProS	HB	GM	CED	BW	WW	YW	ADG	MILK	ME	HPG	CEM	STAY	MARB	YG	CW	REA	FAT
53	-2	55	7	2.4	83	142	.37	20	19	13	3	10	.33	.12	46	.11	.00
96%	99%	18%	97%	98%	2%	1%	1%	91%	99%	25%	98%	95%	70%	81%	2%	54%	19%

This HXC Declaration daughter has the most breeding opportunity of the entire group. She is in the top 2% in ADG, YW, and WW. Take a sire that has a strong BW EPD with good gaining traits and you will have an excellent mating displayed in the calves.

87 SRA 9 MILE FRANCHISE 902K

REG: 4609469 DOB: 03/25/22 TAT: 902K BREED: 100% AR

SPUR FRANCHISE OF GARTON
9 MILE FRANCHISE 6305
 C-BAR ABIGRACE Y11

SPUR FRANCHISE 7070
 H & H IRENE LASS 0135
 TR COLT 45 UT806
 C-BAR & BROWN ABIGRACE T712

BROWN JYJ REDEMPTION Y1334
ECCO 9026
 ALRA NO EQUAL MOVADO 540C

BECKTON NEBULA P P707
 JYJ MS JOLENE W16
 LCHMN NO EQUAL 1174D
 AMBERLIGHT MOVADO 361

ProS	HB	GM	CED	BW	WW	YW	ADG	MILK	ME	HPG	CEM	STAY	MARB	YG	CW	REA	FAT
129	71	57	15	-5.0	58	103	.28	32	5	11	10	17	.53	.08	32	.25	.03
7%	19%	16%	16%	6%	59%	38%	17%	6%	59%	60%	4%	27%	25%	58%	18%	26%	67%

Here is a late March 9 Mile Franchise banger. She has great BW EPD and her offspring has the chance to be very versatile. A lot of nice 9 Mile bulls offered and here is your chance at a heifer.

89 SRA LSF MAXIMUM 246K

REG: 4609399 DOB: 03/09/22 TAT: 246K BREED: 100% AR

5L BOURNE 117-48A
LSF SRR MAXIMUM 7410E
 LSF DINA T7103 Y1079

5L ADVANTAGE 3267-221Y
 5L ROXIE 854-117
 BASIN EXT 5233
 LSF DINA N3114 T7103

5L BOURNE 117-48A
LSF SRR ROBIN C5249 E7245
 LSF SRR ROBIN C5249

5L ADVANTAGE 3267-221Y
 5L ROXIE 854-117
 HXC GALAXY 3015A
 LSF ROBIN T7072 X0047

ProS	HB	GM	CED	BW	WW	YW	ADG	MILK	ME	HPG	CEM	STAY	MARB	YG	CW	REA	FAT
114	62	52	15	-4.5	65	106	.26	24	7	16	9	14	.59	.21	32	.04	.05
19%	36%	23%	18%	10%	32%	30%	30%	70%	76%	2%	11%	67%	17%	98%	18%	70%	96%

Here is an LSF Maximum Daughter that not only screams visual appeal but has that set of EPDs to go with it. One of the most balanced set of EPDs on the sale.

91 SRA SENECA 8667K

REG: 4615047 DOB: 01/31/22 TAT: 8667K BREED: 100% AR

BIEBER ROLLIN DEEP Y118
RREDS SENECA 731C
 RREDS ASTER 309A

BIEBER ROOSEVELT W384
 BIEBER TILLY 399W
 BECKTON EPIC R397 K
 MLK CRK ASTER 175

FEDDES SHOOTER A76-D243
SRA REDEMPTION 8667
 TBS SENSATION 667

PIE SHOOTER 8012
 FEDDES LAKINA 453 A76
 PRESSER'S COVENANT 4037
 TBS MS CO SENSATION 799

ProS	HB	GM	CED	BW	WW	YW	ADG	MILK	ME	HPG	CEM	STAY	MARB	YG	CW	REA	FAT
87	64	23	10	-0.9	69	113	.27	24	7	11	6	18	.22	.14	30	.21	.05
60%	32%	80%	85%	68%	19%	18%	20%	70%	72%	65%	70%	19%	92%	88%	26%	32%	96%

This Seneca daughter is the deepest in the group. She was having a bad day a didn't want to give us a picture, so you will want to watch her video closely. She has great traits for gain and her mother is sired by Redemption. An all-star pedigree with performance that will yield success in her future calves.

92 SRA SENECA 7305K ET

REG: 4614969 DOB: 01/30/22 TAT: 7305K BREED: 100% AR

BIEBER ROLLIN DEEP Y118
RREDS SENECA 731C
 RREDS ASTER 309A

BIEBER ROOSEVELT W384
 BIEBER TILLY 399W
 BECKTON EPIC R397 K
 MLK CRK ASTER 175

LMG GILLS INDEED 8845
LMG ROXIE 5715
 LMG MISS ROXIE 3258

RED TOWAW INDEED 104H
 LMG DYNETTE 3041
 LMG GILLS INDEED 8845
 LMG ROXIE 4037

ProS	HB	GM	CED	BW	WW	YW	ADG	MILK	ME	HPG	CEM	STAY	MARB	YG	CW	REA	FAT
79	68	11	10	-1.2	70	109	.24	19	4	11	7	17	.20	.16	29	.11	.04
72%	24%	94%	81%	63%	18%	26%	39%	95%	55%	59%	55%	22%	94%	91%	29%	54%	93%

Another Seneca ET heifer that is a full sister to Lot 80 and will transfer the same way. Going to be a moderately framed cow that will produce calves that perform.

88 SRA HXC DECLARATION 720K

REG: 4609407 DOB: 03/25/22 TAT: 720K BREED: 100% AR

LEACHMAN PLEDGE A282Z
HXC DECLARATION 5504C
 HXC190Y

LSF NEXTPEGTATION 0083X
 LCOC ZARA T6004
 BECKTON NEBULA P P707
 HXC ELLIE MAY MA638

ANDRAS NEW DIRECTION R240
ECCO DIRECT 720E
 AMBERLIGHT 166

ANDRAS IN FOCUS B152
 ANDRAS KURUBA B111
 LARSON MEDALIST 730
 AMBERLIGHT 913

ProS	HB	GM	CED	BW	WW	YW	ADG	MILK	ME	HPG	CEM	STAY	MARB	YG	CW	REA	FAT
63	4	59	9	2.3	76	129	.33	19	14	14	4	9	.49	.10	40	.07	.00
91%	99%	14%	93%	98%	7%	3%	2%	94%	96%	14%	95%	97%	33%	71%	5%	63%	14%

The last HXC Declaration heifer in the offering. Another outstanding pedigree with all gaining traits in the top 10% of the breed.

90 SRA SHAMELESS 884K

REG: 4649305 DOB: 01/30/22 TAT: 884K BREED: 100% AR

WEBR TC CARD SHARK 1015
WEBR SHAMELESS 34G
 EIR Y200

WEBR DOC HOLLIDAY 2N
 PFFR MS NYACK 237
 BIEBER MAKE MIMI 7249
 EIR W211

PIE ENHANCER 337
PIE RUBY 5174
 PIE RUBY 9106

LSF SAGA 1040Y
 PIE POLLY 124
 LCB HOSS A444N
 PIE M.S. CADSAM 8192

ProS	HB	GM	CED	BW	WW	YW	ADG	MILK	ME	HPG	CEM	STAY	MARB	YG	CW	REA	FAT
113	76	37	12	-1.9	57	93	.23	28	2	9	6	21	.28	.12	33	.07	.02
20%	14%	51%	63%	49%	65%	59%	51%	28%	42%	91%	79%	2%	82%	81%	17%	63%	53%

The last Shameless heifer on the offering. Her dam has been a great cow and produced over 5 bulls for us. Her dark cherry red dam is being sold as Lot 119.



93 SRA ET MERLIN 1613K ET

REG: 4614957 DOB: 01/11/22 TAT: 1613K BREED: 100% AR

LJC MERLIN T179
WFL MERLIN 018A
 WFL COMMITMENT 042Y

3SCC ZEPPLIN X96
YCRA GOLDBAR A53
 YCRA GOLDBAR K28

LJC MISSION STATEMENT P27
 BUF CRK REDPRIDE N179
 BROWN COMMITMENT S7206
 WFL JEWELMAKER 9024
 3SCC ZEPPLIN S99
 3SCC DINA S53
 OLC DONNA CHATO S183
 PSR GOLDBAR 819

ProS	HB	GM	CED	BW	WW	YW	ADG	MILK	ME	HPG	CEM	STAY	MARB	YG	CW	REA	FAT
92	45	48	15	-3.6	63	102	.25	27	2	8	9	14	.46	-.05	20	.31	.00
50%	70%	30%	20%	19%	41%	39%	37%	36%	43%	94%	14%	71%	39%	7%	64%	17%	16%

A Merlin daughter from our Embryo Transfer program. Her full brother was the highest-selling bull on our 2021 Sale. She will transfer with half a profile due to her granddam not having DNA when we flushed this cow.

94 SRA ROLLING DEEP 7156K

REG: 4615089 DOB: 03/07/22 TAT: 7156K BREED: 100% AR

BIEBER ROLLIN DEEP Y118
SRN ALISTAR 1635
 MESSMER LINDA T112

ANDRAS NEW DIRECTION R240
AJS JAG ND 7156
 JAG RUBY 106Y

BIEBER ROOSEVELT W384
 BIEBER TILLY 399W
 BECKTON LANCER F442 T
 MESSMER LINDA 2322
 ANDRAS IN FOCUS B152
 ANDRAS KURUBA B111
 BROWN COMMITMENT S7206
 JAG RED ROSE 614S

ProS	HB	GM	CED	BW	WW	YW	ADG	MILK	ME	HPG	CEM	STAY	MARB	YG	CW	REA	FAT
95	55	40	12	-0.6	68	108	.25	28	4	10	7	16	.45	.05	27	.22	.02
46%	49%	45%	55%	74%	24%	26%	31%	25%	53%	70%	55%	47%	41%	40%	35%	30%	46%

Here is the best natural sired heifer on the sale out of our Rolling Deep son herd bull. Her dam is a New Direction and maybe one of the best cows in our herd that we are selling as Lot 117. Lots of opportunities with this open heifer.

Lots 95-106 are the top end of our natural service heifers. All these heifers have great pedigrees and will make good future cows. All of our Herd bulls used for natural service have a significant investment in them, which allows us to sell the high end replacement heifers you are seeing today.

95 SRA LIBERTY 816K

REG: 4615087 DOB: 03/04/22 TAT: 816K BREED: 100% AR

FEDDES LIBERTY D210
ANDRAS LIBERTY F176
 ANDRAS CHEY BRILLIANCE D117

WFL MERLIN 018A
SRA MERLIN 816H
 CB-BD MS REDEMPTION 1816

5L INDEPENDENCE 560-298Y
 FEDDES SLEEK 806
 ANDRAS BRILLIANCE B002
 ANDRAS CHEYENNE 1139
 LJC MERLIN T179
 WFL COMMITMENT 042Y
 BROWN JY REDEMPTION Y1334
 CB RACHEL'S FOCUS 1301A

ProS	HB	GM	CED	BW	WW	YW	ADG	MILK	ME	HPG	CEM	STAY	MARB	YG	CW	REA	FAT
91	48	43	12	-2.0	62	102	.25	27	0	11	5	15	.62	.07	10	-.07	.02
52%	64%	38%	57%	47%	43%	39%	35%	34%	34%	56%	86%	57%	14%	54%	91%	89%	47%

96 SRA REFORM 9309

REG: 4615079 DOB: 02/22/22 TAT: 9309K BREED: 100% AR

WEBER REFORM 618
WEBER REFORM 844
 WEBER CORNERSTONE 520

BROWN COMPLETE B238
SRA COMPLETE LADY 9309
 KAW M26P BECTORIA 963

BIEBER ROLLIN DEEP Y118
 BIF LANA'S EQUAL 8021U
 WEBR DOC HOLIDAY 2N
 PFRR MS NYACK 237
 LSF TAKEOVER 9943W
 BROWN MS P707 X7580
 RED FINE LINE MULBERRY 26P
 JAG LANA 516R

ProS	HB	GM	CED	BW	WW	YW	ADG	MILK	ME	HPG	CEM	STAY	MARB	YG	CW	REA	FAT
85	55	30	11	0.6	60	97	.23	27	5	11	8	15	.39	.11	21	.06	.03
63%	50%	67%	68%	89%	54%	51%	47%	38%	59%	48%	35%	54%	55%	76%	61%	66%	81%



97 SRA REFORM 810K

REG: 4615105 DOB: 02/27/22 TAT: 810K BREED: 100% AR

WEBER REFORM 618
WEBER REFORM 844
 WEBER CORNERSTONE 520

BROWN JY REDEMPTION Y1334
SRA REDEMPTION 8101
 SCHWEITZER 1602

BIEBER ROLLIN DEEP Y118
 BIF LANA'S EQUAL 8021U
 WEBR DOC HOLIDAY 2N
 PFRR MS NYACK 237
 BECKTON NEBULA P P707
 JYJ MS JOLENE W16
 ANDRAS NEW DIRECTION R240
 JAG LANA 815U

ProS	HB	GM	CED	BW	WW	YW	ADG	MILK	ME	HPG	CEM	STAY	MARB	YG	CW	REA	FAT
103	63	40	13	-1.8	57	97	.25	25	4	11	7	17	.38	.13	30	.05	.02
33%	33%	46%	43%	50%	65%	52%	35%	53%	57%	50%	50%	25%	58%	84%	25%	68%	64%

98 SRA REFORM 1407K

REG: 4615107 DOB: 03/13/22 TAT: 1407K BREED: 100% AR

WEBER REFORM 618
WEBER REFORM 844
 WEBER CORNERSTONE 520

FEDDES OSCAR 1119
RBH VERDALE 1407
 RBH VERDI 808

BIEBER ROLLIN DEEP Y118
 BIF LANA'S EQUAL 8021U
 WEBR DOC HOLIDAY 2N
 PFRR MS NYACK 237
 RED CROWFOOT OLE'S OSCAR
 RBH LAKINA 601S
 FEDDES VERMILLION R13
 CTDB VERDI 236

ProS	HB	GM	CED	BW	WW	YW	ADG	MILK	ME	HPG	CEM	STAY	MARB	YG	CW	REA	FAT
89	66	23	13	-1.2	56	93	.23	30	6	9	8	18	.30	.12	22	.00	.03
56%	29%	79%	51%	63%	67%	59%	48%	16%	67%	92%	31%	13%	79%	80%	55%	78%	71%

99 SRA REFORM 6139K

REG: 4649303 DOB: 02/15/22 TAT: 6139K BREED: 100% AR

BIEBER ROLLIN DEEP Y118
SRN ALISTAR 1635
 MESSMER LINDA T112

RRA ROLL TIDE 135 355
RRA LASSIE 51X 6139
 BADLANDS LASSIE 51X

BIEBER ROOSEVELT W384
 BIEBER TILLY 399W
 BECKTON LANCER F442 T
 MESSMER LINDA 2322
 RRA CRIMSON TIDE 135
 MLK CRK LAKOTA 095
 RD TER-RON FULLY LOADED 540R
 SIX MILE LASSIE 377P

ProS	HB	GM	CED	BW	WW	YW	ADG	MILK	ME	HPG	CEM	STAY	MARB	YG	CW	REA	FAT
88	57	31	11	0.3	63	106	.27	23	7	11	8	16	.25	-.07	25	.36	-.01
58%	45%	65%	73%	86%	39%	31%	23%	75%	71%	49%	39%	43%	88%	5%	41%	12%	5%

100 SRA RAGNAR 6116K

REG: 4615109 DOB: 03/13/22 TAT: 6116K BREED: 100% AR

PIE CODE RED 9058
KAW RAGNAR 527
 KAW M26P BECTORIA 963

BECKTON EPIC R397 K
TBS EPIC DAY 6116
 TBS DOOR IS DAY 015

VGW GAME PLAN 508
 PIE STORMY 541
 RED FINE LINE MULBERRY 26P
 JAG LANA 516R

BECKTON EPIC K F075
 BECKTON KIT F468 JL
 TBS SENSATION 8055
 TBS DOOR IS DAY 777

ProS	HB	GM	CED	BW	VW	YW	ADG	MILK	ME	HPG	CEM	STAY	MARB	YG	CW	REA	FAT
102	72	30	10	0.1	59	93	.22	18	3	14	6	18	.32	.05	18	.05	.01
34%	19%	66%	88%	84%	57%	59%	60%	97%	51%	16%	64%	20%	73%	41%	72%	68%	37%



101 SRA RAGNAR 351K

REG: 4615099 DOB: 03/12/22 TAT: 351K BREED: 100% AR

ANDRAS IN FOCUS B175
ANDRAS FUSION R236
 ANDRAS BELLE B167

RED SIX MILE TIMBERLINE 880W
AJS 351
 YCRA GOLDBAR A38

MYTTY IN FOCUS
 DI ESTONIA 316
 ANDRAS THUNDER B105
 ANDRAS BELLE 416

SIX MILE TIMBERLAKE 180T
 RED SIX MILE FLOWER 713S
 OLC YOD CHATO S230
 YCRA GOLDBAR G8

ProS	HB	GM	CED	BW	VW	YW	ADG	MILK	ME	HPG	CEM	STAY	MARB	YG	CW	REA	FAT
91	48	43	15	-3.1	51	86	.22	25	-1	8	10	13	.46	.07	18	-.05	.00
53%	64%	38%	21%	26%	82%	74%	59%	57%	28%	94%	6%	73%	39%	51%	72%	86%	24%



102 SRA RAGNAR 2111

REG: 4615115 DOB: 03/20/22 TAT: 2111K BREED: 100% AR

BIEBER ROLLIN DEEP Y118
SRN ALISTAR 1635
 MESSMER LINDA T112

MESSMER PACKER S008
HLH MS PACKER 4207 2111
 HLH ABBIE 724 4207

BIEBER ROOSEVELT W384
 BIEBER TILLY 399W
 BECKTON LANCER F442 T
 MESSMER LINDA 2322

MESSMER JOSHUA 019P
 MESSMER MILLIE 124P
 LCC ABOVE & BEYOND 1300J
 HLH LIGHTN LASS 312 724

ProS	HB	GM	CED	BW	VW	YW	ADG	MILK	ME	HPG	CEM	STAY	MARB	YG	CW	REA	FAT
109	75	34	15	-2.8	67	108	.25	28	6	11	11	17	.29	-.01	27	.45	.02
24%	14%	58%	25%	32%	25%	27%	33%	31%	66%	57%	3%	26%	80%	16%	36%	5%	64%



103 SRA RAGNAR 518K

REG: 4609373 DOB: 04/13/22 TAT: 518K BREED: 100% AR

PIE CODE RED 9058
KAW RAGNAR 527
 KAW M26P BECTORIA 963

LSF HERDBUILDER 1058Y
ALRA BEYOND HERD 518C
 AMBERLIGHT A AND B 208

VGW GAME PLAN 508
 PIE STORMY 541
 RED FINE LINE MULBERRY 26P
 JAG LANA 516R

BECKTON EPIC R397 K
 LSF COVER GIRL S6076 W9037
 LCC ABOVE & BEYOND 1300J
 AMBERLIGHT 040

ProS	HB	GM	CED	BW	VW	YW	ADG	MILK	ME	HPG	CEM	STAY	MARB	YG	CW	REA	FAT
99	69	30	10	-0.3	63	100	.23	28	6	14	7	17	.37	.03	16	.08	.01
39%	24%	66%	82%	79%	39%	44%	50%	29%	70%	14%	46%	30%	61%	30%	77%	61%	33%





104 SRA RAGNAR 8519K

REG: 4615103 DOB: 03/13/22 TAT: 8519K BREED: 100% AR

PIE CODE RED 9058
KAW RAGNAR 527
 KAW M26P BECTORIA 963

BROWN COMPLETE B238
SRA BC 8519
 LMG MISS TINA 55199

VGW GAME PLAN 508
 PIE STORMY 541
 RED FINE LINE MULBERRY 26P
 JAG LANA 516R
 LSF TAKEOVER 9943W
 BROWN MS P707 X7580
 LMG GILLS INDEED 1603
 LUCHT TINA 996

ProS	HB	GM	CED	BW	WW	YW	ADG	MILK	ME	HPG	CEM	STAY	MARB	YG	CW	REA	FAT
78	52	26	15	-4.4	51	79	.17	27	5	13	9	14	.45	.04	12	.00	.01
74%	55%	75%	20%	11%	81%	84%	84%	34%	58%	25%	19%	63%	41%	38%	88%	78%	38%

LOT 104



105 SRA RAGNAR 579K

REG: 4615065 DOB: 02/13/22 TAT: 579K BREED: 100% AR

PIE CODE RED 9058
KAW RAGNAR 527
 KAW M26P BECTORIA 963

26P RED FINE WINE
KAW MS MULBERRY 2X 579
 KAW M26P BECTORIA 963

VGW GAME PLAN 508
 PIE STORMY 541
 RED FINE LINE MULBERRY 26P
 JAG LANA 516R
 RED FINE LINE MULBERRY 26P
 SOR MINERVO ENT 0029K
 RED FINE LINE MULBERRY 26P
 JAG LANA 516R

ProS	HB	GM	CED	BW	WW	YW	ADG	MILK	ME	HPG	CEM	STAY	MARB	YG	CW	REA	FAT
86	71	16	11	-0.5	56	88	.20	25	4	15	8	16	.25	.03	13	-.01	.00
60%	21%	89%	71%	75%	67%	70%	70%	54%	56%	5%	35%	36%	88%	29%	85%	81%	19%



106 SRA RAGNAR 615K

REG: 4609393 DOB: 04/19/22 TAT: 615K BREED: 100% AR

PIE CODE RED 9058
KAW RAGNAR 527
 KAW M26P BECTORIA 963

LSF HERDBUILDER 1058Y
AMBER LIGHT HERDBUILDER 615
 AMBERLIGHT RED SEQUAL 573

VGW GAME PLAN 508
 PIE STORMY 541
 RED FINE LINE MULBERRY 26P
 JAG LANA 516R
 BECKTON EPIC R397 K
 LSF COVER GIRL S6076 W9037
 LCC VAQUERO 1412J
 AMBRLGHT RED SEQUAL 867

ProS	HB	GM	CED	BW	WW	YW	ADG	MILK	ME	HPG	CEM	STAY	MARB	YG	CW	REA	FAT
97	66	31	9	1.3	62	100	.24	25	6	13	6	17	.36	.04	17	-.01	.00
44%	30%	64%	91%	94%	43%	43%	44%	58%	69%	19%	74%	24%	64%	38%	76%	81%	20%

LOT 106





This is our younger wave of natural service heifers we are offering. They are all out of our productive herd sires. You can buy one or take the whole group. Lot 112 will transfer half pedigree or as 1B. Another great set of heifers that will be eye-catchers for years on green grass.

107 SRA RAGNAR 928K

REG: 4609475 DOB: 04/18/22 TAT: 928K BREED: 100% AR

PIE CODE RED 9058
KAW RAGNAR 527
 KAW M26P BECTORIA 963

WFL MERLIN 018A
ECCO 928G
 AMBER LIGHT CONQUEROR 612

VGW GAME PLAN 508
 PIE STORMY 541
 RED FINE LINE MULBERRY 26P
 JAG LANA 516R
 LJC MERLIN T179
 WFL COMMITMENT 042Y
 LSF CONQUEROR 0026X
 ALRA NIGHT CALVER 407

ProS	HB	GM	CED	BW	WW	YW	ADG	MILK	ME	HPG	CEM	STAY	MARB	YG	CW	REA	FAT
80	51	29	10	0.3	64	103	.25	25	6	14	5	15	.35	.10	24	.02	.02
71%	59%	68%	86%	86%	37%	36%	36%	57%	67%	15%	82%	57%	65%	68%	48%	74%	47%

108 SRA RAGNAR 606K

REG: 4615075 DOB: 02/19/22 TAT: 606K BREED: 100% AR

PIE CODE RED 9058
KAW RAGNAR 527
 KAW M26P BECTORIA 963

JAG DESIGN 331A
GWR LANA 606
 JAG RUBY 110Y

VGW GAME PLAN 508
 PIE STORMY 541
 RED FINE LINE MULBERRY 26P
 JAG LANA 516R
 JAG DESIGN 108Y
 JAG LANA 815U
 5L DOUBLE DESIGN 1177-227W
 JAG LANA 521R

ProS	HB	GM	CED	BW	WW	YW	ADG	MILK	ME	HPG	CEM	STAY	MARB	YG	CW	REA	FAT
88	80	7	11	-0.4	62	93	.20	25	3	13	6	19	.15	-.01	15	.09	.00
59%	92%	96%	76%	77%	46%	59%	71%	50%	48%	24%	74%	7%	97%	15%	79%	60%	9%

109 SRA RAGNAR 815K

REG: 4609459 DOB: 04/12/22 TAT: 815K BREED: 100% AR

PIE CODE RED 9058
KAW RAGNAR 527
 KAW M26P BECTORIA 963

ANDRAS NEW DIRECTION R240
ECCO 815F
 AMBERLIGHT SACETTE 310

VGW GAME PLAN 508
 PIE STORMY 541
 RED FINE LINE MULBERRY 26P
 JAG LANA 516R
 ANDRAS IN FOCUS B152
 ANDRAS KURUBA B111
 LSF CYCLONE 9934W
 AMBERLIGHT SACETTE 158

ProS	HB	GM	CED	BW	WW	YW	ADG	MILK	ME	HPG	CEM	STAY	MARB	YG	CW	REA	FAT
91	58	33	11	-1.4	61	97	.22	26	5	15	6	15	.37	.08	24	.02	.01
54%	45%	60%	69%	59%	48%	50%	52%	44%	64%	5%	64%	56%	61%	60%	46%	74%	31%

110 SRA RAGNAR 932K

REG: 4609477 DOB: 04/10/22 TAT: 932K BREED: 100% AR

PIE CODE RED 9058
KAW RAGNAR 527
 KAW M26P BECTORIA 963

WFL MERLIN 018A
ECCO 928G
 AMBER LIGHT CONQUEROR 612

VGW GAME PLAN 508
 PIE STORMY 541
 RED FINE LINE MULBERRY 26P
 JAG LANA 516R
 LJC MERLIN T179
 WFL COMMITMENT 042Y
 LSF CONQUEROR 0026X
 ALRA NIGHT CALVER 407

ProS	HB	GM	CED	BW	WW	YW	ADG	MILK	ME	HPG	CEM	STAY	MARB	YG	CW	REA	FAT
72	31	41	12	-1	78	130	.32	25	13	12	8	12	.40	.22	32	.11	.06
75%	89%	29%	48%	61%	3%	2%	2%	57%	94%	39%	33%	90%	44%	98%	14%	41%	99%

111 WKK SRA ROLLING DEEP 343K

REG: 4615135 DOB: 03/25/22 TAT: 343K BREED: 100% AR

BIEBER ROLLIN DEEP Y118
SRN ALISTAR 1635
 MESSMER LINDA T112

MLK CRK UNIFIED 4207
BIEBER GALLEE 343G
 BIEBER GALLEE 558D

BIEBER ROOSEVELT W384
 BIEBER TILLY 399W
 BECKTON LANCER F442 T
 MESSMER LINDA 2322
 ANDRAS FUSION R236
 MLK CRK LAKOTA 953
 BIEBER H HUGHES W109
 BIEBER GALLEE 291X

ProS	HB	GM	CED	BW	WW	YW	ADG	MILK	ME	HPG	CEM	STAY	MARB	YG	CW	REA	FAT
78	46	33	11	-0.7	64	101	.23	28	8	11	9	14	.38	-.05	22	.41	.01
74%	69%	61%	68%	72%	37%	40%	45%	28%	78%	65%	19%	70%	57%	8%	55%	7%	39%

112 SRA FUSION 4K ET

REG: 4614949 DOB: 02/20/22 TAT: 4K BREED: 100% AR

ANDRAS IN FOCUS B175
ANDRAS FUSION R236
 ANDRAS BELLE B167

BROWN JYJ REDEMPTION Y1334
SRA 3510
 YCRA GOLDBAR A38

MYTTY IN FOCUS
 DI ESTONIA 316
 ANDRAS THUNDER B105
 ANDRAS BELLE 416
 BECKTON NEBULA P P707
 JYJ MS JOLENE W16
 OLC YOD CHATO S230
 YCRA GOLDBAR G8

ProS	HB	GM	CED	BW	WW	YW	ADG	MILK	ME	HPG	CEM	STAY	MARB	YG	CW	REA	FAT
118	62	56	14	-3.3	52	90	.24	24	1	8	9	17	.62	.11	21	-.12	.01
15%	35%	17%	34%	23%	79%	64%	40%	62%	37%	94%	21%	28%	13%	76%	58%	94%	29%

113 SRA BLK X PORTER 011K

REG: 4615051 DOB: 02/02/22 TAT: 011K BREED: 100% AR

5L ADVANTAGE 3267-221Y
SRA 5L ADVANTAGE 622H
 TLA MISS BELLA PREMIER 622D

ANDRAS FUSION R236
KAW DARK FUSION 011
 KAW SALLY 842

BUF CRK THE RIGHT KIND U199
 5L ADINA 195-3267
 BROWN PREMIER X7876
 TLA BELLA 103
 ANDRAS IN FOCUS B175
 ANDRAS BELLE B167
 KAW RAGNAR 527
 CARAS RACHEL 583

ProS	HB	GM	CED	BW	WW	YW	ADG	MILK	ME	HPG	CEM	STAY	MARB	YG	CW	REA	FAT
115	64	52	12	0.1	59	99	0.25	22	-2	13	8	15	0.43	0.05	27	0.13	0.01
15%	39%	14%	57%	80%	48%	38%	28%	75%	22%	33%	25%	68%	38%	44%	26%	37%	32%

114 WKK SRA REFORM 252K

REG: 4615129 DOB: 02/14/22 TAT: 252K BREED: 100% AR

WEBER REFORM 618
WEBER REFORM 844
 WEBER CORNERSTONE 520

PIE STOCKMAN 4051
BIEBER TORYANNA 252G
 BIEBER TORYANNA 548D

BIEBER ROLLIN DEEP Y118
 BJF LANA'S EQUAL 8021U
 WEBER DOC HOLLIDAY 2N
 PFFR MS NYACK 237
 LSF SAGA 1040Y
 PIE LAKOTA 046
 BIEBER ROLLIN DEEP Y118
 BIEBER TORYANNA 211Y

ProS	HB	GM	CED	BW	WW	YW	ADG	MILK	ME	HPG	CEM	STAY	MARB	YG	CW	REA	FAT
96	63	33	10	0.6	70	116	.29	30	6	6	7	18	.34	.10	30	.22	.03
45%	35%	60%	85%	89%	17%	13%	11%	13%	70%	98%	46%	13%	67%	68%	26%	30%	80%

Bred Cows

As we prepare the catalog, we have a minimum of 13 bred cows we are offering, due to falling out of our calving window. We may have more by sale time. I just want to highlight these are not our cull cows, these are great cows.

Every one of the cows we are offering was mated by Artificial Insemination. There is not one natural cow on this lineup. We will preg check them all before sale time and give you the best calving window we can. April and May will be the main calving period. All the cows are bred to our herd sires and we will list the mating out. We would be interested in buying these calves back if the new owner is willing.

116 SRA REDEMPTION 8101

REG: 3897797 DOB: 01/24/18 TAT: 810 BREED: 100% AR

BECKTON NEBULA P P707
BROWN JYI REDEMPTION Y1334
JYI MS JOLENE W16

BECKTON NEBULA M045
BECKTON LANA M809 EP
LJC MISSION STATEMENT P27
HXC JOLENE R548

ANDRAS NEW DIRECTION R240
SCHWEITZER 1602
JAG LANA 815U

ANDRAS IN FOCUS B152
ANDRAS KURUBA B111
BASIN CHEROKEE 2926
JAG LANA 613S

ProS	HB	GM	CED	BW	VW	YW	ADG	MILK	ME	HPG	CEM	STAY	MARB	YG	CW	REA	FAT
100	52	48	14	-3.7	59	100	.25	21	4	13	6	16	.48	.11	30	.06	.01
35%	63%	19%	27%	16%	47%	35%	24%	82%	59%	22%	76%	58%	28%	71%	17%	52%	44%

Here is a dark cherry red Redemption daughter. She is beautiful! Her mother is out of Andras New Direction. She checks all the boxes for outstanding EPDs and pedigree. She is a 2018 model bred to Rolling Deep Allistar bull Reg # 3547948

118 SRA BIEBER DRIVEN 1140

REG: 4457339 DOB: 01/31/21 TAT: 1140 BREED: 99.9% AR 0.1% XX

BIEBER HARD DRIVE Y120
BIEBER DRIVEN C540
BIEBER JOAN 309Y

LACY GOLD BAR 8123
BIEBER LAURA 158W
LCOC HIGH NOON A093R
BIEBER JOAN 7502

SCHULER REBEL 0029X
SCHWEITZER 1601
RBH VERDALE 1407

BECKTON NEBULA P P707
SOR RUTH RMR 5055R
FEDDES OSCAR 1119
RBH VERDI 808

ProS	HB	GM	CED	BW	VW	YW	ADG	MILK	ME	HPG	CEM	STAY	MARB	YG	CW	REA	FAT
123	78	45	11	-1.0	73	114	.26	30	8	14	7	18	.58	.10	32	.19	.03
10%	11%	35%	70%	67%	10%	16%	30%	14%	80%	11%	41%	16%	18%	70%	19%	37%	69%

This is a heifer that slipped her AI calf and we bred her back to our Relentless herd bull from Twedt Red Angus reg # 4331113. He is a -7.5 BW so the calf should drop out just fine. She is sired by Bieber Driven and her mother is out of Schuler Rebel. Another great pedigree that you can now own.

120 TBS NEW CRYSTAL 6124

REG: 3568856 DOB: 04/06/16 TAT: 6124 BREED: 100% AR

ANDRAS IN FOCUS B152
ANDRAS NEW DIRECTION R240
ANDRAS KURUBA B111

MYTTY IN FOCUS
ANDRAS PINETA B91
MORGANS DIRECTION 111 9901
ANDRAS KURUBA B71

LARSON SUN KING 016
TBS CRYSTAL SUNKING 447
TBS CRYSTAL CANYON 738

BECKTON NEBULA P P707
LARSON TAMARA 545-556
BHR GRAND CANYON 440B
SHHM ICE CRYSTAL 15H

ProS	HB	GM	CED	BW	VW	YW	ADG	MILK	ME	HPG	CEM	STAY	MARB	YG	CW	REA	FAT
119	59	60	13	-2.1	59	102	.27	19	5	15	7	15	.54	.18	38	.05	.03
13%	50%	7%	37%	41%	51%	30%	14%	88%	60%	9%	58%	61%	19%	94%	5%	54%	75%

Another New Direction sired cow that is hard to get rid of. Deep-bodied cherry red cow that has always thrown excellent progeny. She is a 2016 model bred to Rolling Deep Allistar bull Reg # 3547948. If you want to see what kind of bulls, she produces look at lot the Lot 55 bull. This is her calf, and she is bred back the same way.

115 AJS BROWN COMP. 7318

REG: 3753137 DOB: 01/05/17 TAT: 7318 BREED: 100% AR

LSF TAKEOVER 9943W
BROWN COMPLETE B238
BROWN MS P707 X7580

HXC CONQUEST 4405P
LSF WIDELOAD R5014 U8061
BECKTON NEBULA P P707
C-BAR & BROWN ABIGRACE T714
SCHULER BASIN CHEROKEE 7318T
JAG RUBY 717T
BASIN CHEROKEE 2926
JAG JULIET 417P

JAG BASELINE 018X
JAG RUBY 318A
JAG JULIE 820U

ProS	HB	GM	CED	BW	VW	YW	ADG	MILK	ME	HPG	CEM	STAY	MARB	YG	CW	REA	FAT
75	48	27	16	-4.5	58	89	.19	33	3	11	8	14	.50	.01	10	.17	.03
71%	67%	57%	11%	9%	54%	61%	67%	8%	47%	53%	33%	71%	25%	23%	82%	29%	69%

Take a look at this girl in the photo on page 39. It may be one of the best cows we have raised. A Brown Complete daughter that shows what we want the cows to look like in our program. She is a 2017 model. She has a great udder, and we have two of her daughters in our program. She will build any program and is sired to our Rolling Deep Allistar bull Reg #3547948.

117 AJS JAG ND 7156

REG: 3753177 DOB: 03/05/17 TAT: 7156 BREED: 100% AR

ANDRAS IN FOCUS B152
ANDRAS NEW DIRECTION R240
ANDRAS KURUBA B111

MYTTY IN FOCUS
ANDRAS PINETA B91
MORGANS DIRECTION 111 9901
ANDRAS KURUBA B71

BROWN COMMITMENT S7206
JAG RUBY 106Y
JAG RED ROSE 614S

LJC LANCER 806
BROWN MS SHAZZAM P7940
SCHULER NONE WIDER 1354L
LONE ROCK ROSE HVN 9762

ProS	HB	GM	CED	BW	VW	YW	ADG	MILK	ME	HPG	CEM	STAY	MARB	YG	CW	REA	FAT
117	66	52	12	-2.0	60	95	.22	29	0	12	5	17	.68	.23	30	-.17	.04
15%	38%	15%	54%	42%	45%	47%	49%	25%	35%	35%	82%	37%	6%	98%	19%	92%	85%

The three lead cows on this offering are all outstanding, but this 2017 New Direction daughter may get the trophy. She was an ET calf out of \$8,500 JAG RUBY COW sold on the Jim Goseys Dispersal. Another pedigree and EPD profile that we all reach for. She is bred to Rolling Deep Allistar bull Reg #3547948.

119 PIE RUBY 5174

REG: 3503411 DOB: 03/03/15 TAT: 5174 BREED: 100% AR

LSF SAGA 1040Y
PIE ENHANCER 337
PIE POLLY 124

BECKTON EPIC R397 K
LSF MINOLA T7172 W9041
PIE CODE RED 9058
PIE POLLY 922

LCB HOSS A444N
PIE RUBY 9106
PIE M.S. CADSAM 8192

BLUE RIDGE PONDEROSA
RSLND REBELLA 120-502
SAMS PROSPECTOR 133Z
PIE MS CADILLAC

ProS	HB	GM	CED	BW	VW	YW	ADG	MILK	ME	HPG	CEM	STAY	MARB	YG	CW	REA	FAT
113	74	39	11	-2.5	52	84	.20	26	1	9	3	22	.41	.16	22	-.10	.03
19%	25%	32%	69%	34%	75%	70%	61%	48%	38%	80%	97%	3%	42%	91%	43%	84%	77%

A 2015 model cow out of Pieper Enhancer has been an outstanding cow for us. We have sold over \$17,000 out of her since she came into our program. She is bred to Rolling Deep Allistar bull Reg # 3547948. Deep cherry red cow with a dark face.

121 SRA MISS BIG SKY 9574

REG: 4094360 DOB: 01/22/19 TAT: 9574 BREED: 100% AR

BIEBER MAKE MIMI 7249
FEDDES BIG SKY R9
FEDDES LAKINA 310

BJR MAKE MY DAY 981
BIEBER SIRENA 6708
LCHMN GRANDCANYON 1244G
FEDDES LAKINA 954

LMG GILLS INDEED 1603
LMG MISS MTX 5574
LMG MISS MTX 1364

RED TOWAW INDEED 104H
LMG D'NETTE 3041
LMG GILLS BULL DAWG 8507-743
LMG MTX 062

ProS	HB	GM	CED	BW	VW	YW	ADG	MILK	ME	HPG	CEM	STAY	MARB	YG	CW	REA	FAT
119	79	40	12	-2.6	63	91	.17	34	5	13	8	18	.54	.06	31	.11	.00
13%	18%	32%	52%	31%	33%	56%	79%	5%	61%	24%	37%	25%	19%	46%	15%	41%	17%

A 2019 cow with Feddes Big Sky as her sire. She had an excellent bull in our 2022 sale. She is bred to Rolling Deep Allistar bull Reg # 3547948

122 LSF SRR JAMES D6127 F8010

REG: 3925487 DOB: 12/29/17 TAT: F8010 BREED: 100% AR

5L ADVOCATE 817-14W
5L DEFENDER 560-30Z
 5L BLACK ADINA 525-560

5L INDEPENDENCE 560-298Y
LSF SRR JAMES B4077 D6127
 LSF JAMES Z2358 B4077

5L SIGNATURE 5615
 5L MARTA 345-817
 TC STOCKMAN 365
 5L ADINA 293-525
 BUF CRK THE RIGHT KIND U199
 5L BLACK ADINA 525-560
 BROWN JY REDEMPTION Y1334
 LSF RR JAMES U8284 Z2358

ProS	HB	GM	CED	BW	WW	YW	ADG	MILK	ME	HPG	CEM	STAY	MARB	YG	CW	REA	FAT
59	-7	66	12	-3.1	65	112	.29	23	5	12	3	8	.81	-.04	21	.12	-.02
89%	99%	4%	54%	24%	26%	14%	7%	68%	62%	46%	96%	99%	2%	8%	46%	38%	2%

A 2017 5L Defender Daughter bred to a Seneca Son Reg # 4379383. This herd bull has all the gaining EPDs in the top 5% of the breed.

124 LSF SRR DORYJIBA B4353 F8073

REG: 3925611 DOB: 01/22/18 TAT: F8073 BREED: 100% AR

5L ADVOCATE 817-14W
5L DEFENDER 560-30Z
 5L BLACK ADINA 525-560

RED LAZY MC SERGEANT 97Z
LSF SRR DORY JIBA B4353
 SRR DORY-JIBA 252-9117

5L SIGNATURE 5615
 5L MARTA 345-817
 TC STOCKMAN 365
 5L ADINA 293-525
 RED SSS SOLDIER 365W
 RED LAZY MC GOLD DESIGN 68U
 BASIN EXT 7455
 SRR DORY JIBA 9117-5036

ProS	HB	GM	CED	BW	WW	YW	ADG	MILK	ME	HPG	CEM	STAY	MARB	YG	CW	REA	FAT
91	52	38	19	-4.4	75	125	.31	26	8	15	8	14	.44	-.14	24	.46	-.02
50%	62%	34%	1%	10%	5%	3%	3%	49%	81%	12%	22%	74%	36%	1%	36%	4%	2%

A 2018 5L Defender daughter with eight of her EPD ranking being in the top 10% of the breed. This cow has flush potential. She is bred to a Seneca son Reg # 4379383. The planned mating on this calf has 11 of his EPD traits in the top 10% of the breed.

126 BIEBER CL DATELINE 578G

REG: 4153788 DOB: 03/15/19 TAT: 578G BREED: 100% AR

BIEBER ROUSE SAMURAI X2Z
BIEBER SPARTACUS A193
 BIEBER TILLY 233U

HUST CHIEF SEQUOYA R336
BIEBER DATELINE 308Y
 BASIN ROSE 7127

LCC CHEYENNE B221L
 GHR MARITA R31
 LCOC HIGH NOON A093R
 BIEBER TILLY 7334
 CCF SEQUOYA 0361
 LCC REBELLA NA123
 BASIN CHEROKEE 4246
 BASIN ROSE 1938

ProS	HB	GM	CED	BW	WW	YW	ADG	MILK	ME	HPG	CEM	STAY	MARB	YG	CW	REA	FAT
43	10	33	15	-4.0	73	114	.26	28	7	6	6	11	.48	.11	25	.10	.03
97%	98%	45%	13%	13%	8%	12%	22%	28%	76%	98%	62%	93%	28%	73%	31%	43%	77%

A 2018 Bieber Spartacus daughter. She had the best bull in our 2021 lineup that we somehow lost in a pond. She has an outstanding pedigree followed up by a great EPD profile. She is bred back to Bieber Rolling Deep Allistar #3547948

123 ECCO 912G

REG: 4188198 DOB: 03/30/19 TAT: 912G BREED: 99.8% AR 0.2% XX

ANDRAS IN FOCUS B15Z
ANDRAS NEW DIRECTION R240
 ANDRAS KURUBA B111

MUSHRUSH IMPRESSIVE CA U236
LELAND PRESSIVE 236-5429
 LELAND FIRE Y134

MYTTY IN FOCUS
 ANDRAS PINETA B91
 MORGANS DIRECTION 111 9901
 ANDRAS KURUBA B71
 BUF CRK LANCER R017
 MUSHRUSH MADAM LT R265
 5L FIREBRAND P19-T22
 LELAND LANA 442-4078

ProS	HB	GM	CED	BW	WW	YW	ADG	MILK	ME	HPG	CEM	STAY	MARB	YG	CW	REA	FAT
89	47	42	14	-3.0	57	93	.22	21	-1	13	5	15	.44	.10	28	.16	.03
52%	71%	28%	25%	26%	55%	50%	43%	79%	31%	27%	83%	70%	36%	68%	23%	31%	75%

Yet again another great Andras New Direction 2019 model cow. She has a great pedigree and EPD profile. Bred to a Seneca Son Reg # 4379383, her calf will have an outstanding pedigree and EPD profile.

125 ECCO 830F

REG: 4034198 DOB: 04/04/18 TAT: 830F BREED: 99.9% AR 0.1% XX

ANDRAS IN FOCUS B15Z
ANDRAS NEW DIRECTION R240
 ANDRAS KURUBA B111

AMBERLIGHT GRAND VAQUERO 559
AMBERLIGHT GRAND VAQ 816
 AMBERLIGHT CANYONETTE 578

MYTTY IN FOCUS
 ANDRAS PINETA B91
 MORGANS DIRECTION 111 9901
 ANDRAS KURUBA B71
 LCC VAQUERO 1412J
 AMBRLIGHT GALATAEYA 16Z
 BFCK CHEROKEE CNYN 4912
 AMBERLIGHT NO EQUAL 338

ProS	HB	GM	CED	BW	WW	YW	ADG	MILK	ME	HPG	CEM	STAY	MARB	YG	CW	REA	FAT
88	38	50	13	-2.2	62	105	.27	23	6	12	5	14	.43	.15	35	.06	.03
54%	83%	16%	45%	39%	38%	24%	15%	70%	70%	48%	82%	72%	38%	89%	8%	52%	69%

The final 2018 New Direction daughter with an outstanding pedigree and EPD profile. She is bred to a Seneca son Reg # 4379383. This Calf will be elite in its pedigree and EPD profile. Don't sleep on this offering.

127 AMBERLIGHT BOUTIQUE 541

REG: 3493330 DOB: 04/13/15 TAT: 541 BREED: 100% AR

RED CROWFOOT OLE'S OSCAR
C-BAR ANTICIPATION 101W
 BROWN MS ABIGRACE L7730

AMBERLIGHT GRAND VAQUERO 559
AMBERLIGHT AVANA 916
 AMBERLIGHT BOUTIQUE 061

MLK CRK CUB 722
 RED CROWFOOT OMEGA 9179J
 GLACIER LOGAN 210
 LCHMN ABIGAIL E1013
 LCC VAQUERO 1412J
 AMBRLIGHT GALATAEYA 16Z
 LCHMN HEVN'S SAKE 1002F
 AMBERLIGHT AMORET A861

ProS	HB	GM	CED	BW	WW	YW	ADG	MILK	ME	HPG	CEM	STAY	MARB	YG	CW	REA	FAT
82	37	45	10	-0.5	60	105	.28	20	10	11	7	14	.49	.05	18	-.09	-.01
64%	84%	24%	74%	71%	45%	25%	11%	87%	85%	61%	58%	75%	27%	38%	59%	83%	6%

Final cow in our offering. She is a C-BAR ANTICIPATION daughter with very solid numbers. Put her to work in your pasture. She is bred to a Seneca son Reg # 4379383.



SRA

SCHWEITZER RED ANGUS

Austin Schweitzer

2325 A St Road

Milford, NE 68405



This sale will be broadcast live on the internet.

DVAuction
Broadcasting Real-Time Auctions

Real time bidding & proxy bidding available.



FOLLOW US ON FACEBOOK OR ONLINE AT SCHWEITZERREDANGUS.COM

AUSTIN J SCHWEITZER 402-641-8275 SCHWEITZERREDANGUS@GMAIL.COM