

SRA

SCHWEITZER RED ANGUS



ANNUAL BULL AND HEIFER SALE

MARCH 19

PLEASANT DALE, NE | 1:00 PM

BROADCAST ON DVAUCTION

Now Selling Black Angus Bulls!



CONTACT US

Austin Schweitzer 402-641-8275

SALE DETAILS

Sale will be March 19 at Tucker Cattle Company, 2027 A Street Road, Pleasant Dale, Nebraska. Look for signs on the highway. Sale will be rain or shine. From I-80 Milford Exit go South 1 mile to A St Road. Go 2.5 East and you will arrive!

Friday March 18th

5:00 to Dark Animal Viewing

Saturday, March 19th

9:00 to 1:00 Animal Viewing

12:00 Lunch

1:00 Sale Time

SALE SUPPORT

Tracy Harl, <i>Auctioneer</i>	402-469-3852
Pat Kroese, <i>Ring Man</i>	402-741-2452
Randy Rasby, <i>Ring Man - Livestock Plus</i>	308-539-6195
Cale Hinrichsen, <i>Red Angus Association</i>	785-456-3969

SALE DAY PHONE NUMBERS

Austin Schweitzer.....	402-641-8275
Jay Wolverton, <i>Veterinarian & Consignor</i>	402-641-3745
Chris Woerner, <i>Simmental Bull Consignor</i>	402-641-8555
Cordell Riley, <i>SRA Herdsman</i>	402-641-9031
Brad Tucker, <i>Sale Consultant and Host</i>	402-314-4488
Kaci Toelle, <i>DV Auction</i>	308-214-0950

ONLINE PARTNER

Find ALL videos and pictures on DV Auction. Real-time bidding available online on day of sale.

This sale will be broadcast live on the internet.



Real time bidding & proxy bidding available.

AUCTION FORMAT

All Stock will be available for view on Sale Day and the night before at Tucker Cattle Company. Bulls will be sold in a format where each lot will be running across the TV Screen in the Sale arena in a normal auction format as well as online at the same time.

SETTLEMENT AND DELIVERY

Bull delivery is available up to 250 miles. However, we will work with anyone on transportation. Sale day pick up is preferred. We will feed the bulls for you at the normal feed yard cost starting April 1. All females must go home on sale day unless other arrangements are made.

HEALTH / GUARANTEE

All bulls have received complete parasite control and modified live vaccine. All bulls are 100% guaranteed for soundness and fertility for the breeding season. Each bull has had a breeding soundness certificate from Dr. Jay Wolverton from the Seward Animal Hospital. As soon as the bulls are paid for the insurance will need to be on the new owners if anything were to happen to the bull after the sale.

EPDS

All EPDs are current on the purebred animals as of February 15, 2022 from the Red Angus association. Refer to page four to give you the details and meaning of each EPD. If you need any other additional information on a bull do not hesitate to ask.

ULTRASOUND INFORMATION

All bulls have been scanned and information will be available sale day.

Welcome

Thank You for your interest in Schweitzer Red Angus. As we prepare for our sixth year selling seed-stock the cattle market is wild! As I type this today (2-15-2022) we had a pen of fat cattle weigh 1,623 lbs. and bring \$2223.51 per head (Live Weight Sale). Also, in the same week we sold our steers that did not make the sale that weighed 1,037 lbs. and brought over \$1,460. The market is hot and this is the first time in six years we can tell any story like that! It's our time as beef producers after what we have been through the last few years.

At Schweitzer Red Angus we continue to improve our herd to benefit yours. 2022 marks the first year we are focusing 100% on SRA and our family feed yard. While this has always been the goal it's finally here and we hope it pays dividends for all customers involved with Schweitzer Red Angus. We prepared for this event in 2021 and currently have over 50 bull calves on the ground by February 15th that are all A.I. or ET. We have watched the industry and learned what superior genetics can do for our customers herd and we have followed that path. Our Embryo Transfer program calves are just starting to hit the ground which we believe will be the key to taking performance to a whole new level in a shorter time period. After all, if you have a herd sire success why not replicate it as soon as possible instead of waiting for the next home run!

Now more than ever as commercial producers ourselves, we know details equal performance. We believe using the EPD's to select a herd sire that fits your herd can produce huge dividends the first year. For example, are you weaning calves and taking them straight to market? If so, pick a bull with high WW, ADG and YW and hit your goals. Numbers are always important but not more than the physical appearance and movement that your next herd sire represents when you lay eyes on him. We can look at all the fancy numbers we want but if the bull isn't easy fleshing, free in his moment, he isn't going to do very well for our customers goals which leads to not doing well for our program.

Although cattle prices are high so are input prices. How are you going to maximize each cow unit? We believe each cow unit is maximized by using a superior bull and that's why we are in the business.

If you are ever in the area, we always welcome customers to our place. We want to learn from you and what you need in your program for us to stay educated with the reality of the cattle industry. You are welcome anytime! All scanning information and final weights will be available a week before the sale for your study. They are not in the catalog currently. Please join us March 19th to see what we have to offer. We sincerely appreciate your interest!

Sincerely, Austin

Austin J Schweitzer
Schweitzer Red Angus
402-641-8275
schweitzerredangus@gmail.com

Thank you to our Partners and Sponsors

Craig Lundstrom – Partnership Herd at Cedar Bluffs Ranch
Jeff Borgmann Family – SRA backgrounding and Embryo Partners
Russ, Nick, and Brandon Kovar – Embryo Partnership Cooperator
Harvey Schweitzer – Embryo Partnership Cooperator
Wehrs Feed Yard – Bull and heifer development
Seward Animal Hospital – Animal Health
Kyle Vanderpool – Midwest PMS Nutritionist
Chuck Buam – Boehringer Ingelheim Sale Sponsor
KAW Red Angus – Seward NE
Brad and Vicki Tucker/ Tucker Cattle Company-
Sale Host and SRA Heifer Development

MARCH 19

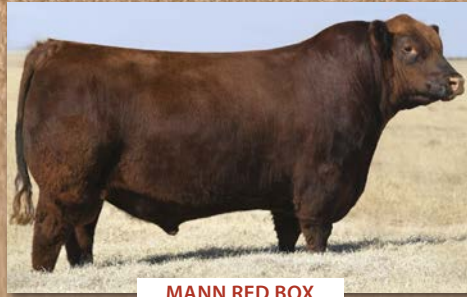
**PLEASANT DALE, NE | 1:00 PM
BROADCAST ON DVAUCTION**



REFERENCE SIRES



KJHT POWER TAKE OFF



MANN RED BOX



WFL PROFIT MAKER



PROFIT BUILDER



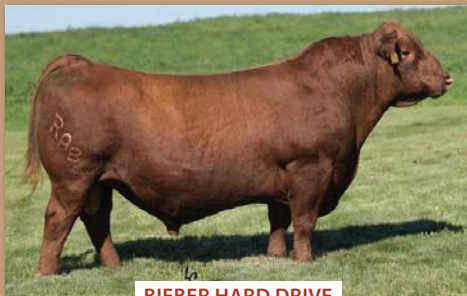
DOMAIN



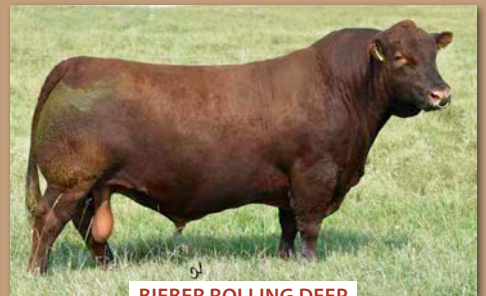
REDEMPTION



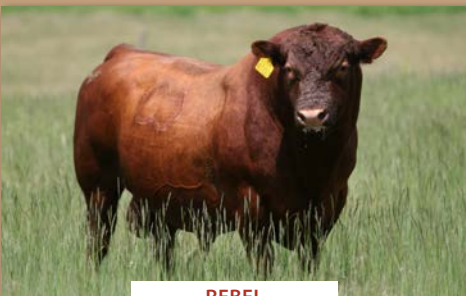
KAW RAGNAR



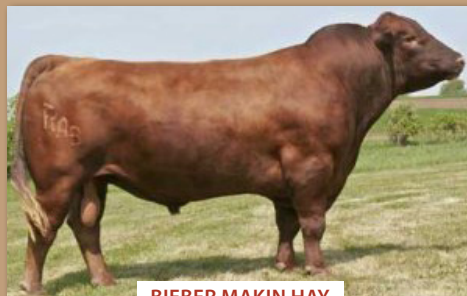
BIEBER HARD DRIVE



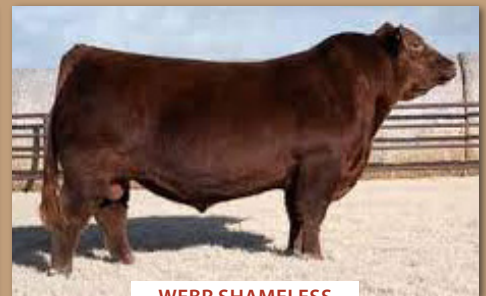
BIEBER ROLLING DEEP



REBEL



BIEBER MAKIN HAY



WEBR SHAMELESS

AND MANY MORE!

RED ANGUS GUIDE TO EPDS

ProS - An all-purpose index that covers economically relevant traits across all aspects of the beef supply chain from conception to carcass.

HerdBuilder (HB) - Need bulls for developing a profitable cowherd and maximizing the value of marketed progeny? Select a bull with a high HB value.

Producers selecting bulls to develop profitable replacement females and maximize the value of non-replacement marketed progeny should incorporate the HerdBuilder Index into their selection decisions.

The HerdBuilder Index is built using the following scenario:

- Red Angus bulls mated to cows and heifers
- Replacement heifers retained from within the herd
- All remaining progeny sold on a quality-based carcass grid

Given that replacement heifers are retained, significant influence is placed on the obvious maternal ERTs of Stayability, Heifer Pregnancy and Calving Ease. Additionally, with all remaining progeny sold on a quality-based carcass grid, Marbling, Yield Grade and growth EPDs also impact the HerdBuilder Index.

GridMaster Index (GM) - If you market all of your calf crop and want to increase the value of that calf crop, select a bull with a high GM value to maximize your profit.

Use the Gridmaster Index if your operation's primary goal is maximizing profitability of feeders in the feed yard and on the rail. The Gridmaster Index is built using the following scenario:

- Red Angus bulls mated to cows
- All progeny sold on a quality-based carcass grid

Marbling, Yield Grade and growth EPDs are the traits of primary importance in the GridMaster Index.

Calving Ease Direct (CED) - Breeding Heifers? Select bulls with a high CED to increase the probability that the heifers will calve unassisted.

Birth Weight (BW) - Predicts differences in birth weight. BW is included in the CED EPD, so simplify your decisions by selecting bulls based on CED instead of BW.

Weaning Weight (WW) and Yearling Weight (YW) - Predicts differences in weight at weaning and yearling. While selection based on these growth measures can increase your payweight, be cautious what the bull's other EPDs are.

Milk - Predicts differences in weaning weight in daughters progeny due to milk production.

Maintenance Energy (ME) - Selecting bulls with a lower ME EPD will decrease the amount of feed his daughters will require to maintain body weight.

Heifer Pregnancy (HPG) - Retaining heifers? Select bulls with a high HPG to increase the percentage of exposures that result in a calving observation.

Calving Ease Maternal (CEM) - Another number to pay attention to if you are retaining heifers. Selecting bulls with a high CEM will increase the probability of those daughters calving unassisted.

Stayability (STAY) - The most important trait if your goal is developing cows that stay productive, thus increasing your profitability. Bulls that have a high Stay EPD are expected to sire daughters that remain productive in the herd until at least 6 years of age.

Marbling Score (Marb) - Select bulls with high Marb EPD to increase the number of progeny that grade Choice or Prime.

Yield Grade (YG) - Marketing calves on a grid? Placing selection pressure on YG EPD will decrease the number of YG discounts on grid-marketed progeny.

Carcass Weight (CW) - Selecting bulls with a high CW EPD will increase the weight of the hanging carcass, which directly impacts revenue.

Rib Eye Area (REA) - Need to add muscle? Select bulls with a high REA EPD to increase rib eye area, which favorably increases Yield Grade.

Backfat (Fat) - Need to reduce waste in carcasses? Select bulls with a low Fat EPD to reduce backfat, which favorably increases Yield Grade.

EPD AVERAGES + RANGES (SPRING 2022)

	ProS	HB	GM	CED	BW	WW	YW	ADG	DMI	MILK	ME	HPG	CEM	STAY	MARB	YG	CW	REA	FAT
Min.	-157	-157	-94	-2	-12.9	-15	-43	-.17	-.65	1	-35	-5	-9	-3	-.63	-1.09	-70	-1.11	-.22
Avg.	86	51	36	13	-1.7	61	99	.23	1.44	25	3	11	7	15	.42	.06	23	.13	.02
Max.	227	147	149	25	9.9	116	203	.56	3.6	46	37	25	18	28	1.59	.46	112	2.13	.12

WHICH BULLS ARE GOOD FOR HEIFERS?

EPD	Recommended for Hfs	Acceptable For Hfs	Not for Heifers	BREED AVG
CE Calving Ease	greater than 10	10-12	less than 10	-1.10
BW Birth Weight	less than 1	1-2.5	2.5 or higher	0.12

BREEDING AGE BY MAY 15TH TURN OUT 16 Months - ★ 15 Months - ★ 14 Months - ★

CE - Indicates a bull we believe is heifer safe



Lot 1

1 SRA REDEMPTION 1926

REG: 4457393 / DOB: 1/14/21 / TAT: 1926 / BREED: 100% AR

BECKTON NEBULA P P707
BROWN JYJ REDEMPTION Y1334
 JYJ MS JOLENE W16

RED CROWFOOT OLE'S OSCAR
SRA OLYS KATY 9262
 HLH MS CONQUEST 5054 3262

BECKTON NEBULA M045
 BECKTON LANA M809 EP
 LJC MISSION STATEMENT P27
 HXC JOLENE R548
 MLK CRK CUB 722
 RED CROWFOOT OMEGA 9179J
 HXC CONQUEST 4405P
 HLH MS SHY ANN 709 5054



ACT BW	82 lbs.
ADJ WW	821 lbs.
ADJ YW	1303 lbs.

ProS	HB	GM	CED	BW	WW	YW	ADG	MILK	ME	HPG	CEM	STAY	MARB	YG	CW	REA	FAT
118	62	55	13	-2.7	76	125	.30	28	6	11	7	17	.66	.11	29	.07	.02
11%	30%	13%	.42%	32%	5%	5%	7%	21%	71%	57%	46%	29%	8%	77%	25%	62%	59%

Redemption 1926 - A real herd bull prospect to start off the sale, this Redemption son has the bone, body mass and thickness that will cover a lot of cows! He's in the top 5-7% on WW, YW & ADG, this guy will put pounds on your feeder calves and performance in carcass quality.



Lot 2

2 WKK-SRA PROFITMAKER 1610E

REG: 4481249 / DOB: 3/2/21 / TAT: 1610E / BREED: 100% AR

WFL MERLIN 018A
WFL PROFITMAKER E7030
 WFL PROSPECT

BIEBER HARD DRIVE Y120
BIEBER SUSIE 610E
 BIEBER SUSIE 254A

LJC MERLIN T179
 WFL COMMITMENT 042Y
 LSF PROSPECT 2035Z
 WFL HOBO 140Z
 LACY GOLD BAR 8123
 BIEBER LAURA 158W
 BIEBER ROUSE SAMURAI X22
 BIEBER SUSIE 217W



ACT BW	90 lbs.
ADJ WW	670 lbs.
ADJ YW	1250 lbs.

ProS	HB	GM	CED	BW	WW	YW	ADG	MILK	ME	HPG	CEM	STAY	MARB	YG	CW	REA	FAT
105	58	46	16	-5.4	64	98	.21	26	-5	12	8	14	.49	-.04	24	.43	.01
25%	38%	27%	.12%	4%	33%	45%	59%	41%	17%	27%	32%	70%	30%	9%	45%	62%	59%

Here's a heifer bull at a -5.4 BW that by no means lacks performance. Out of a Bieber Hard Drive daughter and WFL Profitmaker E7030 this bull has the pedigree to produce some outstanding feeder calves with exceptional carcass merit.



Lot 3

3 SRA BIEBER MAKING HAY 16116

REG: 4457325 / DOB: 2/2/21 / TAT: 16116 / BREED: 100% AR

BIEBER MAKE MIMI 7249
BIEBER MAKIN HAY 9913
 BIEBER ADELLE 8958

BECKTON EPIC R397 K
TBS EPIC DAY 6116
 TBS DOOR IS DAY 015

BJR MAKE MY DAY 981
 BIEBER SIRENA 6708
 BIEBER TITAN 6894
 BIEBER ADELLE 7226
 BECKTON EPIC K F075
 BECKTON KIT F468 JL
 TBS SENSATION 8055
 TBS DOOR IS DAY 777



ACT BW	90 lbs.
ADJ WW	626 lbs.
ADJ YW	1244 lbs.

ProS	HB	GM	CED	BW	WW	YW	ADG	MILK	ME	HPG	CEM	STAY	MARB	YG	CW	REA	FAT
105	60	45	9	0.1	67	109	.26	19	8	9	9	17	.36	.10	38	.19	.01
24%	34%	30%	.88%	84%	22%	23%	25%	95%	78%	81%	15%	29%	61%	70%	7%	34%	45%

A power bull that has the look of a real herd sire. He's long, deep through his flank and thick across his stop. Proving his all around performance by boosting 7 traits in the top 25% of the industry average this bull will really compliment any cow herd.



Lot 3

4 WKK-SRA PROFITMAKER 1489F

REG: 4481247 / DOB: 2/19/21 / TAT: 1489F / BREED: 100% AR

WFL MERLIN 018A
WFL PROFITMAKER E7030
 WFL PROSPECT

BIEBER LET'S ROLL B563
BIEBER CHINOOK 489F
 BIEBER CHINOOK 158Y

LJC MERLIN T179
 WFL COMMITMENT 042Y
 LSF PROSPECT 2035Z
 WFL HOBO 140Z
 BIEBER ROLLIN DEEP Y118
 BASIN PRIMROSE 2043
 MESSMER PACKER S008
 BASIN CHINOOK W043



ACT BW	81 lbs.
ADJ WW	653 lbs.
ADJ YW	1208 lbs.

ProS	HB	GM	CED	BW	WW	YW	ADG	MILK	ME	HPG	CEM	STAY	MARB	YG	CW	REA	FAT
107	81	26	15	-4.7	64	96	.20	27	1	13	8	18	.43	.02	17	.32	.04
22%	7%	73%	.16%	8%	35%	50%	67%	35%	36%	13%	26%	17%	43%	26%	72%	13%	85%

A heifer bull deluxe sired by Profitmaker with a proven pedigree behind the maternal grandsire of Bieber Let's Roll, here's a bull with all the bells and whistles. With solid EPD's across the board and a top 7% for HerdBuilder this guy will make some great replacements!

5 SRA REDEMPTION 1957

REG: 4457383 / DOB: 1/18/21 / TAT: 1957 / BREED: 100% AR

BECKTON NEBULA P P707
BROWN JYJ REDEMPTION Y1334
JYJ MS JOLENE W16

BECKTON NEBULA M045
BECKTON LANA M809 EP
LJC MISSION STATEMENT P27
HXC JOLENE R548

GGP
CE ★

FEDDES BIG SKY R9
SRA MISS BIG SKY 9574
LMG MISS MTX 5574

BIEBER MAKE MIMI 7249
FEDDES LAKINA 310
LMG GILLS INDEED 1603
LMG MISS MTX 1364

ACT BW 82 lbs.
ADJ WW 765 lbs.
ADJ YW 1310 lbs.

ProS	HB	GM	CED	BW	WW	YW	ADG	MILK	ME	HPG	CEM	STAY	MARB	YG	CW	REA	FAT
120	70	50	13	-3.1	68	108	.25	27	4	13	7	17	.56	.08	33	.12	.00
9%	17%	21%	.48%	25%	21%	23%	30%	28%	57%	19%	48%	25%	18%	57%	15%	50%	23%

The Redemption son's never disappoint. This long bodied, deep sided bull has all the bells and whistles with a top 9% in ProS and top 20% in growth and carcass traits, you can't ask for much more in a bull that will do it all!



Lot 5

6 SRA PROFITBUILDER 199

REG: 4457299 / DOB: 1/21/21 / TAT: 199 / BREED: 100% AR

LSF TAKEOVER 9943W
H2R PROFITBUILDER B403
BROWN MS P707 Y6674

HXC CONQUEST 4405P
LSF WIDELOAD R5014 U8061
BECKTON NEBULA P P707
BROWN MS MISSION STMT T6963

GGP
★

RRA ROLL TIDE 135 355
RRA LASSIE 51X G139
BADLANDS LASSIE 51X

RRA CRIMSON TIDE 135
MLK CRK LAKOTA 095
RD TER-RON FULLY LOADED 540R
SIX MILE LASSIE 377P

ACT BW 81 lbs.
ADJ WW 683 lbs.
ADJ YW 1294 lbs.

ProS	HB	GM	CED	BW	WW	YW	ADG	MILK	ME	HPG	CEM	STAY	MARB	YG	CW	REA	FAT
94	37	57	11	-1.7	66	110	.28	21	6	13	7	12	.57	.10	31	.11	.02
41%	80%	11%	.73%	52%	28%	21%	15%	87%	66%	13%	46%	87%	17%	71%	20%	52%	48%

Here's a power bull with strong performance from birth to yearling. With a top 11% in GridMaster, top 20% in MARB and CW this guy will produce some serious feeder calves.



Lot 6

7 SRA ROLLING DEEP 1571

REG: 4457345 / DOB: 2/4/21 / TAT: 1571 / BREED: 100% AR

BIEBER ROLLIN DEEP Y118
SRN ALISTAR 1635
MESSMER LINDA T112

BIEBER ROOSEVELT W384
BIEBER TILLY 399W
BECKTON LANCER F442 T
MESSMER LINDA 2322

GGP
★

LMG GILLS INDEED 8845
LMG ROXIE 5715
LMG MISS ROXIE 3258

RED TOWAW INDEED 104H
LMG DYNETTE 3041
LMG GILLS INDEED 8845
LMG ROXIE 4037

ACT BW 97 lbs.
ADJ WW 701 lbs.
ADJ YW 1292 lbs.

ProS	HB	GM	CED	BW	WW	YW	ADG	MILK	ME	HPG	CEM	STAY	MARB	YG	CW	REA	FAT
73	50	22	9	1.3	66	105	.24	26	4	9	6	16	.31	.01	21	.18	.00
77%	54%	80%	.92%	94%	26%	31%	39%	41%	55%	81%	66%	45%	75%	21%	56%	37%	23%

1571 has been an eye catcher all year, phenotypically correct from hooks to pins, this bull will cover a lot of cows. His growth numbers proves he'll add pounds to your calves at weaning and a bonus on the rail.



Lot 7

8 KAW BOXED CODE RED 104 ET

REG: 4468881 / DOB: 1/14/21 / TAT: 104 / BREED: 100% AR

SLGN WIDELOAD 920W
MANN RED BOX 55C
PELTON MISS AJA 0839U

UBAR HIGH CAPACITY 224
MEADO-WEST PERSUASION
5L NORSEMAN KING 2291
PELTONS MISS IDA 0547R

GGP
★

PIE CODE RED 9058
KAW LAGERTHA 581
KAW M26P BECTORIA 963

VGW GAME PLAN 508
PIE STORMY 541
RED FINE LINE MULBERRY 26P
JAG LANA 516R

ACT BW 81 lbs.
ADJ WW 790 lbs.
ADJ YW -

ProS	HB	GM	CED	BW	WW	YW	ADG	MILK	ME	HPG	CEM	STAY	MARB	YG	CW	REA	FAT
73	45	28	11	-0.1	65	104	.25	23	12	13	7	15	.33	.02	26	.20	.01
77%	66%	69%	.73%	81%	29%	31%	35%	72%	93%	20%	44%	61%	70%	28%	37%	32%	26%

Lots 8, 9 and 10 are ET produce of a top donor cow KAW LAGERTHA 581. With Limited showing she was undefeated as a Red Angus yearling. As a cow with progeny aside she has made her way to the backdrop at the Kansas State Fair as Senior Division Female Champion and at the Iowa State Fair not only as the Senior Division Reserve Champion Female but as the female responsible for the Champion Produce of Dam pair.

Consigned by KAW RED ANGUS



Lot 8



Lot 9

9 KAW BOXED IN RED 106 ET

REG: 4468883 / DOB: 1/18/21 / TAT: 106 / BREED: 100% AR

SLGN WIDELoad 920W
MANN RED BOX 55C
 PELTON MISS AJA 0839U

PIE CODE RED 9058
KAW LAGERTHA 581
 KAW M26P BECTORIA 963

UBAR HIGH CAPACITY 224
 MEADO-WEST PERSUASION
 5L NORSEMAN KING 2291
 PELTON'S MISS IDA 0547R
 VGW GAME PLAN 508
 PIE STORMY 541
 RED FINE LINE MULBERRY 26P
 JAG LANA 516R



ACT BW	82 lbs.
ADJ WW	779 lbs.
ADJ YW	-

ProS	HB	GM	CED	BW	WW	YW	ADG	MILK	ME	HPG	CEM	STAY	MARB	YG	CW	REA	FAT
73	45	28	11	-0.1	65	104	.25	23	12	13	7	15	.33	.02	26	.20	.01
77%	66%	69%	.73%	81%	29%	31%	35%	72%	93%	20%	44%	61%	70%	28%	37%	32%	26%

The Sire MANN REDBOX has set a new level for depth and phenotype across the Red Angus breed. We chose to use him to flush our best performing female and we hit it! All three of these bulls will produce top performing offspring worthy of "front pasture Phenotype."

Consigned by KAW RED ANGUS



Lot 10

10 KAW BOXED IN CODE 108 ET

REG: 4468885 / DOB: 1/24/21 / TAT: 108 / BREED: 100% AR

SLGN WIDELoad 920W
MANN RED BOX 55C
 PELTON MISS AJA 0839U

PIE CODE RED 9058
KAW LAGERTHA 581
 KAW M26P BECTORIA 963

UBAR HIGH CAPACITY 224
 MEADO-WEST PERSUASION
 5L NORSEMAN KING 2291
 PELTON'S MISS IDA 0547R
 VGW GAME PLAN 508
 PIE STORMY 541
 RED FINE LINE MULBERRY 26P
 JAG LANA 516R



ACT BW	86 lbs.
ADJ WW	829 lbs.
ADJ YW	-

ProS	HB	GM	CED	BW	WW	YW	ADG	MILK	ME	HPG	CEM	STAY	MARB	YG	CW	REA	FAT
73	45	28	11	-0.1	65	104	.25	23	12	13	7	15	.33	.02	26	.20	.01
77%	66%	69%	.73%	81%	29%	31%	35%	72%	93%	20%	44%	61%	70%	28%	37%	32%	26%

Consigned by KAW RED ANGUS



Lot 11

11 SRA OLD RED BOX 1214

REG: 4457249 / DOB: 1/27/21 / TAT: 1214 / BREED: 100% AR

SLGN WIDELoad 920W
MANN RED BOX 55C
 PELTON MISS AJA 0839U

RED LAZY MC COWBOY CUT 26U
KAW CC LANAS CUT 2141
 JAG LANA 516R

UBAR HIGH CAPACITY 224
 MEADO-WEST PERSUASION
 5L NORSEMAN KING 2291
 PELTON'S MISS IDA 0547R
 RED LAZY MC STOUT 30S
 RED LAZY MC STAR 185M
 BECKTON LANCER F442 T
 SOR FIREFLY RG 9549J



ACT BW	89 lbs.
ADJ WW	711 lbs.
ADJ YW	1238 lbs.

ProS	HB	GM	CED	BW	WW	YW	ADG	MILK	ME	HPG	CEM	STAY	MARB	YG	CW	REA	FAT
55	33	22	11	0.6	67	106	.25	19	11	11	7	14	.26	.04	28	.30	.02
94%	86%	80%	.77%	89%	24%	28%	35%	94%	92%	55%	58%	72%	87%	36%	28%	16%	61%

A MANN RED BOX son that has performance written all over him with a top 24-28% in WW and YW. With strong carcass EPD's this bull will no doubt sire some outstanding feeder cattle.



Lot 12

12 SRA KARGO 1318B

REG: 4457397 / DOB: 2/6/21 / TAT: 1001 / BREED: 100% AR

RED RINGSTEAD KARGO 215U
TWG TANGO 156D
 DAMAR THORA Y156

BAR DOUBLE M CHIEF 97N
QUEEN 128R
 QUEEN 417F

RED RINGSTEAD KARGO 107M
 RED RINGSTEAD MS EQUAL 589P
 RED 6 MILE FULL THROTTLE171T
 DFRA LANA 113
 CRESCENT CREEK CHIEF 43J
 BAR DOUBLE M JANE 4H
 KING 27D
 QUEEN 167D



ACT BW	82 lbs.
ADJ WW	708 lbs.
ADJ YW	1230 lbs.

ProS	HB	GM	CED	BW	WW	YW	ADG	MILK	ME	HPG	CEM	STAY	MARB	YG	CW	REA	FAT
80	61	18	15	-2.1	61	95	.21	24	9	4	8	17	.14	15	.14	.00	
65%	32%	86%	.20%	43%	45%	53%	62%	59%	84%	99%	32%	22%	98%	10%	80%	45%	10%

A Tango son that is phenotypically correct and a stand out since weaning. He will work on heifers and fill in all the dots from Calving Ease, HerdBuilder, Yield Grade and Fat %. Tango was a reserve national champion bull in 2016.

13 SRA ROLLING DEEP 1715

REG: 4457361 / DOB: 3/1/21 / TAT: 1715 / BREED: 100% AR

PIE CODE RED 9058
KAW RAGNAR 527
 KAW M26P BECTORIA 963

VGW GAME PLAN 508
 PIE STORMY 541
 RED FINE LINE MULBERRY 26P
 JAG LANA 516R



ANDRAS NEW DIRECTION R240
AJS JAG ND 7156
 JAG RUBY 106Y

ANDRAS IN FOCUS B152
 ANDRAS KURUBA B111
 BROWN COMMITMENT S7206
 JAG RED ROSE 614S

ACT BW	92 lbs.
ADJ WW	700 lbs.
ADJ YW	1337 lbs.



Lot 13

ProS	HB	GM	CED	BW	VW	YW	ADG	MILK	ME	HPG	CEM	STAY	MARB	YG	CW	REA	FAT
108	70	37	11	-0.7	62	98	.22	27	0	13	6	17	.48	.09	22	-.03	.01
21%	17%	47%	72%	71%	40%	46%	54%	35%	35%	16%	66%	27%	32%	65%	53%	82%	33%

1715 boasts a powerful combination in his pedigree with several top EPDs including a top 21% ProS, 17% HB and 27% in Stayability which proves he'll make some great replacements! 1715 also had the highest yearling weight at 1,370 lbs.

14 SRA REDEMPTION 1750

REG: 4457351 / DOB: 1/26/21 / TAT: 1750 / BREED: 99.9% AR 0.1% XX

BECKTON NEBULA P P707
BROWN JYJ REDEMPTION Y1334
 JYJ MS JOLENE W16

BECKTON NEBULA M045
 BECKTON LANA M809 EP
 LJC MISSION STATEMENT P27
 HXC JOLENE R548



TROTTERS STRONGHOLD 156
AJS SRA STONGHOLD 7503
 GWR RUBY 503

LJT CITADEL 812
 LJT PEARL 579
 SCHULER ENVOY 2115Z
 JAG RUBY 123Y

ACT BW	84 lbs.
ADJ WW	764 lbs.
ADJ YW	1237 lbs.

ProS	HB	GM	CED	BW	VW	YW	ADG	MILK	ME	HPG	CEM	STAY	MARB	YG	CW	REA	FAT
103	51	52	13	-2.3	66	109	.27	22	3	10	8	15	.57	.05	28	.16	.01
27%	53%	18%	45%	40%	27%	22%	19%	22%	47%	72%	37%	57%	17%	44%	29%	40%	35%

A Redemption son with exceptional growth from birth to weaning. This bull's performance and carcass traits are exceptional and will bring consistency in the feedlot!

16 KAW FLAMETHROWER 051

REG: 4279699 / DOB: 6/2/2020 / TAT: 51 / BREED: 100% AR

BECKTON NEBULA P P707
BROWN JYJ REDEMPTION Y1334
 JYJ MS JOLENE W16

BECKTON NEBULA M045
 BECKTON LANA M809 EP
 LJC MISSION STATEMENT P27
 HXC JOLENE R548



PIE CODE RED 9058
KAW MS FIREBALL 468
 KAW M26P BECTORIA 963

VGW GAME PLAN 508
 PIE STORMY 541
 RED FINE LINE MULBERRY 26P
 JAG LANA 516R

ACT BW	76 lbs.
ADJ WW	-
ADJ YW	-

ProS	HB	GM	CED	BW	VW	YW	ADG	MILK	ME	HPG	CEM	STAY	MARB	YG	CW	REA	FAT
111	66	45	13	-2.7	62	104	.26	26	4	13	8	16	.51	.08	24	-.05	.00
18%	24%	30%	45%	32%	42%	33%	24%	43%	56%	13%	35%	38%	26%	60%	42%	86%	15%

TWO YEAR OLD BULL. KAW FLAMETHROWER 051 is a deep dark red medium framed heifer bull. His dam KAW FIREBALL 468 has become our most successful female in the show ring and producing offspring. Her ET yearling bull was KAW's top selling bull in the 2021 sale. This bull's sire the legendary BROWN REDEMPTION is the most proven calving ease bull in the Red Angus breed. Don't miss this opportunity to combine exceptional phenotype and calving ease. Trich tested negative. Recommended for heifers and cows.

Consigned by KAW RED ANGUS



Lot 16

17 KAW 076 SILVER STREAK

REG: 4299637 / DOB: 3/29/2020 / TAT: 76 / BREED: 100% AR

DKF ELIMINATOR 15A
RED DKF RAZOR 55C
 DKF MISS NET WORTH 21A

S A V ELIMINATOR 9105
 RED DKF MISS POWER 17P
 S A V NET WORTH 4200
 DKF MISS POWER UP 95X

ACT BW	98 lbs.
ADJ WW	1001 lbs.
ADJ YW	-

LCC CHEYENNE B221L
JAG ROSE 806U
 LONE ROCK ROSE HWN 976Z

BFC CHEROKEE CNYN 4912
 HXC 701G
 FEL HEAVENLY BREW 7124
 FEL DYNA ROSE 762G

ProS	HB	GM	CED	BW	VW	YW	ADG	MILK	ME	HPG	CEM	STAY	MARB	YG	CW	REA	FAT
93	59	34	11	-0.9	66	104	.24	30	7	12	6	17	.37	.21	35	-.07	.03
42%	37%	55%	71%	67%	28%	32%	39%	9%	74%	24%	72%	31%	60%	98%	10%	88%	78%

TWO YEAR OLD BULL. KAW SILVER STREAK 076 is an attractive combination of maternal genetics and muscle dimension. His dam JAG 806U at 13 years of age has 31 offspring - most of which are still in production. DKF RAZOR adds growth and muscle on a big strong structure. This is a bull that will build females for your herd. Trich tested negative. Recommended for cows acceptable for heifers. We used him on both last Spring.

Consigned by KAW RED ANGUS



Lot 17

BLACK ANGUS

Genomic ranks will be available on sale day.



Lot 18

18 SRA POSS MAVERICK 127

REG: 20265647 / DOB: 01/30/21 / TAT: 127 / BREED: Angus

Basin Payweight 1682
Poss Maverick
Poss Pride 5163

S A V Renown 3439
Brookdale Enchantress 27
Brookdale Enchantress 954

Basin Payweight 006S
21AR 0 Lass 7017
Poss Hoover Dam 2509
Poss Pride 9526

Rito 707 of Ideal 3407 7075
S A V Blackcap May 4136
S A V Priority 7283
Enchantress of PR 570-2



ACT BW	86 lbs.
ADJ WW	821 lbs.
ADJ YW	-

CED	BW	WW	YW	SC	DOC	HP	CEM	MILK	\$EN	CW	MARB	REA	FAT	\$M	\$W	\$B	\$C
5	1.1	69	118	-	-	-	6	30	-22	1+47	1+73	1+54	1+039	64	74	144	251
65%	50%	25%	30%	-	-	-	75%	20%	70%	50%	35%	60%	85%	45%	20%	40%	35%

SRA Poss Maverick 127 has been a eye catcher from day one. His sire Poss Maverick has been very impressive in the Angus industry topping Poss Sale a few years back. His power, depth of rib and overall presence is a jaw dropper. The sire Poss Maverick is the number one \$B son of the famous Payweight 1682 which is an elite accomplishment. With a WW of +69 and a YW of +118 you know this bull will add pounds to every calf at weaning time. This bull has an adj. WW of 821 lbs. and is a heifer bull!



Lot 19

19 SRA EB PLUS ONE 1916

REG: 20266138 / DOB: 01/21/21 / TAT: 1916 / BREED: Angus

Connealy Confidence Plus
E&B Plus One
E&B Lady 1023 Precision 936

HFA Batman L35B
Brookdale Jodie 916
Brookdale Jodie 33

Connealy Confidence 0100
Elbanna of Conanga 1209
E&B 1680 Precision 1023
E&B Lady 878 New Design 441

Brookdale Uptown
Soo Line Georgina 1148
S A V Final Answer 0035
Brookdale Jodie 251



ACT BW	76 lbs.
ADJ WW	-
ADJ YW	-

CED	BW	WW	YW	SC	DOC	HP	CEM	MILK	\$EN	CW	MARB	REA	FAT	\$M	\$W	\$B	\$C
13	-0.7	57	99	1+82	1+14	1+13.9	11	26	-8	1+35	1+70	1+51	1+020	74	63	130	243
10%	15%	60%	65%	55%	70%	30%	25%	45%	30%	80%	40%	65%	65%	20%	45%	60%	45%

SRA E&B Plus One sire brought \$68,000 in the 2019 sale in Benoit Kansas. You put this bull and SRA Poss Maverick 127 side by side and its hard to find two better exceptional yearling bulls. This bull has a +100 in YW but also when keeping heifers in mind he is a -.7 on BW. We flushed his mother Brookdale Jodie 916 to Sitz Resilient this year and the calves are utterly exceptional every time. This shows you the value we are showing in his mother. Absolutely exceptional yearling bull.



Lot 20

20 SRA SAV QB 1756A

REG: 20265785 / DOB: 01/25/21 / TAT: 1756A / BREED: Angus

S A V Regard 4863
S A V Quarterback 7933
S A V Blackcap May 3525

Basin Payweight 1682
Brookdale Ann 756
Brookdale Ann 52

S A V Resource 1441
S A V Blackcap May 5530
S A V Final Answer 0035
S A V May 2397

Basin Payweight 006S
21AR 0 Lass 7017
TC Aberdeen 759
Brookdale Ann 440



ACT BW	72 lbs.
ADJ WW	-
ADJ YW	-

CED	BW	WW	YW	SC	DOC	HP	CEM	MILK	\$EN	CW	MARB	REA	FAT	\$M	\$W	\$B	\$C
1+4	1+2.5	1+74	1+126	1+110	1+27	1+13.7	1+2	1+24	-17	1+51	1+23	1+76	1+035	80	75	128	246
70%	80%	15%	20%	35%	15%	30%	95%	60%	55%	40%	90%	30%	80%	10%	20%	65%	40%

These two SAV Quarterback sons are another set of studs. These bulls were twins. We were fortunate to graft SRA SAV QB 1756B to one of our best cows that lost a calf right away. So, both calves got full access to a normal milk intake. Their dam Brookdale Ann is a Basin Payweight 1682 daughter. She has the best heifer calf on our place this year out of Bankroll. The bulls are free in movement great in disposition and have exceptional depth. YW for both is a +125 and WW is a +74. These boys will produce the feedlot kind of cattle that will take ADG to a new level!

21 SRA SAV QB 1756B

REG: 20265787 / DOB: 01/25/21 / TAT: 1756B / BREED: Angus

S A V Regard 4863
S A V Quarterback 7933
 S A V Blackcap May 3525

S A V Resource 1441
 S A V Blackcap May 5330
 S A V Final Answer 0035
 S A V May 2397



Basin Payweight 1682
Brookdale Ann 756
 Brookdale Ann 52

Basin Payweight 006S
 21AR O Lass 7017
 TC Aberdeen 759
 Brookdale Ann 440

ACT BW	68 lbs.
ADJ WW	-
ADJ YW	-

CED	BW	WW	YW	SC	DOC	HP	CEM	MILK	\$EN	CW	MARB	REA	FAT	\$M	\$W	\$B	\$C
1+4	1+2.5	1+74	1+126	1+110	1+27	1+13.7	1+2	1+24	-17	1+51	1+23	1+76	1+.035	80	75	128	246
70%	80%	15%	20%	35%	15%	30%	95%	60%	55%	40%	90%	30%	80%	10%	20%	65%	40%

These two SAV Quarterback sons are another set of studs. These bulls were twins. We were fortunate to graft SRA SAV QB 1756B to one of our best cows that lost a calf right away. So, both calves got full access to a normal milk intake. Their dam Brookdale Ann is a Basin Payweight 1682 Daughter. She has the best heifer calf on our place this year out of Bankroll. The bulls are free in movement great in disposition and have exceptional depth. YW for both is a +125 and WW is a +74. These boys will produce the feedlot kind of cattle that will take ADG to a new level!



Lot 21

22 SRA SITZ RESILIENT 1162

REG: 20266044 / DOB: 01/22/21 / TAT: 1161 / BREED: Angus

Sitz Stellar 726D
Sitz Resilient 10208
 Sitz Miss Burgess 1856

Mohren Substantial 272
 SITZ Pride 200B
 Sitz Top Game 561X
 Sitz Miss Burgess 4381



HA Cowboy Up 5405
Brookdale Progress 1628
 Brookdale Progress 371

HA Outside 3008
 HA Blackcap Lady 1602
 Sitz Upward 307R
 Brookdale Progress 422

ACT BW	82 lbs.
ADJ WW	-
ADJ YW	-

CED	BW	WW	YW	SC	DOC	HP	CEM	MILK	\$EN	CW	MARB	REA	FAT	\$M	\$W	\$B	\$C
9	1	75	136	1+93	1+16	1+14.3	6	28	-25	1+52	1+46	1+56	1+.008	74	77	141	257
30%	45%	15%	10%	45%	60%	25%	75%	30%	80%	35%	65%	60%	45%	20%	15%	45%	30%

SRA Sitz Resilient 1162 is another stud. We used his sire Sitz Resilient 10208 for our embryo program this year. Again, a home run with each calf so far in 2022. BW of a +1, YW +135 and WW of +75, another bull that will add serious gain to your calves at sale time.



Lot 22

23 SRA BROOKDALE MOGUL 1109

REG: 20257205 / DOB: 02/24/21 / TAT: 1109 / BREED: Angus

LD Capitalist 316
Brookdale Mogul
 Brookdale Zara 597

Connealy Capitalist 028
 LD Dixie Erica 2053
 JMB Traction 292
 Brookdale Zara 229



S A V Sensation 5615
Brookdale Jodie 1098
 Brookdale Jodie 289

S A V Registry 2831
 S A V Blackcap May 4136
 S A V Final Answer 0035
 Oaknoll Jodie A220

ACT BW	84 lbs.
ADJ WW	-
ADJ YW	-

CED	BW	WW	YW	SC	DOC	HP	CEM	MILK	\$EN	CW	MARB	REA	FAT	\$M	\$W	\$B	\$C
1+9	1+1	1+63	1+108	1+57	1+19	1+12.2	1+7	1+30	-22	1+36	1+30	1+56	1+.016	65	74	108	205
30%	25%	40%	45%	70%	45%	45%	70%	20%	70%	75%	85%	60%	60%	40%	20%	85%	85%

SRA Brookdale Mogul is another bull option for heifers but excels in gain. With a YW of +108 and WW of +63 he is made to help your calves gain. He is the youngest of the Angus bulls and is still a standout. This bull has a long frame and I believe still has a lot growth ahead of him.



Lot 23

24 SRA SAV PRESIDENT 138

REG: 626367424 / DOB: 02/23/21 / TAT: 138 / BREED: Angus

Coleman Charlo 0256
S A V President 6847
 S A V Blackcap May 4136

O C C Paxton 730P
 Bohi Abigale 6014
 S A V 8180 Traveler 004
 S A V May 2397



S A V Final Answer 0035
Brookdale Progress 38
 Brookdale Progress 1016

Sitz Traveler 8180
 S A V Emulous 8145
 Peak Dot Unanimous 588A
 Brookdale Progress 371

ACT BW	92 lbs.
ADJ WW	-
ADJ YW	-

CED	BW	WW	YW	SC	DOC	HP	CEM	MILK	\$EN	CW	MARB	REA	FAT	\$M	\$W	\$B	\$C
-	-	-	-	-	-	-	-	-	-	-	-	-	-	-	-	-	-

SRA SAV President 138 is the last of our Angus bulls in the lineup. His sire SAV President 6847 was the world record top selling bull in 2017 at \$750,000. This again is one of our younger calves but an absolute standout. We will have all his EPDs at sale time. His mother is a smaller framed Angus cow that gives everything to her calf. Another great option for your next herd sire.



Lot 24



25 WKK-SRA MAXIMUS 1123F

REG: 4481251 / DOB: 2/19/21 / TAT: 1123F / BREED: 100% AR

BIEBER SPARTACUS A193
BIEBER MAXIMUS E294
BIEBER LINCOLN 189A

BIEBER ROUSE SAMURAI X22
BIEBER TILLY 233U
PARINGA IRON ORE E27
BIEBER LINCOLN 321X



BIEBER DRIVEN C540
BIEBER ROSE 123F
BIEBER ROSE 111D

BIEBER HARD DRIVE Y120
BIEBER JOAN 309Y
BIEBER FEDERATION B544
BIEBER ROSE 116B

ACT BW	86 lbs.
ADJ WW	638 lbs.
ADJ YW	1272 lbs.

ProS	HB	GM	CED	BW	WW	YW	ADG	MILK	ME	HPG	CEM	STAY	MARB	YG	CW	REA	FAT
89	45	45	12	-2.1	82	130	.30	24	19	10	7	16	.48	.05	40	.43	.03
48%	66%	31%	.66%	43%	2%	3%	7%	64%	99%	64%	51%	35%	32%	44%	5%	6%	68%

This bull's mother was purchased on the Bieber sale in 2020 with a stellar pedigree and it's bred into this bull with 5 traits in the top 7%. Focused on performance and carcass merit this bull will make outstanding feeder calves.

26 KAW J34 REBEL 110

REG: 4477675 / DOB: 2/13/21 / TAT: 110 / BREED: 99.9% AR 0.1% XX

BECKTON NEBULA P P707
SCHULER REBEL 0029X
SOR RUTH RMR 5055R

BECKTON NEBULA M045
BECKTON LANA M809 EP
BIEBER ROMERO 9136
SOR RUTH NE 0095K



WEBR MAXED OUT 627
SRA J34
RED SIX MILE BAYBERRY 439B

BIEBER ROLLIN DEEP Y118
MISS BHR COPPER D 946
L83 SUPER DUTY 244Z
SIX MILE BAYBERRY 15Z

ACT BW	61 lbs.
ADJ WW	812 lbs.
ADJ YW	-

ProS	HB	GM	CED	BW	WW	YW	ADG	MILK	ME	HPG	CEM	STAY	MARB	YG	CW	REA	FAT
79	58	21	16	-3.5	67	107	.25	35	7	11	9	16	.42	.19	23	-.08	.04
66%	38%	82%	.12%	20%	23%	26%	33%	1%	76%	42%	14%	47%	46%	97%	47%	89%	91%

KAW J34 REBEL 110 is a real curve bender from birth to yearling. From a 61 pound birth weight raised by a heifer he did what all SCHULAR REBEL calves do - grow like crazy. This bull's dam J34 was the top SRA heifer in 2019. His maternal traits, stayability, and calving ease is an opportunity for you to grow your herd replacing with his heifers. Recommended for heifers and cows.

Consigned by KAW RED ANGUS



Lot 26

27 GWR REDEMPTION 101

REG: 4491837 / DOB: 1/24/21 / TAT: 101 / BREED: 100% AR

BECKTON NEBULA P P707
BROWN JYI REDEMPTION Y1334
JYI MS JOLENE W16

BECKTON NEBULA M045
BECKTON LANA M809 EP
LJC MISSION STATEMENT P27
HXC JOLENE R548



GWR GP MR. RIGHT 013
GWR ROBIN 305
GWR NE ROBINETTE 016

GLACIER PIONEER 939
BIEBER SIERRA 5516
JAG NO EQUAL 5807R
MSJ-RRROBINHOOD-444-1031

ACT BW	73 lbs.
ADJ WW	632 lbs.
ADJ YW	-

ProS	HB	GM	CED	BW	WW	YW	ADG	MILK	ME	HPG	CEM	STAY	MARB	YG	CW	REA	FAT
103	61	42	14	-3.8	54	90	.22	26	4	10	7	18	.56	.13	20	-.11	.02
27%	33%	37%	.34%	16%	71%	64%	52%	41%	56%	61%	51%	20%	18%	84%	61%	93%	54%

GWR REDEMPTION 101 is a deep dark cherry red future herd sire with a strong smooth top and structurally correct undercarriage. This bull's dam GWR 305 has been a top producing cow at GWR Red Angus. Like this bull her offspring are sound solid and easy flushing. As a REDEMPTION son with a 14 CED and -3.8 BW EPD this bull promises ultimate calving ease. Recommended for heifers and cows.

Consigned by GWR RED ANGUS



Lot 27

28 SHADY'S HARD DRIVE J48

REG: 4445835 / DOB: 4/11/21 / TAT: J48 / BREED: 100% AR

BIEBER HARD DRIVE Y120
BIEBER HARD DRIVE D427
BIEBER CASHMERE 400B

LACY GOLD BAR 8123
BIEBER LAURA 158W
LSF TAKEOVER 9943W
BIEBER CASHMERE 206Y



MSR A341
SHADY'S MS OLY E174
SHADY'S MS. IMPR. ROB 446

VGW OLY 903
BIEBER LAURA 325Y
LMN IMPRESSIVE ROB1095B
SHADY'S MS GLACIER 108

ACT BW	71 lbs.
ADJ WW	692 lbs.
ADJ YW	1153 lbs.

ProS	HB	GM	CED	BW	WW	YW	ADG	MILK	ME	HPG	CEM	STAY	MARB	YG	CW	REA	FAT
84	38	47	14	-3.6	55	91	.23	27	7	12	7	14	.50	.07	22	.08	.01
57%	79%	27%	.27%	18%	69%	60%	48%	32%	76%	36%	48%	69%	28%	51%	51%	59%	39%

One of two Bieber Hard Drive sons in the sale. Don't look now but he is an April calf! Top 20% in BW and CED he is a heifer bull what doesn't lack opportunity for you calves to gain and weaning time.



Lot 28

29 SHADY'S HARD DRIVE J52

REG: 4445827 / DOB: 4/12/21 / TAT: J52 / BREED: 100% AR

BIEBER HARD DRIVE Y120
BIEBER HARD DRIVE D427
BIEBER CASHMERE 400B

LACY GOLD BAR 8123
BIEBER LAURA 158W
LSF TAKEOVER 9943W
BIEBER CASHMERE 206Y



SILVEIRAS MISSION NEXUS 1378
SHADY'S MS NEXUS E118
SHADY'S MAJOR CHTEAU A7434A

LJC MISSION STATEMENT P27
SILVEIRAS DAORV 8399
SHADY'S HW/CHATEAU 7719
SHADY'S MAJOR LEAGUE 7434

ACT BW	83 lbs.
ADJ WW	769 lbs.
ADJ YW	1218 lbs.

ProS	HB	GM	CED	BW	VW	YW	ADG	MILK	ME	HPG	CEM	STAY	MARB	YG	CW	REA	FAT
82	34	48	12	-1.2	71	117	.29	27	11	11	6	14	.58	.02	27	.28	.02
61%	84%	24%	.61%	62%	13%	11%	11%	28%	91%	50%	66%	71%	16%	28%	34%	18%	47%

Another Bieber Hard Drive son but this guy is all power as you would expect. Top 15% in the breed in WW, YW and ADG. Another April calf we allowed on the sale!



Lot 29

30 KAW COMMON SENSE 102

REG: 4477673 / DOB: 1/23/21 / TAT: 102 / BREED: 100% AR

REDNCJ LAZYM RAMBLINMAN305B
RED LAZYM COMMON SENSE 308E
RED LAZYM MISS FIREFLY 36Z

RED LAZY MC TROOPER 21Y
HXC JOLENE 301N
RED LAZY MC LOOKOUT 153X
RED LAZY MC MISS FIREFLY 31S



RED LAZY MC CC DETOUR 2W
AJS KAW 7141
KAW CC LANAS CUT 2141

RED RMJ REDMAN 1T
RED LAZY MC BESS 12S
RED LAZY MC COWBOY CUT 26U
JAG LANA 516R

ACT BW	79 lbs.
ADJ WW	754 lbs.
ADJ YW	-

ProS	HB	GM	CED	BW	VW	YW	ADG	MILK	ME	HPG	CEM	STAY	MARB	YG	CW	REA	FAT
33	25	8	11	-0.5	57	89	.20	23	-2	6	7	12	.18	.07	13	.04	.02
99%	93%	96%	.73%	75%	62%	66%	69%	72%	26%	99%	60%	84%	96%	51%	83%	68%	64%

KAW COMMON SENSE 102 is a big sided, deep bodied, structurally correct MC COMMON SENSE bull. MC bred cattle are medium framed, efficient, low input in type and kind. KAW 102 is a reflection of his dam's sire MC DETOUR with his stout frame, power and pleasant disposition. This bull's dam is a medium frame, easy flashing and breed back female. Recommended for heifers and cows.

Consigned by KAW RED ANGUS



Lot 30

31 KAW HANK 123 ET

REG: 4440783 / DOB: 3/21/21 / TAT: 123 / BREED: 100% AR

WEBR TC CARD SHARK 1015
WEBR SHAMELESS 34G
EIR Y200

WEBR DOC HOLLIDAY 2N
PFRR MS NYACK 237
BIEBER MAKE MIMI 7249
EIR W211



KAW ARCHIBALD 454
KAW ARI 673
JAG ROSE 806U

BIEBER ROOSEVELT W384
KAW M26P BECTORIA 963
LCC CHEYENNE B221L
LONE ROCK ROSE HVN 9762

ACT BW	64 lbs.
ADJ WW	611 lbs.
ADJ YW	-

ProS	HB	GM	CED	BW	VW	YW	ADG	MILK	ME	HPG	CEM	STAY	MARB	YG	CW	REA	FAT
105	71	35	13	-1.9	57	91	.21	28	3	11	9	18	.30	.15	34	.08	.03
24%	17%	54%	.51%	48%	62%	61%	59%	22%	51%	56%	19%	19%	79%	90%	12%	59%	72%

KAW 123 & 125 combine calving ease and growth in a most attractive package.

Consigned by KAW RED ANGUS



Lot 31

32 KAW HORUS 125 ET

REG: 4468887 / DOB: 3/12/21 / TAT: 125 / BREED: 100% AR

WEBR TC CARD SHARK 1015
WEBR SHAMELESS 34G
EIR Y200

WEBR DOC HOLLIDAY 2N
PFRR MS NYACK 237
BIEBER MAKE MIMI 7249
EIR W211



KAW ARCHIBALD 454
KAW ARI 673
JAG ROSE 806U

BIEBER ROOSEVELT W384
KAW M26P BECTORIA 963
LCC CHEYENNE B221L
LONE ROCK ROSE HVN 9762

ACT BW	64 lbs.
ADJ WW	611 lbs.
ADJ YW	-

ProS	HB	GM	CED	BW	VW	YW	ADG	MILK	ME	HPG	CEM	STAY	MARB	YG	CW	REA	FAT
105	71	35	13	-1.9	57	91	.21	28	3	11	9	18	.30	.15	34	.08	.03
24%	17%	54%	.51%	48%	62%	61%	59%	22%	51%	56%	19%	19%	79%	90%	12%	59%	72%

Their dam KAW ARI has been flushed several times and has always produced the attractive cat-like movers. Matched with REDEMPTION, WEBR MAXED OUT and WEBR SHAMELESS she has been extraordinary. WEBR SHAMELESS was named Reserve Calf Champion at the 2020 National Western Stock Show and has not slowed down since. His first calf crop has exceeded expectations across the country. A SHAMELESS calf was aside the reserve champion female at this summer's NAJRAE. He is poised to take his sire, CARD SHARK's place as one of the breeds premiere sires.

Consigned by KAW RED ANGUS



Lot 32



Lot 33

33 WKK-SRA PROFITMAKER 1485G

REG: 4481243 / DOB: 2/16/21 / TAT: 1485G / BREED: 98.4% AR 1.6% XX

WFL MERLIN 018A
WFL PROFITMAKER E7030
WFL PROSPECT

BIEBER BRAVE E573
BIEBER DURHEIM 485G
BIEBER DURHEIM 147B

LJC MERLIN T179
WFL COMMITMENT 042Y
LSF PROSPECT 2035Z
WFL HOBO 140Z

BIEBER SPARTACUS A193
BIEBER ELDORENE 246C
BIEBER H HUGHES W109
BIEBER DURHEIM 274Z



ACT BW	88 lbs.
ADJ WW	726 lbs.
ADJ YW	1291 lbs.

ProS	HB	GM	CED	BW	WW	YW	ADG	MILK	ME	HPG	CEM	STAY	MARB	YG	CW	REA	FAT
104	61	44	12	-2.0	75	118	.27	27	2	13	7	15	.46	.08	31	.29	.03
25%	33%	33%	.63%	46%	6%	10%	20%	30%	46%	15%	51%	60%	36%	61%	21%	17%	83%

This Profitmaker sons maternal grandsire is Bieber Brave which has proven to be a powerhouse bull with loads of performance. His DAM has 4 performance traits in the top 1% from WW, YW, ADG and CW. He not only looks good on paper but has the look of a herd bull!



Lot 34

34 SRA RAGNAR 0349

REG: 4457263 / DOB: 3/6/21 / TAT: 1349 / BREED: 100% AR

PIE CODE RED 9058
KAW RAGNAR 527
KAW M26P BECTORIA 963

OLC YOD CHATO S230
YCRA DUCHESS A44
YCRA DUCHESS G2

VGW GAME PLAN 508
PIE STORMY 541
RED FINE LINE MULBERRY 26P
JAG LANA 516R

OLC ELINE CHATO P25
OLC MIMI M295
YCRA KING ROB
PSR DUCHESS 8272



ACT BW	89 lbs.
ADJ WW	611 lbs.
ADJ YW	1234 lbs.

ProS	HB	GM	CED	BW	WW	YW	ADG	MILK	ME	HPG	CEM	STAY	MARB	YG	CW	REA	FAT
85	64	21	9	0.5	54	86	.20	26	4	11	8	17	.29	.01	14	.03	.00
56%	27%	82%	.89%	88%	73%	71%	66%	37%	55%	45%	33%	26%	80%	21%	82%	17%	12%

Here's another great Ragnar son that has the look of a real cattleman's bull. He's long, deep, wide across his hip and has the athleticism to cover a lot of cows!



Lot 35

35 SRA NEW DIRECTION 1211

REG: 4457251 / DOB: 2/17/21 / TAT: 1211 / BREED: 100% AR

ANDRAS NEW DIRECTION R240
AJS NEW DIRECTION ELITE
JAG LANA 815U

MESSMER PACKER S008
HLH MS PACKER 4207 2111
HLH ABBIE 724 4207

ANDRAS IN FOCUS B152
ANDRAS KURUBA B111
BASIN CHEROKEE 2926
JAG LANA 613S

MESSMER JOSHUA 019P
MESSMER MILLIE 124P
LCC ABOVE & BEYOND 1300J
HLH LIGHTN LASS 312 724



ACT BW	82 lbs.
ADJ WW	612 lbs.
ADJ YW	1201 lbs.

ProS	HB	GM	CED	BW	WW	YW	ADG	MILK	ME	HPG	CEM	STAY	MARB	YG	CW	REA	FAT
110	73	37	15	-4.1	54	86	.20	24	4	13	9	18	.37	.08	24	.18	.03
18%	14%	48%	.23%	13%	72%	71%	69%	60%	55%	20%	18%	19%	60%	59%	44%	37%	76%

Where has this bull been! This bull is heavily muscled all the way throughout. He is top 20% in six major EPD categories. He is a great candidate for your next heifer bull with his grand sire going back to Andras New direction.



Lot 36

36 SRA CODE RED 1612

REG: 4553511 / DOB: 1/2/21 / TAT: 1612 / BREED: 100% AR

PIE CODE RED 9058
KAW RAGNAR 527
KAW M26P BECTORIA 963

TBS CANYON WAY 4403
TBS DAKOTA 6129
TBS MS DAKOTA SAKIC 237

VGW GAME PLAN 508
PIE STORMY 541
RED FINE LINE MULBERRY 26P
JAG LANA 516R

LAZYJ COWBOY WAY 1204-N460
TBS MONA CANYON 116
RED SIX MILE SAKIC 832S
TBS MS DAKOTA NATIVE 039



ACT BW	88 lbs.
ADJ WW	-
ADJ YW	-

ProS	HB	GM	CED	BW	WW	YW	ADG	MILK	ME	HPG	CEM	STAY	MARB	YG	CW	REA	FAT
82	64	19	11	-0.8	58	94	.23	26	5	13	8	16	.23	.03	19	.00	.00
61%	28%	86%	.75%	69%	58%	54%	49%	41%	60%	23%	35%	36%	92%	33%	65%	77%	11%

Here's a cowboy kind of bull. 1612 is long bodied, deep from hooks to pins and looks good on the move. He has solid EPDs across the board with top 26% in HB, he'll make some nice replacements.

37 SRA DOMAIN 1856

REG: 4457369 / DOB: 1/12/21 / TAT: 1856 / BREED: 100% AR

BECKTON DOMINOR T122 Z1
3SCC DOMAIN A163
3SCC EUCLA X723

BECKTON DOMINOR Z1 R610
BKT LARKABEL R038 WA
BASIN HOBO 0545
BSKF EUCLA U278

GGP
CE ★

BROWN JYJ REDEMPTION Y1334
SRA REDEMPTION 856
POKE MS SHINE 9197 4116

BECKTON NEBULA P P707
JYJ MS JOLENE W16
RED CROWFOOT MOONSHINE 8081U
HLH LADY LANCE 6068 9197

ACT BW 79 lbs.
ADJ WW 588 lbs.
ADJ YW 1102 lbs.

ProS	HB	GM	CED	BW	WW	YW	ADG	MILK	ME	HPG	CEM	STAY	MARB	YG	CW	REA	FAT
100	58	42	14	-3.0	56	94	.24	20	3	13	4	19	.55	.14	21	.00	.04
31%	38%	36%	34%	27%	64%	54%	42%	88%	52%	21%	95%	11%	20%	88%	55%	77%	85%

Another Domain son and heifer bull that is heavy boned, soggy through his middle and solid numbers from top to bottom. You will be sure to find this bull in the pens!



Lot 37

38 GWR REDEMPTION 105

REG: 4481203 / DOB: 3/1/21 / TAT: 105 / BREED: 100% AR

BECKTON NEBULA P P707
BROWN JYJ REDEMPTION Y1334
JYJ MS JOLENE W16

BECKTON NEBULA M045
BECKTON LANA M809 EP
LJC MISSION STATEMENT P27
HXC JOLENE R548

CE ★

JAG CHEROKEE 028X
GWR ROBIN 511
GWR ROBIN 307

SCHULER BASIN CHEROKEE 7318T
JAG ROSE 806U
GWR GP MR. RIGHT 013
GWR ROBIN 125

ACT BW 74 lbs.
ADJ WW 643 lbs.
ADJ YW -

ProS	HB	GM	CED	BW	WW	YW	ADG	MILK	ME	HPG	CEM	STAY	MARB	YG	CW	REA	FAT
108	64	44	14	-3.2	62	101	.24	28	4	12	7	17	.52	.11	26	-.02	.01
21%	27%	33%	34%	24%	42%	39%	36%	24%	55%	34%	46%	28%	25%	78%	34%	81%	39%

GWR REDEMPTION 105 is very well balanced with all the best moving parts. As a calf he was the real "eye catcher" on summer pasture. His dam GWR ROBIN 511 is a former show heifer with many accolades, exceptional structure, function and easy fleshing. The GWR Red Angus commitment to calving ease is real and this bull is as well with CED 14 and BWT -3.2 while maintaining growth ranked in the top 40% of the breed. Recommended for heifers and cows.



Lot 38

Consigned by GWR RED ANGUS

39 SRA NEW DIRECTION 7309

REG: 4457355 / DOB: 2/21/21 / TAT: 1309 / BREED: 100% AR

ANDRAS NEW DIRECTION R240
AJS NEW DIRECTION ELITE
JAG LANA 815U

ANDRAS IN FOCUS B152
ANDRAS KURUBA B111
BASIN CHEROKEE 2926
JAG LANA 613S

GGP
CE ★

BROWN JYJ REDEMPTION Y1334
AJS 7309 SRA REDEMP
JAG LANA 815U

BECKTON NEBULA P P707
JYJ MS JOLENE W16
BASIN CHEROKEE 2926
JAG LANA 613S

ACT BW 82 lbs.
ADJ WW 669 lbs.
ADJ YW 1152 lbs.

ProS	HB	GM	CED	BW	WW	YW	ADG	MILK	ME	HPG	CEM	STAY	MARB	YG	CW	REA	FAT
93	56	38	15	-4.1	59	94	.22	27	5	12	7	17	.40	.03	27	.19	.00
42%	43%	47%	15%	13%	53%	55%	58%	34%	64%	32%	54%	33%	51%	28%	34%	34%	23%

A heifer bull that will let you sleep all night with a 15 CED and -4.1 on BW. This New Direction son is backed with a solid pedigree with Redemption on the dam's side, his growth from birth to weaning is outstanding and carcass values are all in the top 30%.

40 WKK-SRA KIRKLAND 1343G

REG: 4481245 / DOB: 3/5/21 / TAT: 1343G / BREED: 100% AR

HXC 5545C
KJL/CLZB KIRKLAND 8003F
HXC 107Y

LEACHMAN PLEDGE A282Z
HXC 811U
BECKTON NEBULA P P707
HXC 903W

GGP
CE ★

MLK CRK UNIFIED 4207
BIEBER GALEE 343G
BIEBER GALEE 558D

ANDRAS FUSION R236
MLK CRK LAKOTA 953
BIEBER H HUGHES W109
BIEBER GALEE 291X

ACT BW 77 lbs.
ADJ WW 653 lbs.
ADJ YW 1159 lbs.

ProS	HB	GM	CED	BW	WW	YW	ADG	MILK	ME	HPG	CEM	STAY	MARB	YG	CW	REA	FAT
82	33	49	9	-0.7	61	98	.23	26	5	13	6	12	.59	.00	17	.21	.01
62%	86%	23%	89%	71%	45%	45%	45%	42%	63%	20%	70%	85%	14%	17%	71%	30%	35%

This Kirkland son is out of a first calf heifer and has the look of a cattleman's bull. He is heavy muscled, big boned and will breed some natural thickness in your feeder calves.

41 SRA RAGNAR 1654

REG: 4457335 / DOB: 3/16/21 / TAT: 1654 / BREED: 100% AR

PIE CODE RED 9058
KAW RAGNAR 527
KAW M26P BECTORIA 963

VGW GAME PLAN 508
PIE STORMY 541
RED FINE LINE MULBERRY 26P
JAG LANA 516R

GGP
CE ★

ANDRAS NEW DIRECTION R240
TBS NEW HOBI 654
TBS MS HOBO CANYON 409

ANDRAS IN FOCUS B152
ANDRAS KURUBA B111
FORSTER HOBO X001
TBS MS CANYON 62

ACT BW 68 lbs.
ADJ WW 557 lbs.
ADJ YW 1077 lbs.

ProS	HB	GM	CED	BW	WW	YW	ADG	MILK	ME	HPG	CEM	STAY	MARB	YG	CW	REA	FAT
93	61	32	15	-3.9	49	83	.21	23	4	14	10	15	.36	.08	21	-.04	.01
42%	32%	61%	17%	15%	84%	76%	60%	70%	57%	12%	9%	52%	61%	62%	56%	85%	26%

Another heifer bull that is smooth fronted and very athletic. He's an eye catcher and will make some really nice replacement heifers.



Lot 41



42 SRA RAGNAR 1551

REG: 4457291 / DOB: 1/23/21 / TAT: 1551 / BREED: 100% AR

PIE CODE RED 9058
KAW RAGNAR 527
 KAW M26P BECTORIA 963

LMG GILLS INDEED 1603
LMG MISS TINA 55199
 LUCHT TINA 996

VGW GAME PLAN 508
 PIE STORMY 541
 RED FINE LINE MULBERRY 26P
 JAG LANA 516R

RED TOWAW INDEED 104H
 LMG DYNETTE 3041
 LUCHT ROMEO R052
 C-T TINA 402



ACT BW	89 lbs.
ADJ WW	687 lbs.
ADJ YW	1144 lbs.

ProS	HB	GM	CED	BW	WW	YW	ADG	MILK	ME	HPG	CEM	STAY	MARB	YG	CW	REA	FAT
80	57	23	11	-1.8	52	83	.19	26	3	11	7	16	.31	.04	16	-.05	.00
65%	42%	78%	.77%	49%	78%	77%	72%	43%	52%	47%	39%	41%	75%	34%	76%	86%	10%

This Ragnar son has been consistent all year and in the top of his class for natural weaning weight. If your looking for pounds at weaning here's a bull you might want to highlight.



Lot 43

43 SRA DEEP DOMAIN 1510

REG: 4457281 / DOB: 1/18/21 / TAT: 1510 / BREED: 100% AR

BECKTON DOMINOR T122 Z1
3SCC DOMAIN A163
 3SCC EUCLA X723

231 PIE
RRA MISS EXCEL 188 5102
 RRA MISS EXCEL 409 188

BECKTON DOMINOR Z1 R610
 BKT LARKABEL R038 WA
 BASIN HOBO 0545
 BSKF EUCLA U278

RED LAZY MC REDMAN 20X
 PIE STORMY 0244
 RRA LAMONI 716
 RRA MISS EXCEL 409



ACT BW	83 lbs.
ADJ WW	638 lbs.
ADJ YW	1172 lbs.

ProS	HB	GM	CED	BW	WW	YW	ADG	MILK	ME	HPG	CEM	STAY	MARB	YG	CW	REA	FAT
113	74	39	13	-2.2	46	81	.22	24	-2	12	5	19	.38	.14	18	-.03	.04
15%	12%	44%	.46%	42%	89%	79%	55%	64%	25%	24%	83%	6%	56%	86%	68%	71%	92%

A real beef bull that is thick across his top, soggy middled and heavy boned, he'll travel and be able to breed a lot of cows. This Domain son like many will produce some great replacements with top 10% in HB and 14% in ProS.



Lot 44

44 SRA ROLLIN DEEP 0814

REG: 4457367 / DOB: 2/27/21 / TAT: 1814 / BREED: 100% AR

BIEBER ROLLIN DEEP Y118
SRN ALISTAR 1635
 MESSMER LINDA T112

RRA LOGISTICS 227
RRA RUBY 8002 8144
 LACY RUBY 8002

BIEBER ROOSEVELT W384
 BIEBER TILLY 399W
 BECKTON LANCER F442 T
 MESSMER LINDA 2322

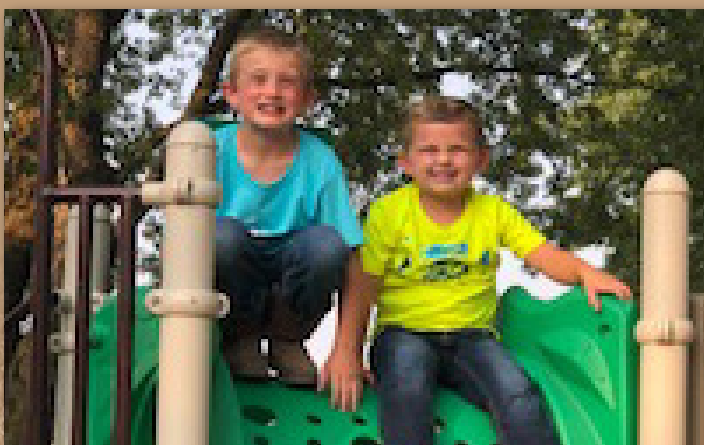
HXC CONQUEST 4405P
 RRA RACHEL 246 746
 5L SIGNATURE 5615
 LACY LARKISA 122M



ACT BW	89 lbs.
ADJ WW	687 lbs.
ADJ YW	1225 lbs.

ProS	HB	GM	CED	BW	WW	YW	ADG	MILK	ME	HPG	CEM	STAY	MARB	YG	CW	REA	FAT
55	31	24	12	-0.2	67	106	.24	31	5	9	7	12	.30	-.02	19	.29	.01
94%	88%	78%	.63%	80%	25%	29%	36%	8%	61%	80%	51%	83%	79%	12%	64%	17%	36%

A moderate framed, dark red Alistar son and Rollin Deep grand sire that has some really good growth numbers from birth to yearling. With a top 25-30% in WW, YW and ADG this bull will make some great feeder calves!



45 SRA REDEMPTION 1613

REG: 4457321 / DOB: 1/13/21 / TAT: 1613 / BREED: 100% AR

BECKTON NEBULA P P707
BROWN JYI REDEMPTION Y1334
 JYI MS JOLENE W16

BHR BASES LOADED 389
TBS MAIN BASE 613
 TBS MS MAINSTREAM 064

BECKTON NEBULA M045
 BECKTON LANA M809 EP
 LJC MISSION STATEMENT P27
 HXC JOLENE R548

VGW BASES LOADED 166
 MISS BHR CHAPTER ONE 743
 CBR MAINSTREAM 957-3020
 TBS MS CANYON 660



ACT BW	88 lbs.
ADJ WW	673 lbs.
ADJ YW	1051 lbs.

ProS	HB	GM	CED	BW	WW	YW	ADG	MILK	ME	HPG	CEM	STAY	MARB	YG	CW	REA	FAT
116	75	42	11	-1.1	62	102	.25	25	7	13	6	20	.50	.09	25	.01	.01
12%	12%	38%	.71%	64%	42%	36%	31%	50%	76%	20%	75%	5%	28%	62%	39%	75%	29%

1613 is out of the popular Redemption Sire that has a little flash with his natural muscling, depth of rib and the numbers to go with it. This bull could have easily been towards the top end of the lineup!

46 SRA MAKING HAY 1409

REG: 4457277 / DOB: 2/17/21 / TAT: 1409 / BREED: 100% AR

BIEBER MAKE MIMI 7249
BIEBER MAKIN HAY 9913
 BIEBER ADELLE 8958

WEBR TC CARD SHARK 1015
KLEIN DUSTY 052-409B
 RED CORNER CREEK DUSTY 052

BJR MAKE MY DAY 981
 BIEBER SIRENA 6708
 BIEBER TITAN 6894
 BIEBER ADELLE 7226

WEBR DOC HOLIDAY 2N
 PFFR MS NYACK 237
 RED CORNER CREEK DESTINED 73
 CORNER CREEK MS QUICK 855



ACT BW	77 lbs.
ADJ WW	571 lbs.
ADJ YW	1100 lbs.



Lot 46

ProS	HB	GM	CED	BW	VW	YW	ADG	MILK	ME	HPG	CEM	STAY	MARB	YG	CW	REA	FAT
86	61	25	13	-2.6	52	87	.22	26	6	8	11	17	.31	.06	22	.09	.01
54%	32%	75%	46%	33%	77%	70%	58%	46%	71%	95%	3%	25%	75%	45%	52%	58%	36%

Oh boy, here's a Bieber Makin Hay son with TC Card Shark on the dam's side, this bull has a lot of credentials! He's a heifer bull and doesn't sacrifice much on performance.

47 SRA RAGNAR 1540

REG: 4457303 / DOB: 4/2/21 / TAT: 1540 / BREED: 100% AR

PIE CODE RED 9058
KAW RAGNAR 527
 KAW M26P BECTORIA 963

BIEBER H HUGHES W109
KLEIN FAYE 2212-540C
 PIE FAYE 2212

VGW GAME PLAN 508
 PIE STORMY 541
 RED FINE LINE MULBERRY 26P
 JAG LANA 516R

BASIN HOB0 0545
 BASIN ROSE 0670
 PIE PRIME TIME 884
 PIE MS FAYE DUKE 509



ACT BW	92 lbs.
ADJ WW	708 lbs.
ADJ YW	1272 lbs.



Lot 47

ProS	HB	GM	CED	BW	VW	YW	ADG	MILK	ME	HPG	CEM	STAY	MARB	YG	CW	REA	FAT
108	86	22	10	-0.1	64	97	.21	27	3	13	9	19	.30	-.01	21	.22	.00
21%	4%	81%	80%	81%	35%	48%	64%	36%	49%	17%	18%	10%	79%	14%	55%	28%	18%

This Ragnar son is long, deep through his mid rib and in the top 4% of HB. He has all the tools to make nice replacements and great feeder calves.

48 SRA MALBEC 1556

REG: 4457295 / DOB: 1/25/21 / TAT: 1556 / BREED: 100% AR

RED U-2 RECKONING 149A
RED U2 MALBEC 195D
 RED U-2 MABEL 60A

LMG GILLS INDEED 1603
LMG MISS ROCKER 5668
 LMG MISS ROCKER 0006

RED U-2 RECON 192Y
 RED U-2 ANEXA 271Y
 RED MINBURN COPENHAGEN 3Y
 RED U-2 MABEL 7061T

RED TOWAW INDEED 104H
 LMG DYNETTE 3041
 BIEBER MAKE MIMI 7249
 CFRA ROCKER 6105-9820



ACT BW	82 lbs.
ADJ WW	566 lbs.
ADJ YW	1100 lbs.



Lot 48

ProS	HB	GM	CED	BW	VW	YW	ADG	MILK	ME	HPG	CEM	STAY	MARB	YG	CW	REA	FAT
77	58	19	12	-3.0	55	84	.18	21	-5	8	10	14	.33	.05	17	.08	.01
70%	40%	85%	52%	27%	69%	75%	79%	83%	18%	91%	5%	63%	70%	38%	72%	59%	41%

A heifer bull out of a sire from Canada RED U-2 Malbec, a nice outcross that gives you some consistent performance across the board.

49 SRA ROLLING DEEP 1315

REG: 4457257 / DOB: 3/3/21 / TAT: 1315 / BREED: 100% AR

BIEBER ROLLIN DEEP Y118
SRN ALISTAR 1635
 MESSMER LINDA T112

BUF CRK JUBILATION X019
HLH MS JUBILATION 6131 3155
 HLH TEE ARA 901 6131

BIEBER ROOSEVELT W384
 BIEBER TILLY 399W

BECKTON LANCER F442 T
 MESSMER LINDA 2322

RED HILL B571 JULIAN 84S
 BUF CRK TAWN U241
 SRR TRIPLE CROWN 400
 HLH DAISY 708 901



ACT BW	90 lbs.
ADJ WW	588 lbs.
ADJ YW	1176 lbs.

ProS	HB	GM	CED	BW	VW	YW	ADG	MILK	ME	HPG	CEM	STAY	MARB	YG	CW	REA	FAT
82	54	28	11	-0.4	65	105	.25	26	8	10	7	17	.31	-.02	21	.28	.01
62%	48%	69%	70%	76%	29%	31%	34%	39%	79%	74%	51%	32%	75%	11%	58%	18%	25%

A good lookin' Alistar son going back to Rollin Deep on the top side and Buf Crk Jubilation on the dam's side. He has just the right combination to make some great feeder calves that perform on the grid.

50 GWR 919 103

REG: 4481225 / DOB: 2/22/21 / TAT: 103 / BREED: 100% AR

GWR BROWN COMPLETE 701
GWR ROBIN 919
 GWR ROBIN 506

GWR BROWN COMPLETE 701
GWR ROBIN 910
 GWR ROBIN 307

BROWN COMPLETE B238
 GWR ROBIN 305
 ANDRAS NEW DIRECTION R240
 GWR ROBIN 305

BROWN COMPLETE B238
 GWR ROBIN 305
 GWR GP MR. RIGHT 013
 GWR ROBIN 125

ACT BW	64 lbs.
ADJ WW	659 lbs.
ADJ YW	-

ProS	HB	GM	CED	BW	VW	YW	ADG	MILK	ME	HPG	CEM	STAY	MARB	YG	CW	REA	FAT
74	47	27	14	-3.1	51	79	.17	26	4	11	7	15	.54	.15	15	-.08	.04
74%	61%	70%	27%	25%	79%	82%	83%	45%	57%	50%	46%	52%	21%	90%	78%	89%	89%

GWR 919 103 is a deep ribbed, big sided, big boned, double bred BROWN COMPLETE herdsire. His dam, just a heifer, GWR 910 did a great job raising this calf and will be one of GWR's top producers in the future. This bull's sire GWR 919 was the herds pick from the 2019 calf crop and breeds calving ease into everything. Recommended for heifers and cows.

Consigned by GWR RED ANGUS



51 SRA ROLLING DEEP 1866

REG: 4470761 / DOB: 2/8/21 / TAT: 1866 / BREED: 100% AR

BIEBER ROLLIN DEEP Y118
SRN ALISTAR 1635
 MESSMER LINDA T112

FEDDES SHOOTER A76-D243
SRA REDEMPTION 8667
 TBS SENSATION 667

BIEBER ROOSEVELT W384
 BIEBER TILLY 399W
 BECKTON LANCER F442 T
 MESSMER LINDA 2322
 PIE SHOOTER 8012
 FEDDES LAKINA 453 A76
 PRESSER'S COVENANT 4037
 TBS MS CO SENSATION 799



ACT BW	94 lbs.
ADJ WW	710 lbs.
ADJ YW	1231 lbs.

ProS	HB	GM	CED	BW	WW	YW	ADG	MILK	ME	HPG	CEM	STAY	MARB	YG	CW	REA	FAT
87	52	36	10	0.5	61	103	.26	27	7	9	6	17	.35	-.01	20	.26	.01
52%	52%	52%	.86%	88%	45%	35%	24%	36%	74%	82%	64%	29%	64%	16%	60%	21%	35%

A powerhouse bull with a lot of growth from birth to weaning. Another Alistar son going back to Rollin Deep, this bull will add some pounds to your calves and will perform on the grid.



Lot 52

52 KAW RACH 2X RAGNAR 114

REG: 4477657 / DOB: 2/22/21 / TAT: 114 / BREED: 100% AR

PIE CODE RED 9058
KAW RAGNAR 527
 KAW M26P BECTORIA 963

KAW RAGNAR 527
KAW SALLY 842
 CARAS RACHEL 583

VGW GAME PLAN 508
 PIE STORMY 541
 RED FINE LINE MULBERRY 26P
 JAG LANA 516R
 PIE CODE RED 9058
 KAW M26P BECTORIA 963
 LIMESTONE DARKHORSE U322
 WERNER MILL IRON RACHEL 7300

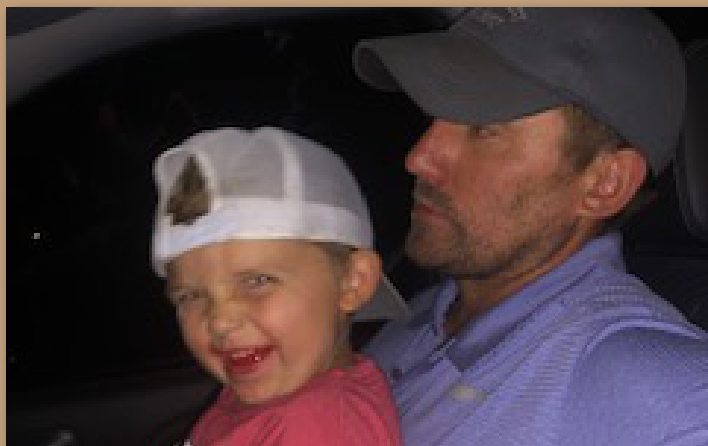


ACT BW	67 lbs.
ADJ WW	707 lbs.
ADJ YW	-

ProS	HB	GM	CED	BW	WW	YW	ADG	MILK	ME	HPG	CEM	STAY	MARB	YG	CW	REA	FAT
120	63	57	14	-2.4	64	109	.28	24	1	13	8	15	.55	.10	29	.03	.01
10%	29%	12%	.34%	38%	35%	22%	12%	60%	39%	20%	26%	54%	20%	71%	25%	71%	33%

KAW RACH 2X RAGNAR 114 is a double bred RAGNAR is out of our top black red carrier female KAW SALLY 842. Like all RAGNAR sired bulls he is powerfully muscled, structurally correct and puts it all together in a sleek, smooth package. Graceful on the move this young sire will cover a lot of ground this spring in your pasture. The durability of the of the RAGNAR line has been exceptional as all 5 of his flushmates are about to enter their 7th breeding season. Recommended for heifers and cows.

Consigned by KAW RED ANGUS



53 SRA RAGNAR RILEY 063

REG: 4526625 / DOB: 3/21/21 / TAT: 163 / BREED: 100% AR

PIE CODE RED 9058
KAW RAGNAR 527
 KAW M26P BECTORIA 963

BIEBER FEDERALIST B543
TBS FEDERAL DAKOTA 63
 TBS MS RED DAKOTA 417

VGW GAME PLAN 508
 PIE STORMY 541
 RED FINE LINE MULBERRY 26P
 JAG LANA 516R
 ANDRAS FUSION R236
 BASIN PRIMROSE 0T43
 BHR CODE RED 2143
 TBS MS DAKOTA CHESTER 190



ACT BW	84 lbs.
ADJ WW	561 lbs.
ADJ YW	-

ProS	HB	GM	CED	BW	WW	YW	ADG	MILK	ME	HPG	CEM	STAY	MARB	YG	CW	REA	FAT
101	70	31	10	0.6	60	93	.21	29	3	12	7	18	.43	.07	19	-.08	.00
29%	17%	63%	.84%	89%	51%	56%	61%	17%	51%	36%	43%	20%	43%	51%	65%	89%	15%

This Ragnar son's dam is out of Bieber Federalist which has been a popular sire for years. This bull has solid numbers from top to bottom and has a top 17% in HB and 29% in ProS. A really solid bull all around!



Lot 54

54 SRA PTO 1557

REG: 4457297 / DOB: 2/17/21 / TAT: 1557 / BREED: 100% AR

RED SOO LINE POWER EYE 161X
KJHT POWER TAKE OFF
 SRA PAINTBUCKET

LMG GILLS INDEED 1603
LMG MISS MTX 5574
 LMG MISS MTX 1364

RED COCKBURN RIBEYE 308U
 RED TR LYNN 301R
 RED NORTHLINE FAT TONY 605U
 SRA PICABO PROMISE
 RED TOWAW INDEED 104H
 LMG DYNETTE 304I
 LMG GILLS BULL DAWG 8507-743
 LMG MTX 062



ACT BW	93 lbs.
ADJ WW	635 lbs.
ADJ YW	1141 lbs.

ProS	HB	GM	CED	BW	WW	YW	ADG	MILK	ME	HPG	CEM	STAY	MARB	YG	CW	REA	FAT
77	66	10	11	0.6	60	95	.21	27	2	10	8	18	.15	.08	21	.02	.01
71%	23%	95%	.67%	89%	48%	53%	58%	35%	46%	72%	37%	21%	97%	57%	57%	73%	36%

One of the only PTO sons in the lineup, 1557 has the look, stride and athleticism to cover a lot of cows. Out of a really good Gills Red Angus cow family this bull is most certainly not one to overlook.

55 SRA ROLLING DEEP 1140

REG: 4457275 / DOB: 2/16/21 / TAT: 1140 / BREED: 100% AR

SRN ALISTAR 1635
BIEBER ROLLIN DEEP Y118
MESSMER LINDA T112

RBH VERDALE 1407
FEDDES OSCAR 1119
RBH VERDI 808

BIEBER ROOSEVELT W384
BIEBER TILLY 399W

BECKTON LANCER F442 T
MESSMER LINDA 2322

RED CROWFOOT OLE'S OSCAR
RBH LAKINA 601S

FEDDES VERMILLION R13
CTDB VERDI 236

GGP

ACT BW 80 lbs.
ADJ WW 700 lbs.
ADJ YW 1204 lbs.

ProS	HB	GM	CED	BW	VW	YW	ADG	MILK	ME	HPG	CEM	STAY	MARB	YG	CW	REA	FAT
75	49	26	11	-0.5	61	101	.25	29	7	8	7	17	.34	.00	17	.21	.01
74%	58%	72%	.72%	75%	44%	39%	34%	17%	73%	93%	58%	33%	67%	18%	70%	30%	36%

A bull that is backed by the great Feddes Oscar that is in the top 30-40% in WW, YW and ADG he'll make a nice set of feeder calves.

57 SRA LIBERTY 1914

REG: 4457387 / DOB: 3/5/21 / TAT: 1914 / BREED: 75% AR 25% XX

ANDRAS LIBERTY F176
FEDDES LIBERTY D210
ANDRAS CHEY BRILLIANCE D117

SRA COMPLETE KIRA 9145
BROWN COMPLETE B238

5L INDEPENDENCE 560-298Y
FEDDES SLEEK 806

ANDRAS BRILLIANCE B002
ANDRAS CHEYENNE 1139

LSF TAKEOVER 9943W
BROWN MS P707 X7580

GGP

CE

ACT BW 80 lbs.
ADJ WW 691 lbs.
ADJ YW 1155 lbs.

ProS	HB	GM	CED	BW	VW	YW	ADG	MILK	ME	HPG	CEM	STAY	MARB	YG	CW	REA	FAT
84	39	45	14	-2.7	57	85	.18	27	-7	11	6	12	.72	.13	15	-.04	.04
58%	76%	30%	.28%	32%	62%	73%	80%	36%	14%	50%	68%	85%	4%	86%	78%	85%	88%

1914 is an Andras Liberty son backed by Brown Complete. On the dam's side he has built in calving ease at a -2.7. A great option for heifers or moderate framed cows.

58 GWR 919 109

REG: 4481209 / DOB: 3/4/21 / TAT: 109 / BREED: 100% AR

GWR ROBIN 919
GWR BROWN COMPLETE 701
GWR ROBIN 506

GWR RUBIE 708
RED LAZY MC CC DETOUR 2W
KAW CHY'S RUBIE

BROWN COMPLETE B238
GWR ROBIN 305

ANDRAS NEW DIRECTION R240
GWR ROBIN 305

RED RMJ REDMAN 1T
RED LAZY MC BESS 12S

BECKTON LANCER F442 T
JAG SHASTA LADY 408P

CE

ACT BW 74 lbs.
ADJ WW 729 lbs.
ADJ YW -

ProS	HB	GM	CED	BW	VW	YW	ADG	MILK	ME	HPG	CEM	STAY	MARB	YG	CW	REA	FAT
63	47	16	14	-2.2	59	91	.20	25	2	8	8	15	.35	.09	16	.08	.04
88%	62%	89%	.33%	42%	53%	61%	69%	49%	44%	95%	26%	54%	64%	68%	75%	59%	85%

GWR 109 is another calving ease bull sired by GWR 919. With CED of 14 and a BWT of -2.2 he is made for heifers. This bull's strong frame and undercarriage is as good as it gets. His dams sire is MC DETOUR that puts growth and muscle into the package. Recommended for heifers and cows.

Consigned by GWR RED ANGUS

59 GWR 919 113

REG: 4481211 / DOB: 3/18/21 / TAT: 113 / BREED: 100% AR

GWR ROBIN 919
GWR BROWN COMPLETE 701
GWR ROBIN 506

GWR LANA 712
JAG DESIGN 331A
JAG RUBY 120Y

BROWN COMPLETE B238
GWR ROBIN 305

ANDRAS NEW DIRECTION R240
GWR ROBIN 305

JAG DESIGN 108Y
JAG LANA 815U

5L DOUBLE DESIGN 1177-227W
JAG LANA 611S

CE

ACT BW 74 lbs.
ADJ WW 650 lbs.
ADJ YW -

ProS	HB	GM	CED	BW	VW	YW	ADG	MILK	ME	HPG	CEM	STAY	MARB	YG	CW	REA	FAT
78	60	18	14	-2.3	58	87	.18	24	3	10	6	18	.33	.05	17	.08	.02
69%	35%	87%	.36%	40%	58%	69%	78%	57%	48%	61%	68%	20%	70%	44%	73%	59%	52%

GWR 919 113 is a base wide strong moving big topped herdsire with depth of rib and muscle. His dam GWR LANA 712 is a great young cow sired by JAG 331 a favorite herdsire at GWR Red Angus. This bull's sire was the herds pick from the 2019 calf crop and breeds calving ease into everything. Recommended for heifers and cows.

Consigned by GWR RED ANGUS

56 ECCRA HENRY GOLDEN BOY 204

REG: 4289283 / DOB: 5/24/2020 / TAT: 204 / BREED: 100% AR

SIX MILE TAURUS 519A
SIX MILE GAME FACE 164Y
RED SIX MILE SHAWNEE 116T

RED SIX MILE ALANA 300B
RED SIX MILE RUGER 221X
RED U6 ALANA 13X

VGW GAME PLAN 816
RED SIX MILE LAKOTO 35W

5L NORSEMAN KING 2291
RED CROWFOOT SHAWNEE 9124J

RED SIX MILE ULTIMATUM 409U
RED SIX MILE SHAWNEE 116T

BLACK WHEEL ODYSSEY 117U
RED U6 ALANA 65T

ACT BW 92 lbs.
ADJ WW -
ADJ YW -

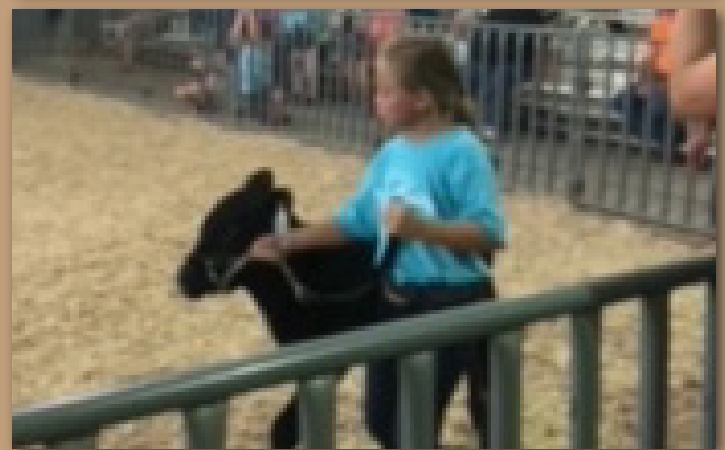
ProS	HB	GM	CED	BW	VW	YW	ADG	MILK	ME	HPG	CEM	STAY	MARB	YG	CW	REA	FAT
37	28	10	11	0.4	54	80	.16	24	0	10	4	13	.26	-.06	9	.16	.00
99%	91%	95%	.73%	87%	72%	81%	87%	57%	35%	63%	94%	77%	87%	5%	91%	40%	9%

TWO YEAR OLD BULL. ECCRA HENRY GOLDEN BOY 204 ET is a late born 2020 ET calf sired by SIX MILE TAURUS 519A. This bulls dam ALANA 300B was sold for \$30,000 (CA) as the high seller in Six Mile's 2015 sale and has been a producer of many tremendous performance offspring in Canada. Henry's sire TAURUS is a two time National Western Champion Bull. Super disposition. Trich tested Negative. Recommended for cows acceptable for heifers - we used him on cows.

Consigned by KAW RED ANGUS



Lot 57



Lot 59

SIMMENTAL



Sire of Lot 60

60 W-C MR ORACLE J159

REG: 4012576 / DOB: 3/21/21 / TAT: J159 / BREED: PB Simmental

LLSF UPRISING Z925
HILB ORACLE C033R
 SS BABYS BREATH P035

WS PILGRIM H182U
HCCO COUNTESS 159C
 SJF COUNTESS 159Y

HEADS UP 20X ET
 LLSF UNTOUCHABLE U925
 SS GOLDMINE L42
 SVF BREATH TAKER J130
 CNS DREAM ON L186
 WS MARLA 276M
 WAGR DRIVER 706T
 W9

ACT BW 81 lbs.
 ADJ WW 714 lbs.
 ADJ YW 1055 lbs.

CE	BW	WW	YW	ADG	MCE	Milk	MWW	Stay	Doc	CW	YG	Marb	BF	REA	API	TI
10.4	1.4	67.3	93.5	.16	4.3	21.6	57.8	11	14	15.1	-.47	.10	-.106	.74	115.6	70.7
60%	45%	90%	95%	99%	80%	70%	75%	95%	20%	95%	25%	55%	20%	85%	85%	85%

Only baldy on the sale, don't hold his age against him. He'll add some extra softness to his calves with some rib expansion. Just imagine your next calf crop that has some baldy replacements that carries this guy's eye appeal, and a set of high performing bull calves.

Consigned by WOERNER CATTLE CO

61 W-C MR HIGH COTTON J6103

REG: 4012575 / DOB: <2/12/21 / TAT: J6103 / BREED: PB Simmental

W/C EXECUTIVE 187D
W-C HIGH COTTON 922
 W-C COTTONTAIL E922

W/C BULLSEYE 3046A
W-C MS SCARLET F6103
 JSD NATALIE 6103D

W/C UNITED 956Y
 MISS WERNING KP 8543U
 WS REVIVAL
 SS/PRS COTTONTAIL 1166Z
 REMINGTON LOCK N LOAD54U
 MISS WERNING KP 8543U
 MR HOC BROKER
 JSD NATALIE 6103D

CE ★
 ACT BW 77 lbs.
 ADJ WW 748 lbs.
 ADJ YW 1270 lbs.

CE	BW	WW	YW	ADG	MCE	Milk	MWW	Stay	Doc	CW	YG	Marb	BF	REA	API	TI
12.9	-0.1	69	104.5	.22	5.5	19.8	53.9	11.2	10.1	24.9	-.38	.02	-.080	.79	119.3	71.8
25%	20%	85%	75%	70%	55%	80%	90%	95%	70%	95%	75%	75%	75%	75%	80%	80%

Spread bull. Negative BW and over 100 YW, this guy will be the easy doing kind. Good EPDs, but also has the look to match the numbers and the structure to keep him employed for a long time. W-C bred on both sides. Heifer candidate.

Consigned by WOERNER CATTLE CO

62 W-C MR RELENTLESS J922

REG: 4012574 / DOB: 2/2/21 / TAT: J922 / BREED: PB Simmental

YARDLEY UTAH Y361
W-C RELENTLESS 32C
 MISS WERNING KP 8543U

WS REVIVAL
W-C COTTONTAIL E922
 SS/PRS COTTONTAIL 1166Z

GCC HARD AS STEEL 144W
 MISS YARDLEY T170
 WAGR DREAM CATCHER 03R
 MISS WERNING 534R
 LLSF UPRISING Z925
 SS NOREEN
 CNS PAYS TO DREAM T759
 KENCO MILEY COTTONTAIL

★
 ACT BW 88 lbs.
 ADJ WW 823 lbs.
 ADJ YW 1314 lbs.

CE	BW	WW	YW	ADG	MCE	Milk	MWW	Stay	Doc	CW	YG	Marb	BF	REA	API	TI
9.5	3.3	78.2	105.4	.17	3.5	18.6	56.5	10.3	11.4	15.8	-.47	.12	-.089	.87	113.8	74.6
70%	85%	50%	75%	95%	90%	90%	80%	99%	55%	95%	25%	50%	55%	55%	85%	65%

Long spined and chiseled neck and should add a touch of frame. Out of one of our top cows with a proven Cottontail pedigree, you could keep every female he produces. Will work great on older, Angus influenced cows to give calves a shot of crossbred, hybrid vigor.

Consigned by WOERNER CATTLE CO

63 W-C MR EPIC J255

REG: 4012573 / DOB: 1/28/21 / TAT: J253 / BREED: PB Simmental

WS ALL-AROUND Z35
OMF EPIC E27
 OMF TIME LESS B100

WS REVIVAL
W-C GEMSTONE 225G
 HS SWEET GEM X141N

WS BEEF KING W107
 CDI MS HIGH ROLLER 39W
 OMF COMMANDER Y69
 OMF TIMELESS Z21
 LLSF UPRISING Z925
 SS NOREEN
 HTP/SVF DURACELL T52
 KENCO MILEY COTTONTAIL

CE ★
 ACT BW 79 lbs.
 ADJ WW 835 lbs.
 ADJ YW 1344 lbs.

CE	BW	WW	YW	ADG	MCE	Milk	MWW	Stay	Doc	CW	YG	Marb	BF	REA	API	TI
11.2	0.9	87	129.5	.27	6.3	16.6	58.7	13.4	13.9	29.2	-.39	.09	-.086	.81	130.1	82.5
45%	35%	20%	25%	30%	40%	95%	70%	85%	20%	50%	70%	60%	55%	70%	50%	30%

Another spread bull and heifer candidate. Study his moderate phenotype in a powerful package. He has the look to match the numbers from the ground up. Great feet, big hipped, wide topped, this guy will put some look into replacement heifers and bull calves alike.. Out of a proven cow family.

Consigned by WOERNER CATTLE CO



Lot 61



Lot 62



Sire of Lot 63

64 SRA ALL ABOARD 1606

REG: 4457305 / DOB: 2/4/21 / TAT: 1606 / BREED: 100% AR

RED SSS HIGHLINE 120U
RED ALALTA ACRES HI LINE 34X
 RED ALALTA ACRES DAWN 3M

R SSS HIGH LINE 402M
 RED SEAMAN SCYNTHIA 15N
 RED MAC DON STEVE 28J
 WHTS LAKME 517



JAG DESIGN 331A
GWR LANA 606
 JAG RUBY 110Y

JAG DESIGN 108Y
 JAG LANA 815U
 5L DOUBLE DESIGN 1177-227W
 JAG LANA 521R

ACT BW	93 lbs.
ADJ WW	726 lbs.
ADJ YW	1342 lbs.



ProS	HB	GM	CED	BW	VW	YW	ADG	MILK	ME	HPG	CEM	STAY	MARB	YG	CW	REA	FAT
96	87	9	13	-1.2	58	78	.13	24	-10	10	6	20	.11	-.06	16	.23	-.01
37%	4%	96%	.40%	62%	59%	83%	94%	58%	11%	75%	68%	4%	99%	5%	76%	26%	7%

Here's a All Aboard son that looks the part and has 6 traits in the top 5-10% of the herd average. He has one of the heaviest weaning/yearling weights and will put pounds on your calves at weaning.

65 COMMERCIAL BULL

Rolling Deep Herd Bull

BAR DOUBLE M CHIEF 97N
QUEEN 128R
 QUEEN 417F

DFRA LANA 113
 CRESCENT CREEK CHIEF 43J
 BAR DOUBLE M JANE 4H
 KING 27D
 QUEEN 167D



ACT BW	76 lbs.
ADJ WW	584 lbs.
ADJ YW	-

Our only commercial bull on the sale that will for sure do the job. He is out off our Rolling Deep herd bull. As you can see from his physical appearance and up and down movement he is a bull that will add pounds at weaning just like his grandsire.



Lot 49

SCHWEITZER RED ANGUS

Platinum Warranty Program

At SRA we will always back our product with a business conversation. After the last five years in the business, we have learned a lot. Every bull when sold at the time of our sale has:

- Passed a breeding soundness exam by Seward Animal Hospital
- Has been free of any health issues at sale time; or previous issue were stated on auction block at sale time
- Been given all proper vaccinations protocols up to sale time

Over the years we replace bulls during the first breeding season. Nearly all those replacements have been issues beyond our control. These issues include hardware, a bovine respiratory disease after bull was delivered in good health, injury after being put in with other bulls or a mother nature event. With what it cost to produce these bulls and get them to sale like many other seed-stock producers we are now offering a Platinum Warranty Program. After you purchase your bull, you can insure him through SRA and we will 100% back him up through the first breeding season.

Insurance is needed to make business sense for SRA to work to help you replace a bull that was in 100% in great health and breeding soundness at sale time. With our investment to deliver top notch bulls we must protect our investment as well to keep our program headed in the right direction. We will always honor our product. As part of honoring our product we are offering with the Platinum Warranty Program, to protect our customer as we continue to improve our herd to benefit yours.

HOW SRA WARRANTY PROGRAM WORKS

- Buyer Pays 8.50 % of the bull purchase price at close out of your purchase on sale day. This covers your bull the through breeding season and has 100% of the purchase price guarantee less the salvage value when applicable. A trade out bull is always an option if buyer and seller agree that the value of this bull is equal to the original purchase.

If the new bull owner chooses not to insure their bull on sale day, the liability of and health issues that happens to the bull will be on the new owner after purchase date.



WFY
WEHRS FEED YARD

Wehrs Feed yard is a sponsor of the 2022 SRA Sale. We are a 2,000 head capacity feed yard in Milford, Nebraska. We pride ourself on a clean very tight ran operation. We invite any SRA customer to visit with us about backgrounding or finishing your cattle. We enjoy working with people who are in it day to day like us. We treat your cattle like our own. Examples would be bedding down the calves in a feed yard when winter gets tough and conditions are not ideal. We can put the weight on your calves fast and get them to the sale weight you desire with balanced rations from our nutritional team. We have fed and prepared the purebred cattle that are on the sale offering today over the last six months.

Contact us today about feeding your calves!

Bob Wehrs: 402-641-1111

Austin Schweitzer: 402-641-8275

Sponsor



\$500
**VOUCHER FOR
NEW CUSTOMERS**

FEMALES

66 SRA PROFITBUILDER 13510

REG: 4457301 / DOB: 1/26/21 / TAT: 1351B / BREED: 100% AR

LSF TAKEOVER 9943W
H2R PROFITBUILDER B403
BROWN MS P707 Y6674

HXC CONQUEST 4405P
LSF WIDELOAD R5014 U8061
BECKTON NEBULA P P707
BROWN MS MISSION STMT T6963
SIX MILE TIMBERLAKE 180T
RED SIX MILE FLOWER 713S
OLC YOD CHATO S230
YCRA GOLDBAR G8



RED SIX MILE TIMBERLINE 880W
AJS 351
YCRA GOLDBAR A38

ProS	HB	GM	CED	BW	VW	YW	ADG	MILK	ME	HPG	CEM	STAY	MARB	YG	CW	REA	FAT
65	22	42	14	-4	53	89	0.22	22	2	12	9	9	0.52	0.11	17	-0.01	0.03
87%	95%	36%	27%	14%	73%	64%	51%	81%	43%	31%	10%	98%	25%	75%	73%	79%	73%

1351B may be the hardest heifer to let go. Her mother is one of 6 heifers we have kept that is out of our A38 donor cow for sale later in the sale. The progeny of this dam has produced over \$21,000 for us in the last six years. This Profitbuilder daughter will never disappoint on pasture tours for a long time.



Lot 66

67 SRA BIEBER MAKING HAY 1667

REG: 4457331 / DOB: 2/3/21 / TAT: 1667 / BREED: 100% AR

BIEBER MAKE MIMI 7249
BIEBER MAKIN HAY 9913
BIEBER ADELLE 8958

BJR MAKE MY DAY 981
BIEBER SIRENA 6708
BIEBER TITAN 6894
BIEBER ADELLE 7226
PIE CODE RED 9058
MISS BHR PRINCESS 53
HAYCOW BANDO 1145
TBS MS CANYON CHIEF 107



BHR CODE RED 2143
TBS RED BANDI 6103
TBS MS BANDO CANYON 380

ProS	HB	GM	CED	BW	VW	YW	ADG	MILK	ME	HPG	CEM	STAY	MARB	YG	CW	REA	FAT
97	61	37	9	1.2	69	108	0.24	25	8	8	8	18	0.37	0.07	35	0.13	0
35%	33%	49%	91%	94%	19%	25%	36%	52%	81%	92%	27%	19%	60%	51%	10%	47%	13%

A Bieber Makin Hay daughter we were trying to make a bull. A female full of performance. Top 30% in all major gain categories. Her dam goes back to PIE CODE RED. One of the best that left the breed fast due to early death.



Lot 67

68 SRA REDEMPTION 166

REG: 4457315 / DOB: 1/26/21 / TAT: 166 / BREED: 100% AR

BECKTON NEBULA P P707
BROWN JYI REDEMPTION Y1334
JYI MS JOLENE W16

BECKTON NEBULA M045
BECKTON LANA M809 EP
LJC MISSION STATEMENT P27
HXC JOLENE R548
BECKTON EPIC K F075
BECKTON KIT F468 JL
3SCC SENSATION R289
TBS MS CANYON 695



BECKTON EPIC R397 K
TBS SEN EPIC 66
TBS MS SEN CANYON 828

ProS	HB	GM	CED	BW	VW	YW	ADG	MILK	ME	HPG	CEM	STAY	MARB	YG	CW	REA	FAT
115	64	51	13	-3.3	54	93	0.25	22	4	13	7	17	0.5	0.14	26	-0.01	0.02
13%	27%	19%	48%	23%	73%	57%	34%	76%	56%	22%	44%	27%	28%	86%	35%	79%	66%

SRA Redemption 166 is a great Redemption daughter. We are slower to get out of Redemption than most Red Angus breeders. Mostly because of the heifers he produces like this one. Her dam goes back to Beckton Epic which needs no introduction in the breed.



Lot 68



Lot 69

69 SRA REDEMPTION MIMI 1853

REG: 4457379 / DOB: 1/14/21 / TAT: 1853 / BREED: 100% AR

BECKTON NEBULA P P707
BROWN JYJ REDEMPTION Y1334
 JYJ MS JOLENE W16

JAG DESIGN 108Y
SRA REDEMPTION 8533
 JAG LANA 815U

BECKTON NEBULA M045
 BECKTON LANA M809 EP
 LJC MISSION STATEMENT P27
 HXC JOLENE R548
 5L DOUBLE DESIGN 1177-227W
 JAG JULIE 820U
 BASIN CHEROKEE 2926
 JAG LANA 613S



ProS	HB	GM	CED	BW	WW	YW	ADG	MILK	ME	HPG	CEM	STAY	MARB	YG	CW	REA	FAT
95	64	30	18	-6.3	53	85	0.2	26	4	11	9	18	0.38	0.04	21	0.07	0
40%	26%	65%	4%	2%	76%	73%	66%	41%	59%	46%	15%	21%	56%	35%	57%	62%	21%

This heifer will be an absolute heifer bull maker. Her granddam Jag 815U was the start of herd from Jim Gosey. Another Redemption sired heifer that fits the SRA mold, but the space is overcrowded so we are letting her go. Top 5% in the breed in BW and CED



Lot 70

70 WKK-SRA ENERGIZE 1470E

REG: 4481253 / DOB: 3/27/1900 / TAT: 1470E / BREED: 96.9% AR 3.1% XX

BIEBER CL ATOMIC C218
BIEBER CL ENERGIZE F121
 BIEBER CL ADELLE 575D

MLK CRK UNIFIED 4207
BIEBER DURHEIM 470E
 BIEBER DURHEIM 290A

ANDRAS FUSION R236
 BIEBER DATELINE 308Y
 BIEBER HARD DRIVE Y120
 BIEBER ADELLE 297Y
 ANDRAS FUSION R236
 MLK CRK LAKOTA 953
 BIEBER H HUGHES W109
 BD3P DURHEIM 751



ProS	HB	GM	CED	BW	WW	YW	ADG	MILK	ME	HPG	CEM	STAY	MARB	YG	CW	REA	FAT
136	65	72	17	-4.6	64	111	0.3	31	6	10	11	17	0.56	0.09	39	0.32	0.03
3%	26%	3%	5%	9%	35%	19%	8%	9%	72%	75%	2%	32%	18%	66%	6%	13%	72%



Lot 71

71 SRA DOMAIN 1862

REG: 4457377 / DOB: 87B / TAT: 1862 / BREED: 100% AR

BECKTON DOMINOR T122 Z1
3SCC DOMAIN A163
 3SCC EUCLA X723

BROWN JYJ REDEMPTION Y1334
SRA REDEMPTION 8629
 TBS DAISY 629

BECKTON DOMINOR Z1 R610
 BKT LARKABEL R038 WA
 BASIN HOBO 0545
 BSKF EUCLA U278
 BECKTON NEBULA P P707
 JYJ MS JOLENE W16
 BHR BASES LOADED 389
 TBS CHIEF DAISY 202



ProS	HB	GM	CED	BW	WW	YW	ADG	MILK	ME	HPG	CEM	STAY	MARB	YG	CW	REA	FAT
119	70	49	13	-2	57	96	0.25	23	2	13	5	19	0.56	0.13	25	0.04	0.03
10%	18%	22%	39%	46%	62%	50%	35%	69%	46%	15%	83%	10%	18%	86%	41%	68%	81%

A Domain daughter going back to a Redemption dam. If you follow Genex Semen this is the mold of the top two selling sires in the Red Angus breed! Her mother has a outstanding Red Blood bull calf this year that will no doubt be a leader in next years sale.



72 SRA MAKING HAY 1340

REG: 4457259 / DOB: 87C / TAT: 1340 / BREED: 100% AR

BIEBER MAKE MIMI 7249
BIEBER MAKIN HAY 9913
 BIEBER ADELLE 8958

BC MAC
HLH MISS MAC 7217 3400
 HLH SHYANN 871 7217

BJR MAKE MY DAY 981
 BIEBER SIRENA 6708
 BIEBER TITAN 6894
 BIEBER ADELLE 7226
 BFCK CHEROKEE CNYN 4912
 SSS MISS TRICIA 024
 LCC CHEYENNE B221L
 HLH HILASSI 313 871



ProS	HB	GM	CED	BW	WW	YW	ADG	MILK	ME	HPG	CEM	STAY	MARB	YG	CW	REA	FAT
95	54	41	12	-1.4	70	111	0.25	26	8	7	9	16	0.38	0.11	41	0.17	0.01
39%	46%	39%	60%	58%	20%	29%	41%	82%	97%	11%	35%	56%	74%	4%	38%	33%	

Another Bieber Makin Hay daughter in the top 30% of the breed for WW,ADG and YW. A heifer that will turn into a cow with longevity and produce power bulls. Her mother is 9 years old had a foot injury this year, lost all her condition and still produced a great A.I. calf in January.

73 SRA RAGNAR 16117

REG: 4457327 / DOB: 3/18/21 / TAT: 16117 / BREED: 100% AR

PIE CODE RED 9058
KAW RAGNAR 527
 KAW M26P BECTORIA 963

VGW GAME PLAN 508
 PIE STORMY 541
 RED FINE LINE MULBERRY 26P
 JAG LANA 516R
 PIE CODE RED 9058
 MISS BHR PRINCESS 53
 LSF NSF POUNDMAKER 9534W
 NAMKEN NORTHSTAR 13N



BHR CODE RED 2143
TBS RED STAR 6117
 NAMKEN NORTHSTAR 25-42Y

ProS	HB	GM	CED	BW	VW	YW	ADG	MILK	ME	HPG	CEM	STAY	MARB	YG	CW	REA	FAT
98	73	25	9	1.2	57	94	0.23	23	8	13	8	19	0.3	0.04	18	-0.07	-0.01
34%	14%	75%	88%	94%	62%	54%	44%	75%	79%	20%	35%	11%	79%	36%	69%	88%	6%

A Kaw Ragnar daughter going back to a Pie Code Red Daughter. Top 15% for HerdBuilder. She is a late March calver but still stands out among the January calves.



Lot 73

74 SRA ROLLING DEEP 17348A

REG: 4457349 / DOB: 2/12/21 / TAT: 1348A / BREED: 100% AR

BIEBER ROLLIN DEEP Y118
SRN ALISTAR 1635
 MESSMER LINDA T112

BIEBER ROOSEVELT W384
 BIEBER TILLY 399W
 BECKTON LANCER F442 T
 MESSMER LINDA 2322
 BIEBER MAKE MIMI 7249
 FEDDES LAKINA 310
 OLC YOD CHATO S230
 YCRA KURUBA G33



FEDDES BIG SKY R9
AJS BIG SKY 7348
 YCRA KURUBA A65

ProS	HB	GM	CED	BW	VW	YW	ADG	MILK	ME	HPG	CEM	STAY	MARB	YG	CW	REA	FAT
84	51	33	9	1.3	65	103	0.24	27	6	10	6	16	0.36	-0.06	24	0.38	0
57%	52%	58%	92%	94%	31%	34%	38%	34%	68%	63%	72%	39%	61%	5%	44%	8%	15%

The next two heifers dams are twins going back to Feddes Big Sky. Every year their dams continue to produce. Each year the sisters calve within 24 hours of each other. This year they have two bull calves on the ground that will be top sale prospects. Here is your chance to get into the heart out of herd with some heifers with a grandsire of the great Bieber Rolling Deep.



Lot 74

75 SRA ROLLING DEEP 1348B

REG: 4457357 / DOB: 2/13/21 / TAT: 1348B / BREED: 100% AR

BIEBER ROLLIN DEEP Y118
SRN ALISTAR 1635
 MESSMER LINDA T112

BIEBER ROOSEVELT W384
 BIEBER TILLY 399W
 BECKTON LANCER F442 T
 MESSMER LINDA 2322
 BIEBER MAKE MIMI 7249
 FEDDES LAKINA 310
 OLC YOD CHATO S230
 YCRA KURUBA G33



FEDDES BIG SKY R9
AJS 7348B BIG SKY
 YCRA KURUBA A65

ProS	HB	GM	CED	BW	VW	YW	ADG	MILK	ME	HPG	CEM	STAY	MARB	YG	CW	REA	FAT
82	47	35	7	2.9	68	109	0.26	25	6	10	5	16	0.35	-0.06	25	0.39	0
61%	61%	54%	98%	99%	20%	23%	28%	50%	67%	63%	90%	39%	64%	6%	39%	8%	13%



Lot 75

76 SRA RAGNAR 1642

REG: 4457333 / DOB: 2/15/21 / TAT: 1642 / BREED: 100% AR

PIE CODE RED 9058
KAW RAGNAR 527
 KAW M26P BECTORIA 963

VGW GAME PLAN 508
 PIE STORMY 541
 RED FINE LINE MULBERRY 26P
 JAG LANA 516R
 FORSTER HOBO X001
 TBS MS PRINCE 527
 BECKTON NEBULA Y253 03
 EURA FLAME 904-117Y



TBS HOBO PRINCE 3360
TBS FLAME HOBI 642
 LEWIS FLAME 304

ProS	HB	GM	CED	BW	VW	YW	ADG	MILK	ME	HPG	CEM	STAY	MARB	YG	CW	REA	FAT
88	67	21	14	-3.1	54	86	0.2	27	3	12	8	17	0.29	0.03	16	-0.02	0
52%	23%	82%	33%	25%	72%	70%	66%	32%	50%	33%	32%	25%	80%	32%	76%	81%	13%

A Kaw Ragnar daughter that is deep like her mother. A top prospect cow. Her mother is also for sale later in the sale only due to a late calving date.



Lot 76

77 SRA ROLLING DEEP 0579

REG: 4457285 / DOB: 2/22/21 / TAT: 1579 / BREED: 100% AR

BIEBER ROLLIN DEEP Y118
SRN ALISTAR 1635
 MESSMER LINDA T112

26P RED FINE WINE
KAW MS MULBERRY 2X 579
 KAW M26P BECTORIA 963

BIEBER ROOSEVELT W384
 BIEBER TILLY 399W
 BECKTON LANCER F442 T
 MESSMER LINDA 2322
 RED FINE LINE MULBERRY 26P
 SOR MINERVO ENT 0029K
 RED FINE LINE MULBERRY 26P
 JAG LANA 516R



ProS	HB	GM	CED	BW	VW	YW	ADG	MILK	ME	HPG	CEM	STAY	MARB	YG	CW	REA	FAT
92	65	27	13	-1.5	63	102	0.24	28	5	12	9	16	0.27	-0.02	22	0.28	0.01
45%	26%	71%	37%	56%	37%	36%	37%	27%	63%	31%	10%	43%	85%	13%	51%	18%	25%

A great heifer out of dam from Mulberry 26P.



Lot 79

78 SRA NEW DIRECTION 1551

REG: 4457293 / DOB: 3/15/21 / TAT: 15518 / BREED: 100% AR

ANDRAS NEW DIRECTION R240
AJS NEW DIRECTION ELITE
 JAG LANA 815U

SANDERSON KING ROLLO 22V
LMG MISS VERDALE 5518
 LUCHT VERDALE 53

ANDRAS IN FOCUS B152
 ANDRAS KURUBA B111
 BASIN CHEROKEE 2926
 JAG LANA 613S
 5L NORSEMAN KING 2291
 BIEBER FLOWER 9710
 LUCHT ROMEO R052
 LUCHT VERDALE R06



ProS	HB	GM	CED	BW	VW	YW	ADG	MILK	ME	HPG	CEM	STAY	MARB	YG	CW	REA	FAT
89	54	35	15	-3.6	51	83	0.2	24	4	11	8	16	0.33	0.03	22	0.18	0.01
50%	48%	54%	20%	18%	80%	76%	68%	61%	57%	46%	29%	43%	70%	28%	53%	37%	36%

Another Kaw Ragnar 527 daughter we have to part with. Her mother has brought us over \$15,000 in bulls in the last five years. We are also letting her mother go later in the sale, only due not being able to move her up in the calving cycle.

79 SRA ROLLING DEEP 1782

REG: 4457343 / DOB: 2/8/21 / TAT: 17823 / BREED: 100% AR

BIEBER ROLLIN DEEP Y118
SRN ALISTAR 1635
 MESSMER LINDA T112

LSF SAGA 1040Y
RRR MELODY 1104 782
 RRR MELODY 7008 1104

BIEBER ROOSEVELT W384
 BIEBER TILLY 399W
 BECKTON LANCER F442 T
 MESSMER LINDA 2322
 BECKTON EPIC R397 K
 LSF MINOLA T7172 W9041
 BADLANDS LOADED 78W
 RRR MELODY 4002 7008



ProS	HB	GM	CED	BW	VW	YW	ADG	MILK	ME	HPG	CEM	STAY	MARB	YG	CW	REA	FAT
71	36	35	10	0.2	68	115	0.29	25	11	9	6	15	0.23	0.03	32	0.29	0.01
80%	81%	54%	80%	85%	22%	14%	9%	49%	92%	86%	79%	49%	91%	32%	18%	17%	39%

A great power heifer prospect. Top 15% in YW, ADG, and YW. Her dam's sire is LSF SAGA!

80 SRA ROLLING DEEP 1730

REG: 4457359 / DOB: 3/1/21 / TAT: 1730 / BREED: 100% AR

BIEBER ROLLIN DEEP Y118
SRN ALISTAR 1635
 MESSMER LINDA T112

JAG DESIGN 108Y
AJS 7305 SRA REDM
 JAG LANA 815U

BIEBER ROOSEVELT W384
 BIEBER TILLY 399W
 BECKTON LANCER F442 T
 MESSMER LINDA 2322
 5L DOUBLE DESIGN 1177-227W
 JAG JULIE 820U
 BASIN CHEROKEE 2926
 JAG LANA 613S



ProS	HB	GM	CED	BW	VW	YW	ADG	MILK	ME	HPG	CEM	STAY	MARB	YG	CW	REA	FAT
74	57	16	12	-1.1	63	98	0.22	28	5	9	7	17	0.19	-0.09	20	0.4	0
75%	40%	89%	52%	64%	38%	46%	56%	26%	62%	82%	55%	25%	95%	3%	62%	7%	12%

A heifer that's grandsire goes back to Beiber Rolling Deep. A deep heifer with lots of potential



Lot 82

81 SRA ROLLING DEEP 1851

REG: 4457371 / DOB: 2/11/21 / TAT: 1851 / BREED: 100% AR

BIEBER ROLLIN DEEP Y118
SRN ALISTAR 1635
 MESSMER LINDA T112

BROWN COMPLETE B238
SRA BC 8519
 LMG MISS TINA 55199

BIEBER ROOSEVELT W384
 BIEBER TILLY 399W
 BECKTON LANCER F442 T
 MESSMER LINDA 2322
 LSF TAKEOVER 9943W
 BROWN MS P707 X7580
 LMG GILLS INDEED 1603
 LUCHT TINA 996



ProS	HB	GM	CED	BW	VW	YW	ADG	MILK	ME	HPG	CEM	STAY	MARB	YG	CW	REA	FAT
72	40	32	13	-2.7	59	94	0.22	28	5	10	8	14	0.43	0	18	0.25	0.02
78%	75%	61%	37%	32%	55%	55%	53%	23%	63%	77%	27%	70%	43%	20%	69%	23%	54%

Another heifer with great visual appeal and movement throughout.

82 SRA RAGBAR 1766

REG: 4457353 / DOB: 3/8/21 / TAT: 1766 / BREED: 100% AR

PIE CODE RED 9058
KAW RAGNAR 527
 KAW M26P BECTORIA 963

LSF SRR FOREMOST 5314C
AJS 7668 SRA FOREMOST
 LMG MISS ROCKER 5668

VGW GAME PLAN 508
 PIE STORMY 541
 RED FINE LINE MULBERRY 26P
 JAG LANA 516R
 BROWN PREMIER X7876
 SRR VICTORIA JOAN 277-675
 LMG GILLS INDEED 1603
 LMG MISS ROCKER 0006



ProS	HB	GM	CED	BW	VW	YW	ADG	MILK	ME	HPG	CEM	STAY	MARB	YG	CW	REA	FAT
103	64	39	13	-3.5	56	92	0.22	28	6	12	9	17	0.4	0.03	24	0.07	0
27%	28%	43%	43%	20%	65%	59%	51%	27%	69%	29%	17%	33%	51%	30%	45%	62%	10%

A heifer making bull in the top 20% in BW and top 40% in CED. Her dam goes back LSF Foremost from Gill Red Angus.

83 1PF MS RIBEYE 12

REG: 4466483 / DOB: 02-26-2021 / TAT: 12 / BREED: 100% AR

RED COCKBURN RIBEYE 308U
DBOR POWER EYE G10
SRA SWEET CHEEKS

RED BAR-E-L RIBEYE 103R
RED WILBAR CORA 443P
NBAR VULCAN 507
SRA SUGAR FOOT



ORT LOOKOUT 6023
RHODES BLOCKANA C10
FEDDES BLOCKANA X179

RED LAZY MC LOOKOUT 153X
RED SIX MILE LANA 0917W
FEDDES GRAND CHER 7125
FEDDES BLOCKANA 7139

ProS	HB	GM	CED	BW	VW	YW	ADG	MILK	ME	HPG	CEM	STAY	MARB	YG	CW	REA	FAT
79	48	31	9	0.3	57	90	0.21	26	0	11	5	15	0.36	0.04	22	0	-0.01
67%	60%	63%	90%	86%	63%	64%	64%	46%	32%	53%	82%	56%	61%	35%	53%	77%	8%

A great heifer Consigned by Polivka Farms. A deep heifer that will be a herd builder.

Consigned by POLIVKA FARMS



Lot 83

84 SRA LIBERTY 1910

REG: 4457391 / DOB: 2/9/21 / TAT: 1910 / BREED: 100% AR

FEDDES LIBERTY D210
ANDRAS LIBERTY F176
ANDRAS CHEY BRILLIANCE D117

5L INDEPENDENCE 560-298Y
FEDDES SLEEK 806
ANDRAS BRILLIANCE B002
ANDRAS CHEYENNE 1139



FEDDES BIG SKY R9
SRA BIG SKY VAL 9102
TBS BASIC MONA 6102

BIEBER MAKE MIMI 7249
FEDDES LAKINA 310
BHR BASES LOADED 389
TBS MONA BECKER 259

ProS	HB	GM	CED	BW	VW	YW	ADG	MILK	ME	HPG	CEM	STAY	MARB	YG	CW	REA	FAT
99	67	32	12	-0.3	54	84	0.19	21	1	13	6	18	0.59	0.06	8	-0.1	0.01
33%	22%	60%	64%	78%	73%	75%	74%	86%	37%	17%	78%	21%	14%	45%	93%	92%	33%

Our only heifer we are letting go sired by Andras Liberty F176!

85 SRA RAGNAR 16124

REG: 4457337 / DOB: 3/29/21 / TAT: 16124 / BREED: 100% AR

PIE CODE RED 9058
KAW RAGNAR 527
KAW M26P BECTORIA 963

VGW GAME PLAN 508
PIE STORMY 541
RED FINE LINE MULBERRY 26P
JAG LANA 516R



ANDRAS NEW DIRECTION R240
TBS NEW CRYSTAL 6124
TBS CRYSTAL SUNKING 447

ANDRAS IN FOCUS B152
ANDRAS KURUBA B111
LARSON SUN KING 016
TBS CYRSTAL CANYON 738

ProS	HB	GM	CED	BW	VW	YW	ADG	MILK	ME	HPG	CEM	STAY	MARB	YG	CW	REA	FAT
102	63	39	13	-2.6	50	85	0.22	23	4	14	8	16	0.42	0.09	23	-0.04	0.01
28%	28%	44%	39%	33%	83%	72%	54%	72%	58%	7%	26%	43%	46%	66%	50%	85%	31%

The remaining heifers, lots 84-90 we are selling in groups of three. We believe there are bargains when you look deeper into EPDs. We have always gone with selling groups of three to give customers an opportunity to have a larger portion of heifers to work with from our herd.

86 SRA 186I

REG: 4507757 / DOB: 4/25/21 / TAT: 186I / BREED: 100% AR

LSF CONQUEROR 0026X
AMBER LIGHT CONQUEROR 607
ALRA NIGHT CALVER 454

HXC CONQUEST 4405P
LSF DINA R5000 U8039
LSF NIGHT CALVER 9921W
AMBERLIGHT MOVETTE 237

ProS	HB	GM	CED	BW	VW	YW	ADG	MILK	ME	HPG	CEM	STAY	MARB	YG	CW	REA	FAT
87	24	63	10	0.9	64	109	0.28	26	0	0	5	9	0.45	0.1	17	0.07	0.04
52%	94%	6%	86%	92%	34%	22%	13%	40%	33%	99%	81%	97%	39%	72%	74%	62%	86%

85B SRA 1122I

REG: 4507737 / DOB: 5/2/21 / TAT: 1122I / BREED: 93.8% AR 6.2% XX

C-BAR ANTICIPATION 101W
ALRA YIELD ANTICIPATE 524C
AMBERLIGHT YIELDGRADE 309

RED CROWFOOT OLE'S OSCAR
BROWN MS ABIGRACE L7730
LSF YIELD GRADE 0066X
AMBERLIGHT CHATEAU 844

ProS	HB	GM	CED	BW	VW	YW	ADG	MILK	ME	HPG	CEM	STAY	MARB	YG	CW	REA	FAT
93	33	60	12	-1.1	58	93	0.22	26	0	0	7	10	0.45	-0.01	16	0.13	0
42%	85%	9%	61%	64%	57%	58%	57%	43%	33%	99%	51%	94%	39%	14%	75%	47%	13%

85C SRA 1131I

REG: 4507747 / DOB: 5/3/21 / TAT: 1131I / BREED: 93.8% AR 6.2% XX

ANDRAS NEW DIRECTION R240
AMBER LIGHT NEWDIRECTION 616
AMBER LIGHT GALATAEYA 454

ANDRAS IN FOCUS B152
ANDRAS KURUBA B111
LCC MARKET PLACE 1270K
AMBERLIGHT GALATAEYA 162

ProS	HB	GM	CED	BW	VW	YW	ADG	MILK	ME	HPG	CEM	STAY	MARB	YG	CW	REA	FAT
84	22	62	14	-3.5	44	74	0.19	25	0	0	7	9	0.41	0.11	23	-0.01	0.02
57%	95%	7%	27%	20%	92%	87%	76%	55%	33%	99%	55%	96%	48%	78%	48%	79%	57%

86B SRA 130I

REG: 4507765 / DOB: 4/15/21 / TAT: 130I / BREED: 93.7% AR 6.3% XX

ANDRAS NEW DIRECTION R240
ECCO DIRECT 712E
AMBERLIGHT 024

ANDRAS IN FOCUS B152
ANDRAS KURUBA B111
LCC ABOVE & BEYOND 1300J
AMBER LIGHT GLORY 453

ProS	HB	GM	CED	BW	VW	YW	ADG	MILK	ME	HPG	CEM	STAY	MARB	YG	CW	REA	FAT
85	25	60	13	-2.3	56	92	0.23	26	0	0	7	9	0.4	0.09	22	0.07	0.02
56%	93%	9%	39%	40%	65%	59%	50%	45%	33%	99%	39%	98%	51%	66%	52%	62%	66%

86C SRA 1101I

REG: 4507775 / DOB: 4/28/21 / TAT: 1101I / BREED: 100% AR

ALRA REDEMPTION 453
ECCO OUTLOOK REDEMPTION 633D
AMBERLIGHT OUTLOOK 339

BROWN JY REDEMPTION Y1334
AMBERLIGHT SAK 146
LSF OUTLOOK 0410X
AMBERLIGHT MAJORETTE 721

ANDRAS NEW DIRECTION R240
ECCO 815F
AMBERLIGHT SACETTE 310

ANDRAS IN FOCUS B152
ANDRAS KURUBA B111
LSF CYCLONE 9934W
AMBERLIGHT SACETTE 158

ProS	HB	GM	CED	BW	VW	YW	ADG	MILK	ME	HPG	CEM	STAY	MARB	YG	CW	REA	FAT
87	47	39	13	-2.8	69	110	0.25	26	9	14	8	14	0.48	0.16	35	0.07	0.03
54%	61%	43%	46%	31%	17%	21%	31%	43%	84%	11%	37%	71%	32%	93%	11%	62%	76%

87 SRA 170I

REG: 4507787 / DOB: 4/22/21 / TAT: 170I / BREED: 99.9% AR 0.1% XX

WFL MERLIN 018A
ECCO 956G
ECCO WIDE HEADLINER 613D

LJC MERLIN T179
WFL COMMITMENT 042Y
LSF SRR HEADLINER 3105A
AMBERLIGHT WS 209

ANDRAS NEW DIRECTION R240
ECCO 912G
LELAND PRESSIVE 236-5429

ANDRAS IN FOCUS B152
ANDRAS KURUBA B111
MUSHRUSH IMPRESSIVE CA U236
LELAND FIRE Y134

ProS	HB	GM	CED	BW	VW	YW	ADG	MILK	ME	HPG	CEM	STAY	MARB	YG	CW	REA	FAT
67	30	37	10	-0.3	67	108	0.26	28	2	11	4	13	0.39	0.03	25	0.23	0.02
84%	89%	48%	82%	78%	22%	23%	27%	24%	46%	42%	95%	79%	53%	32%	39%	26%	47%

88 SRA 1128I

REG: 4507739 / DOB: 5/3/21 / TAT: 1128I / BREED: 93.8% AR 6.2% XX

C-BAR ANTICIPATION 101W
AMBERLIGHT BOUTIQUE 541
AMBERLIGHT AVANA 916

RED CROWFOOT OLE'S OSCAR
BROWN MS ABIGRACE L7730
AMBERLIGHT GRAND VAQUERO 559
AMBERLIGHT BOUTIQUE 061

ProS	HB	GM	CED	BW	VW	YW	ADG	MILK	ME	HPG	CEM	STAY	MARB	YG	CW	REA	FAT
80	21	59	10	0	56	94	0.24	23	0	0	6	9	0.42	0.02	14	0.01	0
65%	95%	10%	81%	82%	65%	55%	41%	70%	33%	99%	70%	98%	46%	27%	81%	75%	16%

87B SRA 1113I/1133

REG: 4507741 / DOB: 4/30/21 / TAT: 1113I / BREED: 93.8% AR 6.2% XX

LSF HERDBUILDER 1058Y
ALRA DESIGN HERD 544C
AMBERLIGHT GALATAEYA 905

BECKTON EPIC R397 K
LSF COVER GIRL S6076 W9037
5L DIRECT DESIGN 893-6315
AMBLIGHT GALATAEYA 162

ProS	HB	GM	CED	BW	VW	YW	ADG	MILK	ME	HPG	CEM	STAY	MARB	YG	CW	REA	FAT
103	39	65	10	0.8	59	94	0.22	30	0	0	6	11	0.44	0.03	23	0.16	0.01
26%	77%	6%	86%	91%	55%	55%	54%	10%	33%	99%	70%	89%	41%	32%	47%	40%	33%

88B SRA 161I

REG: 4507743 / DOB: 4/21/21 / TAT: 161I / BREED: 100% AR

LSF HERDBUILDER 1058Y
ECCO JACK HERDBUILDER 601D
AMBERLIGHT JACK 123

BECKTON EPIC R397 K
LSF COVER GIRL S6076 W9037
HXC JACKHAMMER 8800U
AMBERLIGHT VIKING 834

ProS	HB	GM	CED	BW	VW	YW	ADG	MILK	ME	HPG	CEM	STAY	MARB	YG	CW	REA	FAT
114	68	46	13	-1.4	50	84	0.21	26	0	0	8	16	0.38	0.01	6	0.01	0.01
14%	21%	28%	40%	58%	81%	75%	63%	39%	33%	99%	27%	45%	56%	21%	95%	75%	31%

87C SRA RAGNARS 1405

REG: 4553635 / DOB: 5/15/21 / TAT: 1405 / BREED: 100% AR

PIE CODE RED 9058
KAW RAGNAR 527
KAW M26P BECTORIA 963

VGW GAME PLAN 508
PIE STORMY 541
RED FINE LINE MULBERRY 26P
JAG LANA 516R

LJC MISSION STATEMENT P27
TYE 531
C-T MISS PAN 0760

LJC LANCER 806
LJC HANNAH 106
LCHMN GRANDCANYON 1244G
CTDB HOBOS GAL 803

ProS	HB	GM	CED	BW	VW	YW	ADG	MILK	ME	HPG	CEM	STAY	MARB	YG	CW	REA	FAT
94	57	37	12	-2.3	53	88	0.22	25	2	12	9	15	0.38	0.02	21	0.09	0
40%	41%	47%	54%	39%	76%	67%	52%	54%	44%	32%	17%	57%	57%	27%	57%	58%	14%

88C SRA 167I

REG: 4507749 / DOB: 4/22/21 / TAT: 167I / BREED: 100% AR

LSF HERDBUILDER 1058Y
ECCO EXPECT HERDBUILDER 631D
AMBERLIGHT EXPECTATION 338

BECKTON EPIC R397 K
LSF COVER GIRL S6076 W9037
LSF JBOB EXPECTATION 6034S
AMBERLIGHT 034

ProS	HB	GM	CED	BW	VW	YW	ADG	MILK	ME	HPG	CEM	STAY	MARB	YG	CW	REA	FAT
96	38	59	13	-2.4	53	86	0.2	29	0	0	8	10	0.49	0.01	13	0.15	0.01
37%	79%	10%	45%	38%	73%	71%	67%	16%	33%	99%	24%	93%	30%	21%	83%	42%	45%



HEARTLAND NUTRITION

"YOUR PASSION, OUR PURPOSE"

HEATH CLAUSEN

402-750-4433 LEIGH, NE

ADDING VALUE TO YOUR OPERATION

- ADDED PERFORMANCE TO YOUR COW HERD
- CUSTOM MINERAL – PROBIOTIC BLENDS
- GARLIC- CLARIFLY-CAYENNE BLENDS FOR FLY AND HEAT
- FEEDER PROGRAMS FOR ADDED DAILY GAIN AND VALUE
- RUMEN HEALTH AND IMPROVING RUMEN PERFORMANCE
- * CUSTOM NUTRITION WORK
- * FEED AND HAY TESTING
- * CATTLE MARKETING

89 SRA 157I

REG: 4507751 / DOB: 4/20/21 / TAT: 157I / BREED: 93.8% AR 6.2% XX

LSF HERDBUILDER 1058Y
ECCO MAJOR HERDBUILDER 617D
 AMBERLIGHT MAJORETTE 626

BECKTON EPIC R397 K
 LSF COVER GIRL S6076 W9037
 LCC MAJOR LEAGUE A502M
 AMBERLIGHT 068

ProS	HB	GM	CED	BW	VW	YW	ADG	MILK	ME	HPG	CEM	STAY	MARB	YG	CW	REA	FAT
97	46	51	12	-1.6	53	83	0.19	28	0	0	8	12	0.41	0.01	14	0.11	0.01
35%	64%	18%	54%	54%	74%	76%	74%	23%	33%	99%	37%	84%	48%	23%	82%	52%	33%

90 SRA 128I

REG: 4507769 / DOB: 4/14/21 / TAT: 128I / BREED: 100% AR

FEDDES OSCAR X28
ECCO MISS OSCAR 733E
 ALRA MAJOR SAKETTE 572C

RED CROWFOOT OLE'S OSCAR
 FEDDES SLEEK 806
 AMBERLIGHT SAKIC 219
 AMBERLIGHT MAJORETTE 626

ProS	HB	GM	CED	BW	VW	YW	ADG	MILK	ME	HPG	CEM	STAY	MARB	YG	CW	REA	FAT
88	35	53	15	-3.1	50	83	0.2	28	0	0	8	10	0.44	0.08	12	-0.05	0.02
51%	83%	16%	23%	25%	81%	77%	68%	27%	33%	99%	27%	93%	41%	57%	85%	86%	48%

89B SRA 1110I

REG: 4507759 / DOB: 4/29/21 / TAT: 1110I / BREED: 93.8% AR 6.2% XX

ANDRAS NEW DIRECTION R240
ECCO DIRECT 702E
 AMBERLIGHT MAJORETTE 619

ANDRAS IN FOCUS B152
 ANDRAS KURUBA B111
 LCC MAJOR LEAGUE A502M
 AMBERLIGHT POWERETTE 279

ProS	HB	GM	CED	BW	VW	YW	ADG	MILK	ME	HPG	CEM	STAY	MARB	YG	CW	REA	FAT
81	24	58	14	-2.9	50	80	0.19	25	0	0	7	9	0.41	0.07	20	0.08	0.02
63%	94%	11%	29%	29%	82%	80%	75%	54%	33%	99%	44%	97%	48%	53%	59%	59%	52%

90B SRA 113I

REG: 4507771 / DOB: 4/10/21 / TAT: 113I / BREED: 100% AR

ALRA REDEMPTION 453
ECCO OUTLOOK REDEMPTION 633D
 AMBERLIGHT OUTLOOK 339

BROWN JY REDEMPTION Y1334
 AMBERLIGHT SAK 146
 LSF OUTLOOK 0410X
 AMBERLIGHT MAJORETTE 721

ANDRAS NEW DIRECTION R240
ECCO 804F
 AMBERLIGHT YIELDGRADE 309

ANDRAS IN FOCUS B152
 ANDRAS KURUBA B111
 LSF YIELD GRADE 0066X
 AMBERLIGHT CHATEAU 844

ProS	HB	GM	CED	BW	VW	YW	ADG	MILK	ME	HPG	CEM	STAY	MARB	YG	CW	REA	FAT
93	51	42	13	-2.6	66	106	0.25	23	8	13	7	15	0.48	0.12	32	0.11	0.03
43%	53%	37%	48%	33%	27%	27%	30%	67%	81%	22%	39%	57%	32%	81%	18%	52%	68%

89C SRA 176I

REG: 4507763 / DOB: 4/23/21 / TAT: 176I / BREED: 93.8% AR 6.2% XX

ANDRAS NEW DIRECTION R240
ECCO DIRECT 710E
 AMBERLIGHT 228

ANDRAS IN FOCUS B152
 ANDRAS KURUBA B111
 SIX MILE WIN-CHESTER 745W
 AMBERLIGHT RED SEQUAL 573

ProS	HB	GM	CED	BW	VW	YW	ADG	MILK	ME	HPG	CEM	STAY	MARB	YG	CW	REA	FAT
76	22	54	16	-4.6	45	75	0.18	25	0	0	8	9	0.37	0.09	19	-0.02	0.02
72%	95%	15%	8%	9%	91%	87%	77%	53%	33%	99%	22%	98%	60%	67%	65%	81%	48%

90C SRA 1109I

REG: 4507779 / DOB: 4/29/21 / TAT: 1109I / BREED: 99.9% AR 0.1% XX

ALRA REDEMPTION 453
ECCO OUTLOOK REDEMPTION 633D
 AMBERLIGHT OUTLOOK 339

BROWN JY REDEMPTION Y1334
 AMBERLIGHT SAK 146
 LSF OUTLOOK 0410X
 AMBERLIGHT MAJORETTE 721

ANDRAS NEW DIRECTION R240
ECCO 830F
 AMBERLIGHT GRAND VAQ 816

ANDRAS IN FOCUS B152
 ANDRAS KURUBA B111
 AMBERLIGHT GRAND VAQUERO 559
 AMBERLIGHT CANYONETTE 578

ProS	HB	GM	CED	BW	VW	YW	ADG	MILK	ME	HPG	CEM	STAY	MARB	YG	CW	REA	FAT
79	41	38	13	-2.9	62	102	0.25	24	10	12	7	14	0.48	0.15	30	0.02	0.03
67%	73%	47%	42%	29%	41%	37%	35%	63%	89%	31%	44%	65%	32%	92%	22%	73%	73%



91 SRA 1111

REG: 4507781 / DOB: 4/10/21 / TAT: 1111 / BREED: 93.8% AR 6.2% XX

BROWN JYJ REDEMPTION Y1334
ECCO 902G
 ALRA NO EQUAL MOVADO 540C

BECKTON NEBULA P P707
 JYJ MS JOLENE W16
 LCHMN NO EQUAL 1174D
 AMBERLIGHT MOVADO 361

ProS	HB	GM	CED	BW	WW	YW	ADG	MILK	ME	HPG	CEM	STAY	MARB	YG	CW	REA	FAT
95	34	61	13	-2.3	54	90	0.22	26	0	0	7	11	0.46	0.05	17	0.01	0.01
39%	84%	8%	49%	40%	70%	64%	54%	44%	33%	99%	55%	92%	36%	39%	74%	75%	26%

91B SRA 1145I

REG: 4507801 / DOB: 5/7/21 / TAT: 1145I / BREED: 100% AR

3SCC DOMAIN A163
ECCO 942G
 ECCO VAQUERA503 771E

BECKTON DOMINOR T122 Z1
 3SCC EUCLA X723
 ALRA VAQUERO 503C
 ALRA SAKIC VAQUERO 564C

ProS	HB	GM	CED	BW	WW	YW	ADG	MILK	ME	HPG	CEM	STAY	MARB	YG	CW	REA	FAT
88	26	62	13	-1.6	59	97	0.24	28	0	0	6	9	0.42	0.07	20	0.1	0.02
51%	92%	7%	46%	54%	55%	48%	39%	27%	33%	99%	68%	96%	46%	53%	59%	54%	59%

91C SRA 1173I

REG: 4507797 / DOB: 5/17/21 / TAT: 1173I / BREED: 100% AR

WFL MERLIN 018A
ECCO 936G
 ALRA SIX MILE MEDALIST 529C

LJC MERLIN T179
 WFL COMMITMENT 042Y
 RED SIX MILE SAKIC 832S
 AMBERLIGHT MED 157

ProS	HB	GM	CED	BW	WW	YW	ADG	MILK	ME	HPG	CEM	STAY	MARB	YG	CW	REA	FAT
-	0	22	-	-	-	-	-	-	-	-	-	-	-	-	-	-	-
-	99%	80%	-	-	-	-	-	-	-	-	-	-	-	-	-	-	-



95 YCRA GOLDBAR A38

REG: 1641133 / DOB: 2/13/13 / TAT: A38 / BREED: 100% AR / Summer Calving Bred

OLC ELINE CHATO P25
OLC YOD CHATO S230
 OLC MIMI M295

OLC CHATEAU K465
 OLC YOD K347
 BIEBER PROJECT RED 5827
 OLC MIMI H802

YCRA KING ROB
YCRA GOLDBAR G8
 PSR GOLDBAR 819

LMAN KING ROB 8621
 PKO CAYENNE
 BASIN RAINMAKER 1C
 PSR GOLDBAR 2258

ProS	HB	GM	CED	BW	WW	YW	ADG	MILK	ME	HPG	CEM	STAY	MARB	YG	CW	REA	FAT
78	56	21	12	-2	42	69	0.17	22	-1	8	9	16	0.3	0.03	9	0.03	0.02
64%	49%	68%	56%	41%	93%	89%	79%	71%	30%	88%	14%	49%	69%	32%	84%	58%	49%

YCRA GOLDBAR A38 has been one of our most highly productive cows. She is bred to calve between June 1 and July 15. She is bred to 3962145 Weber Reform. We have kept over 8 heifers going back to this cows' genetics. We also flushed her twice. Her highest selling bull calf was \$8,500 in last years sale, and she has been one of our top producers. With all her daughters in our herd it is time for us to let her go.

92 Two Commercial Open Heifers

BRED FEMALES

93 BIEBER ROSE 123F

REG: 3958733 / DOB: 1/8/18 / TAT: 123F / BREED: 100% AR / Fall Calving Bred

BIEBER HARD DRIVE Y120
BIEBER DRIVEN C540
 BIEBER JOAN 309Y

LACY GOLD BAR 8123
 BIEBER LAURA 158W
 LCOC HIGH NOON A093R
 BIEBER JOAN 7502

BIEBER FEDERATION B544
BIEBER ROSE 111D
 BIEBER ROSE 116B

ANDRAS FUSION R236
 BASIN PRIMROSE 0T43
 PARINGA IRON ORE E27
 BIEBER ROSE 198Z

ProS	HB	GM	CED	BW	WW	YW	ADG	MILK	ME	HPG	CEM	STAY	MARB	YG	CW	REA	FAT
134	84	50	17	-5.4	61	92	0.2	23	8	11	12	21	0.64	0.05	26	0.28	0.03
3%	10%	14%	4%	4%	39%	50%	63%	67%	80%	43%	1%	6%	7%	38%	27%	13%	71%

123F has been bred to be calve in the Fall. Bred to Kaw 076 (lot 17 in sale) She should calve between 8/15 and 9/30. Originally from Bieber Red Angus she is top10% in the breed in five major categories. Her bull calf is also lot 25 on the sale and speaks for itself. Only letting her go due to her aborting her spring calf and we turned her into a fall.

94 ECCO 915G

REG: 4188256 / DOB: 3/31/19 / TAT: 915G / BREED: 100% AR / Fall Calving Bred

LJC MERLIN T179
WFL MERLIN 018A
 WFL COMMITMENT 042Y

LJC MISSION STATEMENT P27
 BUF CRK REDPRIDE N179
 BROWN COMMITMENT S7206
 WFL JEWELMAKER 9024

ALRA REDEMPTION 453
ECCO SAKIC REDEMPTION 618D
 AMBERLIGHT SAKETTE 245

BROWN JYJ REDEMPTION Y1334
 AMBERLIGHT SAK 146
 RED SIX MILE SAKIC 832S
 AMBERLIGHT MAJOR FANTASY 710

ProS	HB	GM	CED	BW	WW	YW	ADG	MILK	ME	HPG	CEM	STAY	MARB	YG	CW	REA	FAT
59	29	30	15	-4.4	74	116	0.26	33	6	9	8	12	0.33	0	25	0.21	0
87%	89%	50%	13%	9%	74%	8%	17%	7%	70%	74%	26%	92%	61%	17%	29%	21%	13%

ECCO 915G is an outstanding Merlin daughter with a great pedigree. She is top 10% in YW and WW. She is also only a 2019 model so coming her second calf. She was bred to SRN Alistar Reg 4457367 and should calve between 8/1 and 9/15. The EPDs on this calf will be impressive.

96 SRA REDEMPTION 0518

REG: 4292117 / DOB: 2/7/20 / TAT: 0518 / BREED: 100% AR / Spring Calving Bred

BECKTON NEBULA P P707
BROWN JYJ REDEMPTION Y1334
 JYJ MS JOLENE W16

BECKTON NEBULA M045
 BECKTON LANA M809 EP
 LJC MISSION STATEMENT P27
 HXC JOLENE R548

SANDERSON KING ROLLO 22V
LMG MISS VERDALE 5518
 LUCHT VERDALE 53

5L NORSEMAN KING 2291
 BIEBER FLOWER 9710
 LUCHT ROMEO R052
 LUCHT VERDALE R06

ProS	HB	GM	CED	BW	WW	YW	ADG	MILK	ME	HPG	CEM	STAY	MARB	YG	CW	REA	FAT
109	60	49	15	-4.3	57	98	0.26	25	6	11	9	17	0.49	0.08	25	0.07	0.01
20%	35%	23%	20%	11%	62%	46%	28%	55%	67%	49%	18%	33%	30%	58%	40%	62%	36%

SRA REDEMPTION 0518 is an outstanding Redemption heifer out of one of our best cows. She is bred to Andras Liberty F176 419746 and should calve before May 1. We are only parting with her because she fell outside our calving window.

97 SRA RED FUSION 0831

REG: 4260469 / DOB: 1/17/20 / TAT: 0831 / BREED: 100% AR / Spring Calving Bred

ANDRAS IN FOCUS B175
ANDRAS FUSION R236
 ANDRAS BELLE B167

MYTTY IN FOCUS
 DI ESTONIA 316
 ANDRAS THUNDER B105
 ANDRAS BELLE 416
 BECKTON NEBULA P P707
 JYJ MS JOLENE W16
 ANDRAS NEW DIRECTION R240
 JAG LANA 815U

BROWN JYJ REDEMPTION Y1334
SRA REDEMPTION 8101
 SCHWEITZER 1602

ProS	HB	GM	CED	BW	VW	YW	ADG	MILK	ME	HPG	CEM	STAY	MARB	YG	CW	REA	FAT
119	57	62	16	-5.2	51	90	0.24	24	3	8	9	17	0.65	0.09	28	-0.02	0
10%	41%	7%	11%	5%	79%	64%	39%	58%	47%	91%	18%	28%	9%	68%	30%	81%	20%

SRA Red Fusion 0831 is another great heifer bred to Andras Liberty F176. Her pedigree goes back to some of the top sires in the breed. Her expected calving date is before May 1.

Consigned by NICHOLAS WANETKA

99 LMG MISS VERDALE 5518

REG: 3523368 / DOB: 4/4/15 / TAT: 5518 / BREED: 100% AR / Spring Calving Bred

5L NORSEMAN KING 2291
SANDERSON KING ROLLO 22V
 BIEBER FLOWER 9710

VGW KING OF THE WEST
 NORSEMAN 1312 PJM
 JHE CANYON HAWK 1062
 BIEBER FLOWER 7553
 BUF CRK ROMEO L081
 BJR MS STONY 4X-516
 GMRA VERMILLION 796
 FEDDES VRDALE 223

LUCHT ROMEO R052
LUCHT VERDALE 53
 LUCHT VERDALE R06

ProS	HB	GM	CED	BW	VW	YW	ADG	MILK	ME	HPG	CEM	STAY	MARB	YG	CW	REA	FAT
92	58	34	13	-2.3	50	84	0.21	25	4	9	9	17	0.31	0.01	17	0.16	0.01
41%	47%	39%	39%	35%	78%	69%	52%	52%	60%	77%	17%	41%	66%	22%	60%	30%	39%

Another great cow that has produced a lot of bull for us. She is just to far back in the calving cycle. She is bred to Alistar - Reg 4457367. She should have her calf before May 1.

102 TBS SENSATION 667

REG: 3568652 / DOB: 4/12/16 / TAT: 667 / BREED: 100% AR / Spring Calving Bred

PRESSERS COVENANT 2056
PRESSER'S COVENANT 4037
 PRESSER'S ANNETTE 5020

BADLANDS LOADED 19T
 PRESSER'S MS MEGAN
 G A R PRIME DESIGN
 PRESSER'S ANNETTE 909
 BASIN SENSATION 702E
 BON VIEW GAMMER 2409
 FORSTER COPPERTOP 089
 TBS MS BRENNER 99

3SCC SENSATION R289
TBS MS CO SENSATION 799
 TBS MS COPPERTOP 399

ProS	HB	GM	CED	BW	VW	YW	ADG	MILK	ME	HPG	CEM	STAY	MARB	YG	CW	REA	FAT
86	61	25	10	0.4	51	82	0.19	19	8	10	6	19	0.29	0.04	18	0.04	0
51%	42%	60%	79%	83%	77%	73%	64%	87%	79%	58%	71%	18%	71%	35%	54%	56%	23%

2016 model bred to 3962145 Weber Reform - will be a Spring calver.

104 TBS FLAME HOBI 642

REG: 3568816 / DOB: 5/5/16 / TAT: 642 / BREED: 100% AR / Spring Calving Bred

FORSTER HOBO X001
TBS HOBO PRINCE 3360
 TBS MS PRINCE 527

FORSTER HOBO 6130
 FORSTER JOAN 806Z
 BHR PRINCE 335B
 FORSTER SAM-SAGE 900Z
 BECKTON NEBULA P P707
 BECKTON LANA R214 RA
 MESSER JUSTUS W060
 MOJO MULBERRY FLAME

BECKTON NEBULA Y253 03
LEWIS FLAME 304
 EURA FLAME 904-117Y

ProS	HB	GM	CED	BW	VW	YW	ADG	MILK	ME	HPG	CEM	STAY	MARB	YG	CW	REA	FAT
79	58	21	14	-3.3	56	90	0.21	28	3	10	6	18	0.29	0.08	18	-0.01	0.01
62%	47%	68%	28%	20%	58%	55%	51%	27%	59%	71%	71%	28%	71%	56%	54%	67%	42%

2016 model bred to 3962145 Weber Reform - will be a Spring calver.

98 SRA PROFIT LUCY 7519

REG: 4094460 / DOB: 1/21/19 / TAT: 9519A / BREED: 100% AR / Spring Calving Bred

LSF TAKEOVER 9943W
H2R PROFITBUILDER B403
 BROWN MS P707 Y6674

HXC CONQUEST 4405P
 LSF WIDELOAD R5014 U8061
 BECKTON NEBULA P P707
 BROWN MS MISSION STMT T6963
 BROWN PREMIER X7876
 SRR VICTORIA JOAN 277-675
 LMG GILLS INDEED 1603
 LUCHT TINA 996

LSF SRR FOREMOST 5314C
AJS 7519
 LMG MISS TINA 55199

ProS	HB	GM	CED	BW	VW	YW	ADG	MILK	ME	HPG	CEM	STAY	MARB	YG	CW	REA	FAT
87	24	63	10	-2.1	67	113	0.29	26	8	12	7	11	0.67	0.14	31	0.07	0.03
49%	93%	4%	73%	39%	17%	11%	8%	45%	82%	37%	57%	94%	6%	86%	14%	49%	75%

SRA Profit Lucy is a Profitbuilder daughter. She is only a three-year-old and just fell out of our calving window. She is bred to Kaw Ragnar 527 and should produce a high performing calf. Her YW and ADG gain is top 10% in the breed. She will have a late May to summer calf.

100 GWR NE LADY 610

REG: 3545618 / DOB: 3/7/16 / TAT: 610 / BREED: 100% AR / Spring Calving Bred

JAG DESIGN 108Y
JAG DESIGN 331A
 JAG LANA 815U

5L DOUBLE DESIGN 1177-227W
 JAG JULIE 820U
 BASIN CHEROKEE 2926
 JAG LANA 613S
 LCHMN NO EQUAL 1174D
 MSJ-RROBINHOOD-444-1031
 BASIN HOBO 215D
 SOR SHSTA LDY LR 9535J

JAG NO EQUAL 5807R
GWR NE LADY 019
 JAG SHSTALDY BH 1603L

ProS	HB	GM	CED	BW	VW	YW	ADG	MILK	ME	HPG	CEM	STAY	MARB	YG	CW	REA	FAT
69	70	-1	9	-0.3	63	93	0.19	28	8	11	3	21	0.16	0.01	13	0.03	0
76%	25%	97%	84%	72%	31%	47%	67%	28%	78%	42%	96%	5%	95%	20%	73%	58%	13%

GWR 610 another colid cow bred to Alistar - Reg 4457367. She would have had an outstanding bull on the sale this year but he was plagued by injury. This cow may have a calf on the ground by sale time.

103 TBS DAISY 629

REG: 3568736 / DOB: 4/24/16 / TAT: 629 / BREED: 100% AR / Spring Calving Bred

VGW BASES LOADED 166
BHR BASES LOADED 389
 MISS BHR CHAPTER ONE 743

VGW BASES LOADED 905
 VGW R667-DORA 0813
 LCC NEW CHAPTER A705L
 MISS BHR RAMBO 915
 FCC HIGH CHIEF 448
 RED DINA 6337
 BJR MAKE MY DAY 981
 WBAR DAISY 56

RED CHIEF 9527
TBS CHIEF DAISY 202
 TBS MS DAY MAKER 0856

ProS	HB	GM	CED	BW	VW	YW	ADG	MILK	ME	HPG	CEM	STAY	MARB	YG	CW	REA	FAT
104	83	21	10	-0.5	45	71	0.16	25	1	13	6	21	0.3	0.02	12	-0.01	0
24%	10%	70%	80%	69%	90%	88%	83%	53%	37%	26%	69%	8%	69%	24%	76%	67%	13%

2016 model bred to 3962145 Weber Reform - will be a Spring calver.



SRA

SCHWEITZER RED ANGUS

2325 A Street Road
Milford, NE 68045



ANNUAL BULL AND HEIFER SALE

MARCH 19

PLEASANT DALE, NE | 1:00 PM